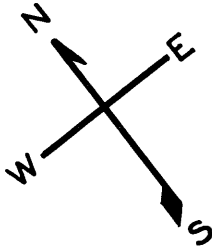


4591A

SHEET 1

REVISED '62
REVISED '79
" '81
" '82
" '85
" '88
" '89



BAY OF SAN FRANCISCO

INDIA BASIN

BULK HEAD LINE

HUNTERS POINT
NAVAL DRY DOCKS

PIER HEAD LINE

WATER FRONT LINE

10

UNITED STATES OF AMERICA

LOT 11 (SHT. 2) INTO 13/75

LOT 12 S.F.R.A. (SHT. 2)

S.W. KIRKWOOD AVE.

'82
4591B
1/100

9

SEE SHEET 2

McKINNON

GRIFFITH

N.E. PALOU AVE.

2
REGENTS U.C.
TIE
S 66° 26' 31" E
83,208

7483.89

BANCROFT

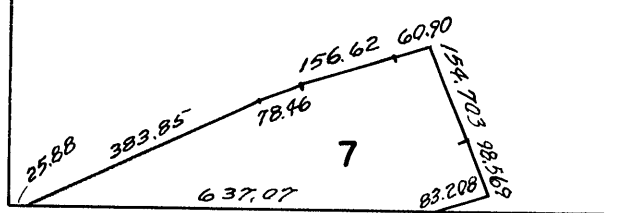
AVE.

GRIFFITH ST.

PALOU

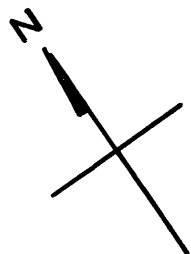
AVE.

DETAIL LOT 7 SCALE: 1" = 300'



SCALE: 1" = 600'

SAN MATEO COUNTY

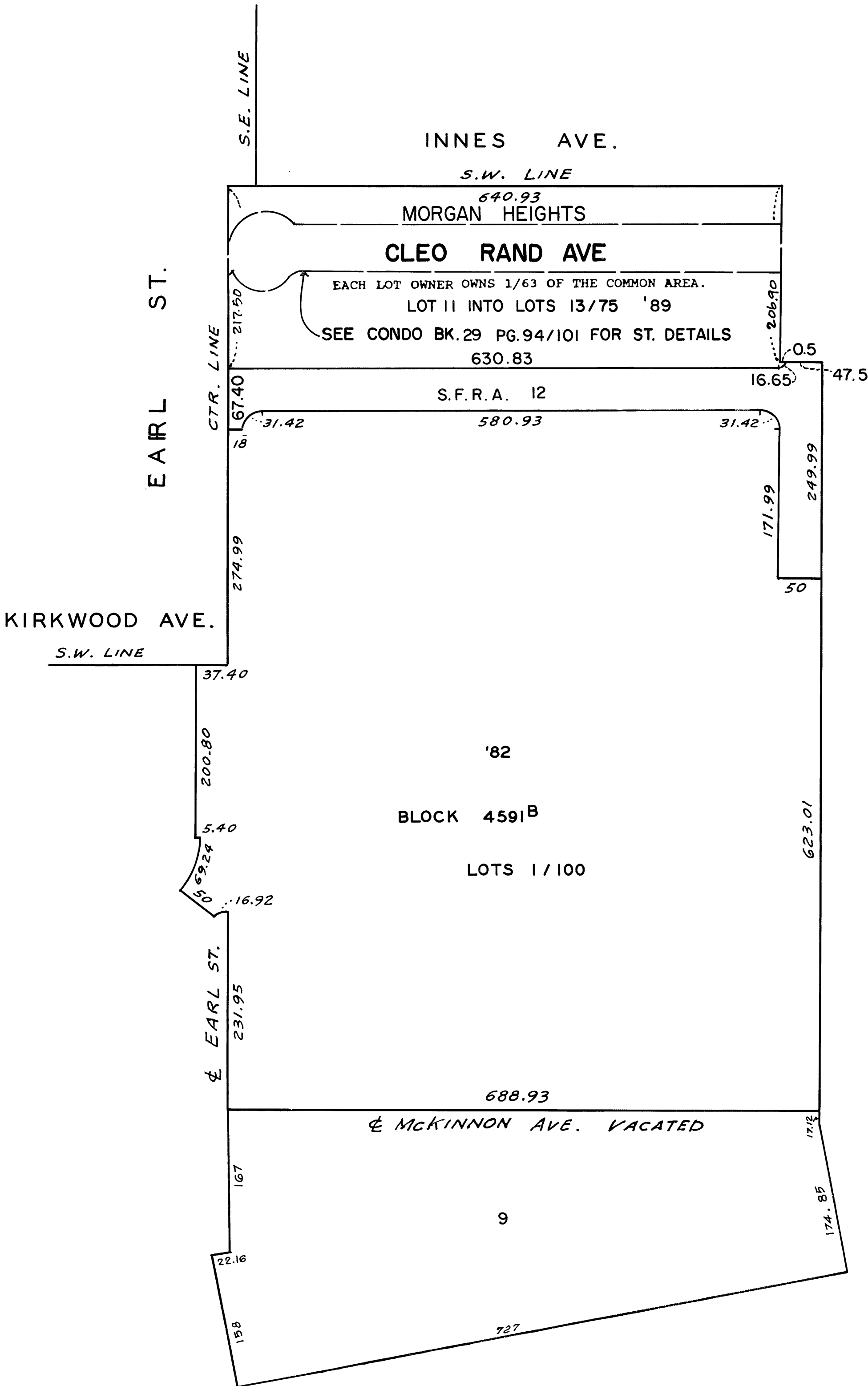


4591A

SHEET 2

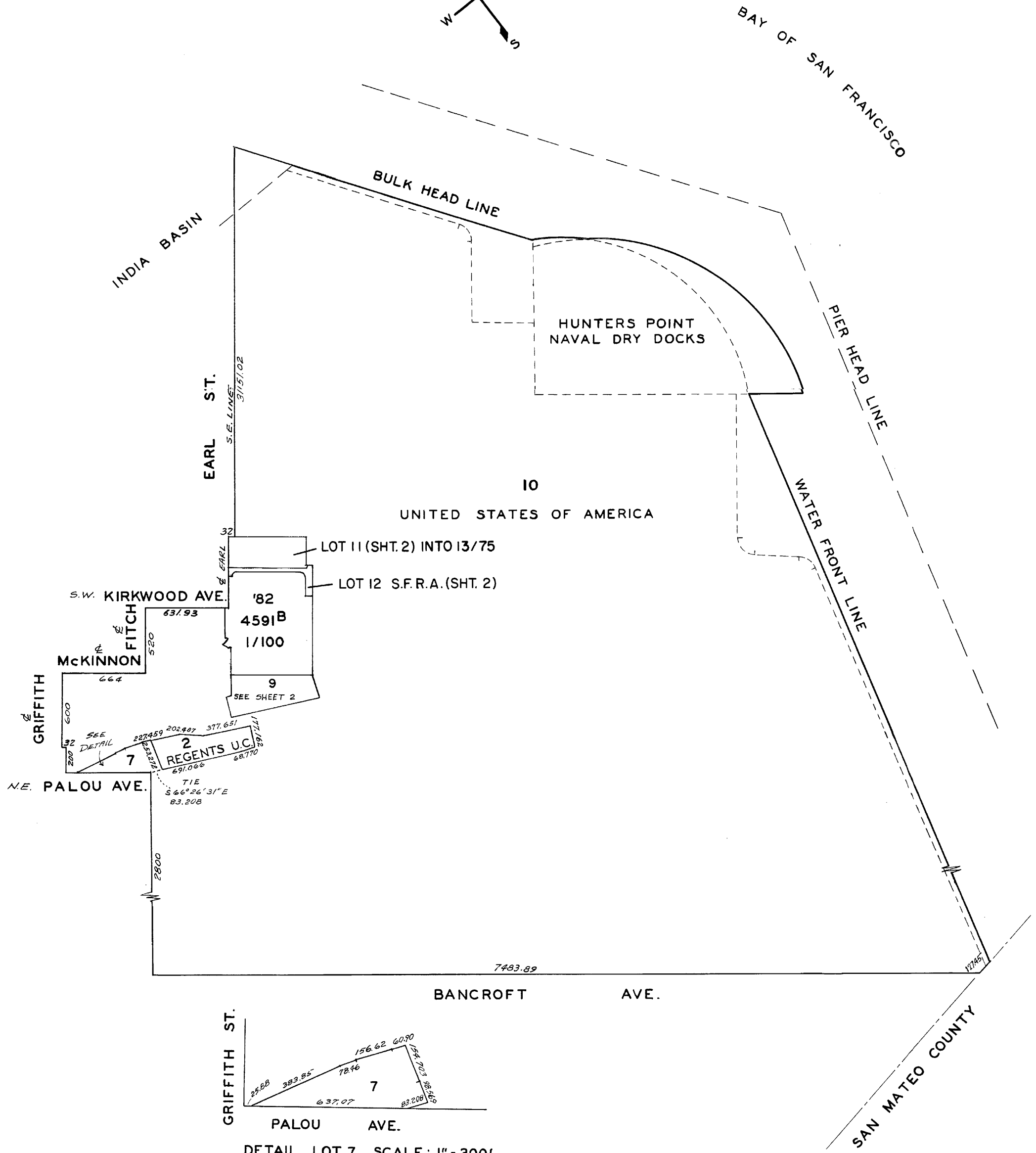
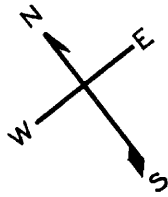
SCALE : 1 IN. = 100 FT.

REVISED 1982
" '85
" '88
" '89



© COPYRIGHT SAN FRANCISCO
CITY & COUNTY ASSESSOR 1995

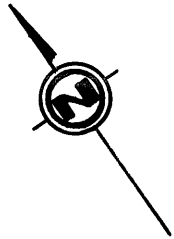
4591A
SHEET 1
REVISED '62
REVISED '79
" '81
" '82
" '85
" '88
" '89



SCALE: 1" = 600'

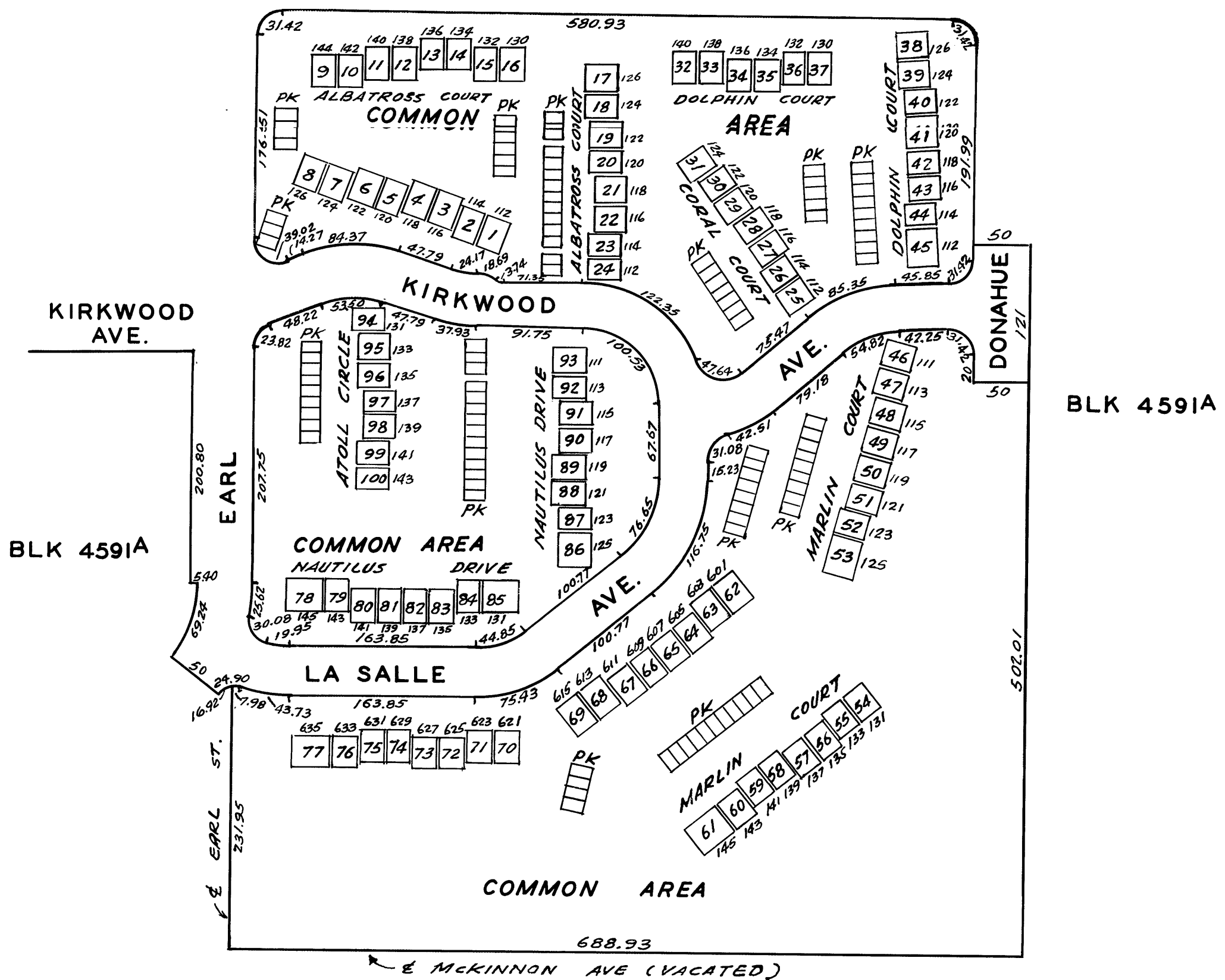
INCHON VILLAGE

A CONDOMINIUM PROJECT



SCALE: 1"=100'

BLK 459IA



NOTE: LOT & UNIT NOS. ARE THE SAME.
PK'S ARE TYPICAL PARKING STALLS.
LOTS 1 / 100 1982.
THE NUMBERS AT THE SIDES OF THE LOTS
ARE THE STREET ADDRESSES.

BLK 459IA

RECORDED 6/26/81
CONDO BOOK '17' PGS 112/130

NEW BLOCK SEPT. 1981