

LOTS MERGED
1/5 INTO 8 1983

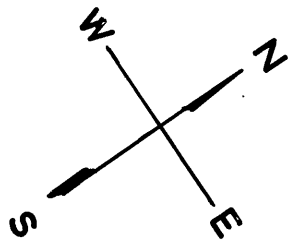
© COPYRIGHT SAN FRANCISCO
CITY & COUNTY ASSESSOR 1995

SHEET 1

4712

NEW HUNTERS POINT
COMMUNITY UNIT 6

REVISED 1983
" "



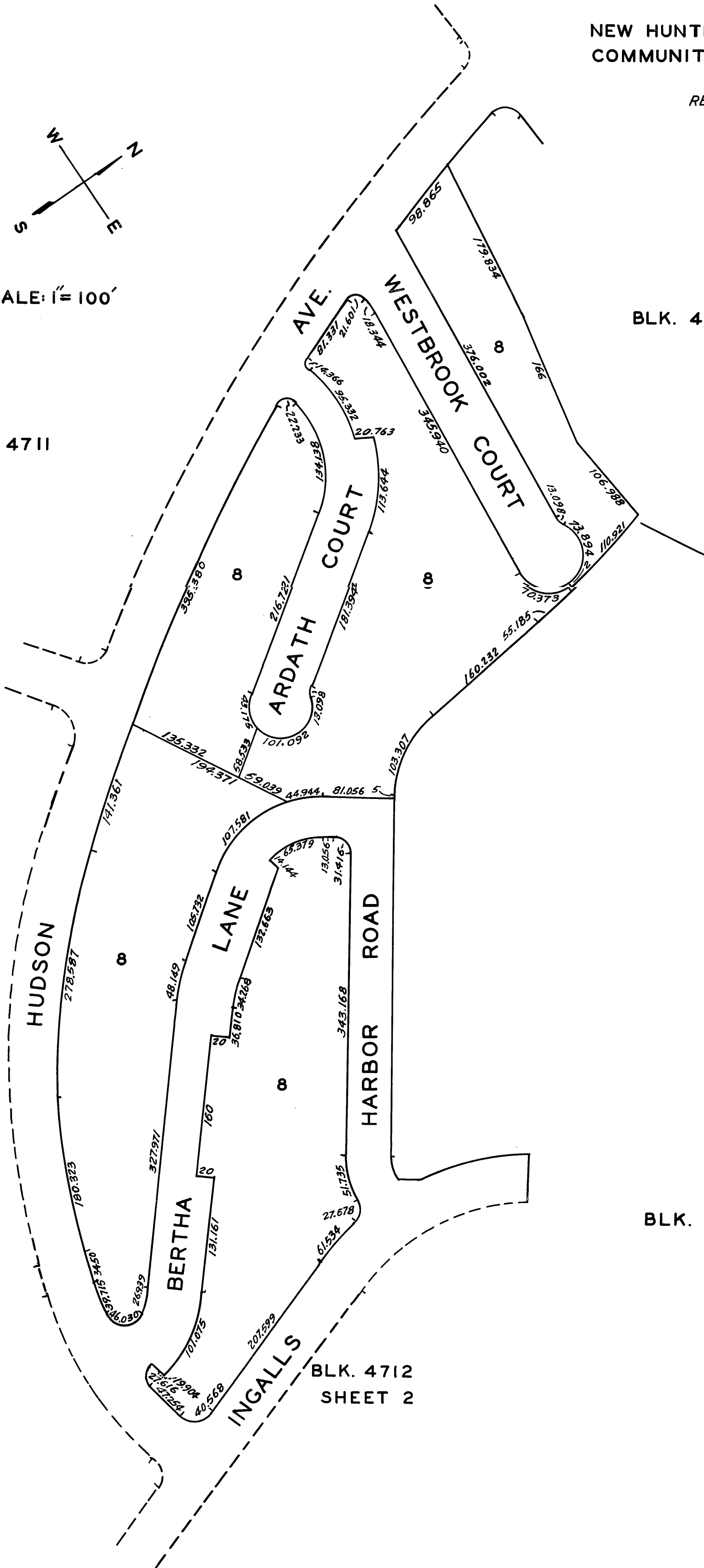
SCALE: 1" = 100'

BLK. 4711

BLK. 4720

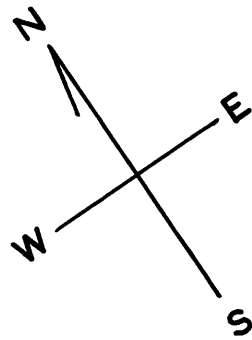
BLK. 4713

BLK. 4700



BLK. 4712
SHEET 2

REVISED 1983



SCALE : 1 IN. = 100 FT.

