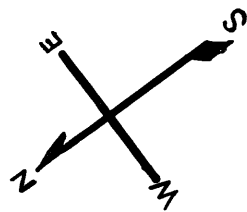


Lot 46 omitted '1942'

© COPYRIGHT SAN FRANCISCO  
CITY & COUNTY ASSESSOR 1995

LOTS MERGED  
Lot 25 into lots 23, 23 & 24 '1952'

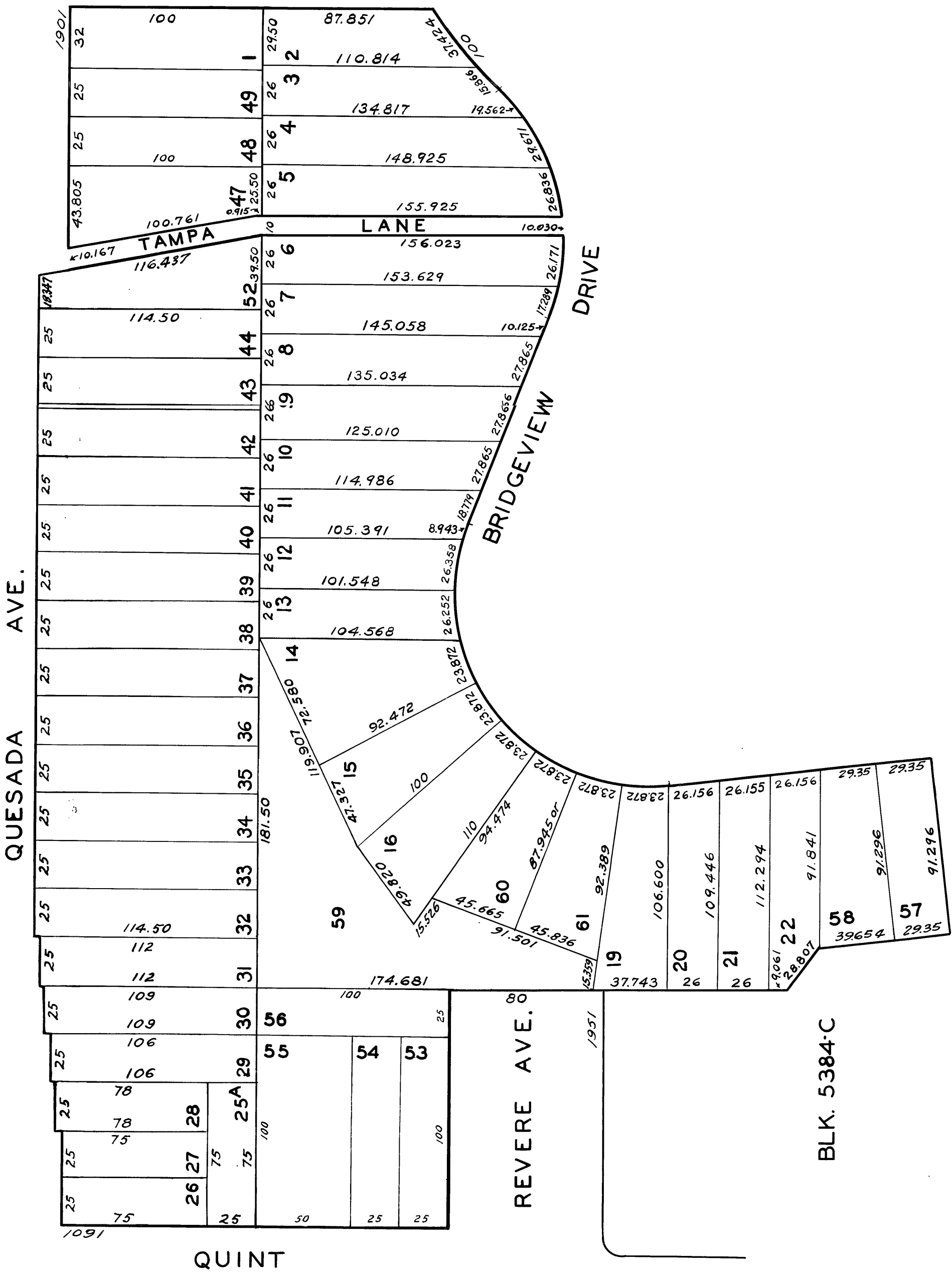
5336



ONEIL & HALEY TR BLK 345  
BRIDGEVIEW TERR.

REVISED '57  
REVISED '58  
REVISED '59  
REVISED '62  
REVISED '66

BLK. 5337



BLK. 5384-C