

5419

LOTS MERGED

```

LOT 1A INTO LOT 12B-1944
LOTS 8A 9A-10 " " 9 - "48
LOTS 3A 3B-12C " " 4 - "49
LOT B " " 6 - "53

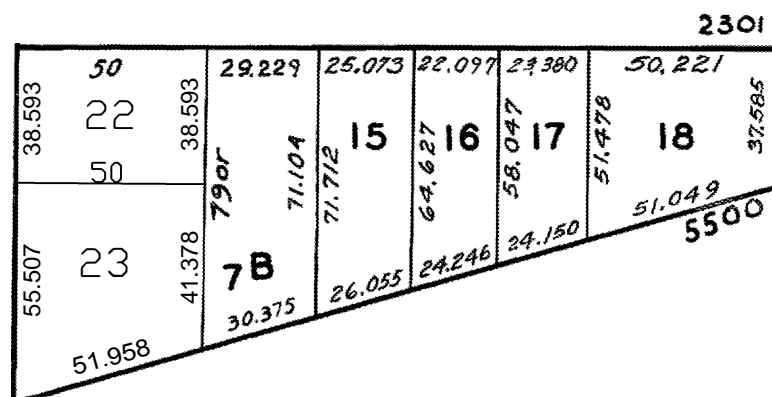
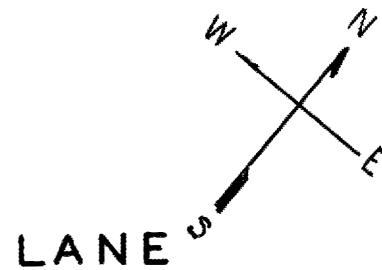
lot1 into lots19/21 for 2002 roll
lots7&7C into lots2&23 for 2003 roll

```

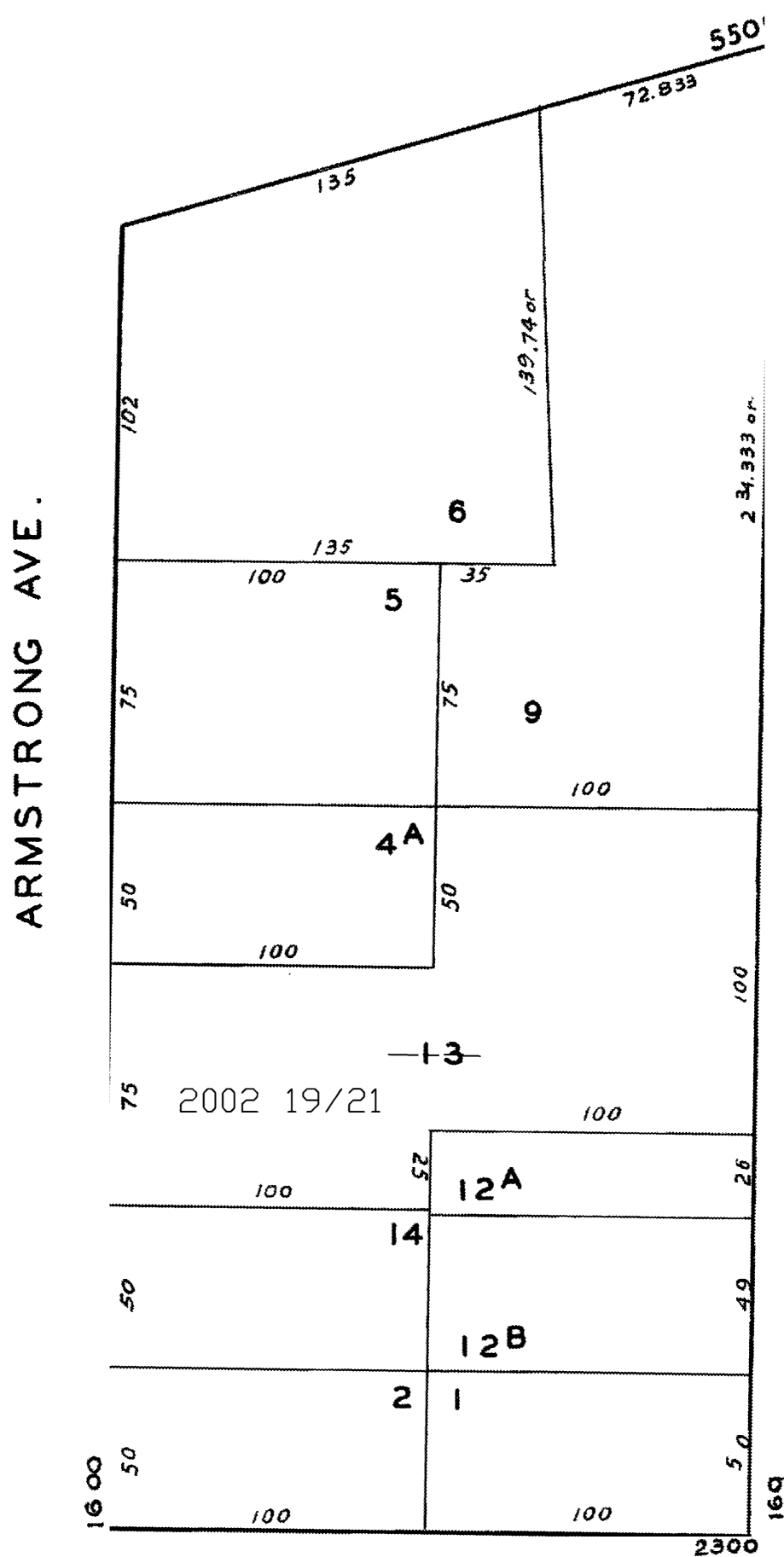
**© COPYRIGHT SAN FRANCISCO
CITY & COUNTY ASSESSOR 1995**

SO. SF HD & RR ASS'N
BAY VIEW HD ASS'N
BLK. 468

REVISED '58
" '66
" '77
 Revised 2002
 Revised 2003



3RD



1620 ARMSTRONG AVE.		
A CONDOMINIUM		
<u>LOT</u>	<u>UNIT</u>	<u>% COMM. AREA</u>
19	1	28.72
20	2	38.77
21	3	32.51

KEITH