

LOTS MERGED

LOTS	INTO LOT	
I ^H	I ^A	1922
I ^C	I ^N	1945
I ^I	OMITTED	1951
I ^D	I ^A , I ^F	1952
I ^E	I, I ^N , I ^M , I ^U , I ^V	1957

LOT I^V FORMERLY LOT 1-BIK. 5456
 LOT I^Q MERGED INTO LOT 6^B-BIK. 5458
 LOT I^X ASSESSED AS PTN. OF LOT 6-BIK. 5458

© COPYRIGHT SAN FRANCISCO
 CITY & COUNTY ASSESSOR 1995

5431A

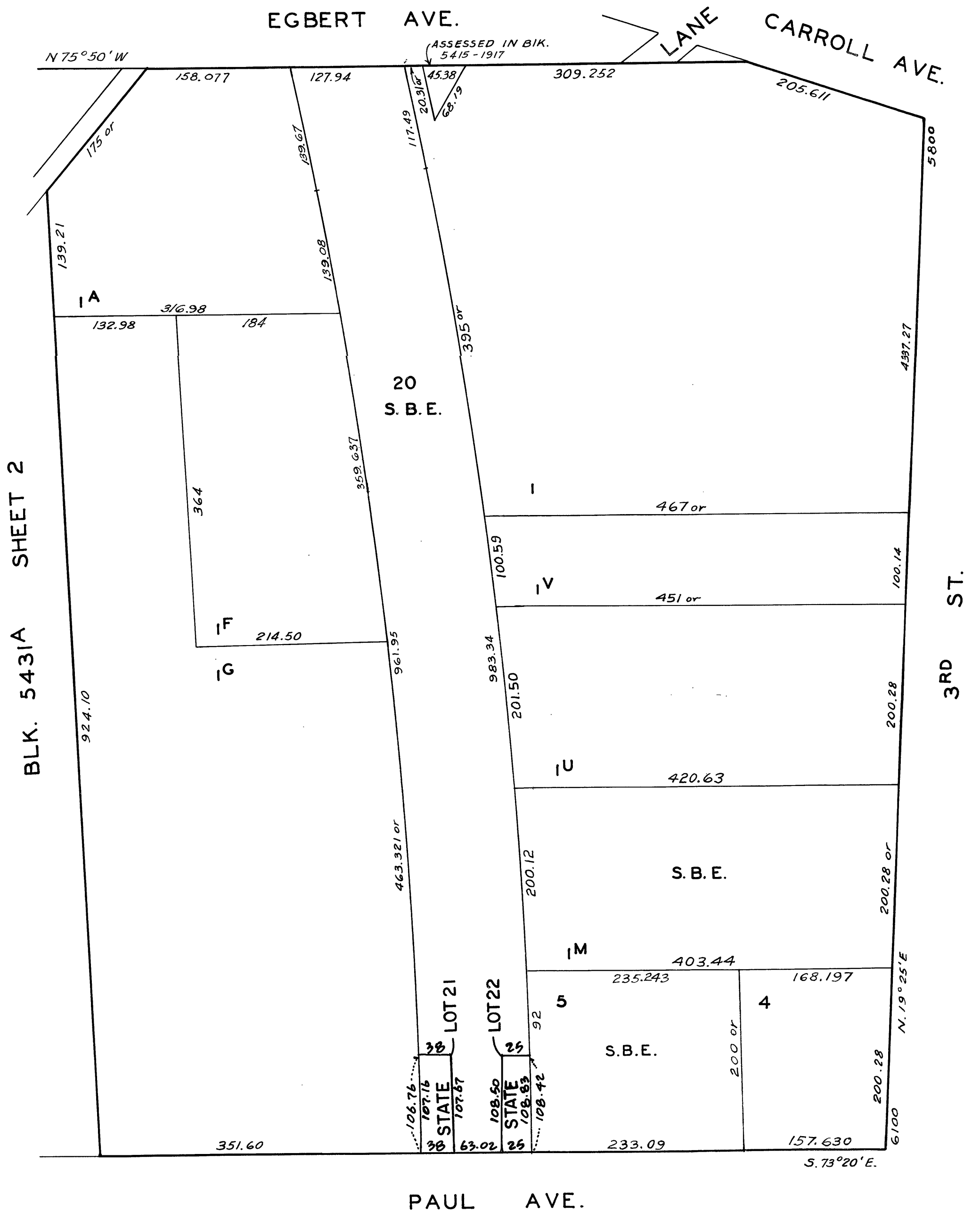
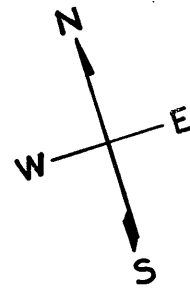
SHEET 1

SCALE 1" = 100'

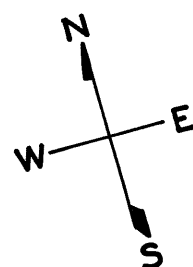
WEST'N PAC HARBOR TRACT

REVISED '58

" '90

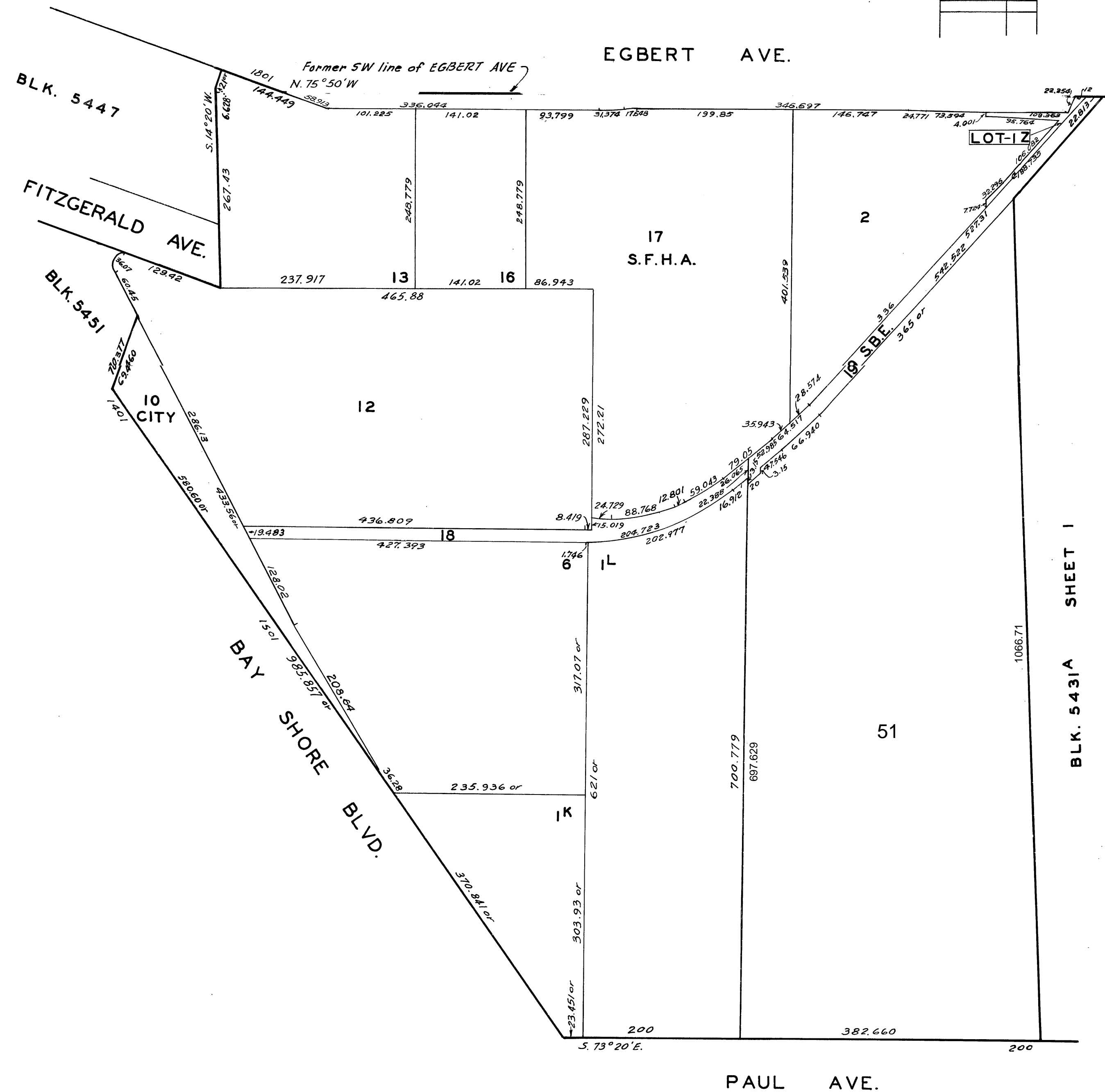


Lots 14 & 15 into lot 51 for 2016 roll



SCALE 1"=100'

REVISED	'56
3	'59
3	'60
3	'61
3	'67
"	'71
"	'72
"	'77
"	'82
REVISED	2016



LOTS	INTO LOT	
1H	1A	1922
1C	1N	1945
1I	OMITTED	1951
1D	1A, 1E	1952
1E	1, 1N, 1M, 1V, 1W	1957

LOT 1^Y FORMERLY LOT 1-BIK. 5456
LOT 1^Q MERGED INTO LOT 6^B-BIK. 5458
LOT 1^X ASSESSED AS PTN. OF LOT 6-BIK. 5458

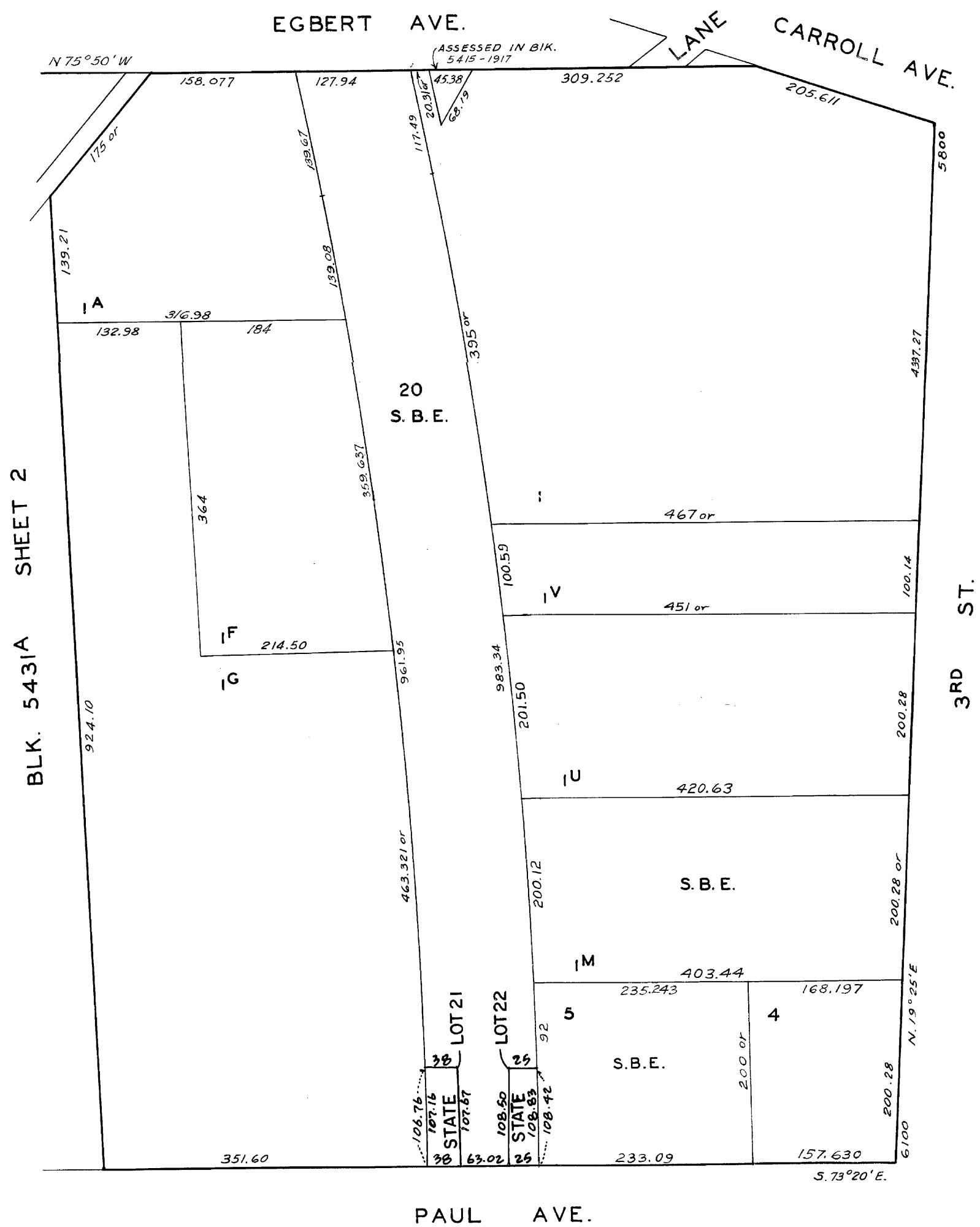
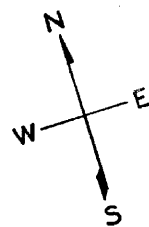
© COPYRIGHT SAN FRANCISCO
CITY & COUNTY ASSESSOR 1995

SHEET 1

SCALE 1" = 100'

WEST'N PAC HARBOR TRACT

REVISED '58
" '90



LOTS MERGED

LOTS	INTO LOT	
I ^H	I ^A	1922
I ^C	I ^N	1945
I ^I	OMITTED	1951
I ^D	I ^A , I ^F	1952
I ^E	I, I ^N , I ^M , I ^U , I ^V	1957

LOT I^V FORMERLY LOT 1-BIK. 5456
 LOT I^Q MERGED INTO LOT 6^B-BIK. 5458
 LOT I^X ASSESSED AS PTN. OF LOT 6-BIK. 5458

© COPYRIGHT SAN FRANCISCO
 CITY & COUNTY ASSESSOR 1995

5431A

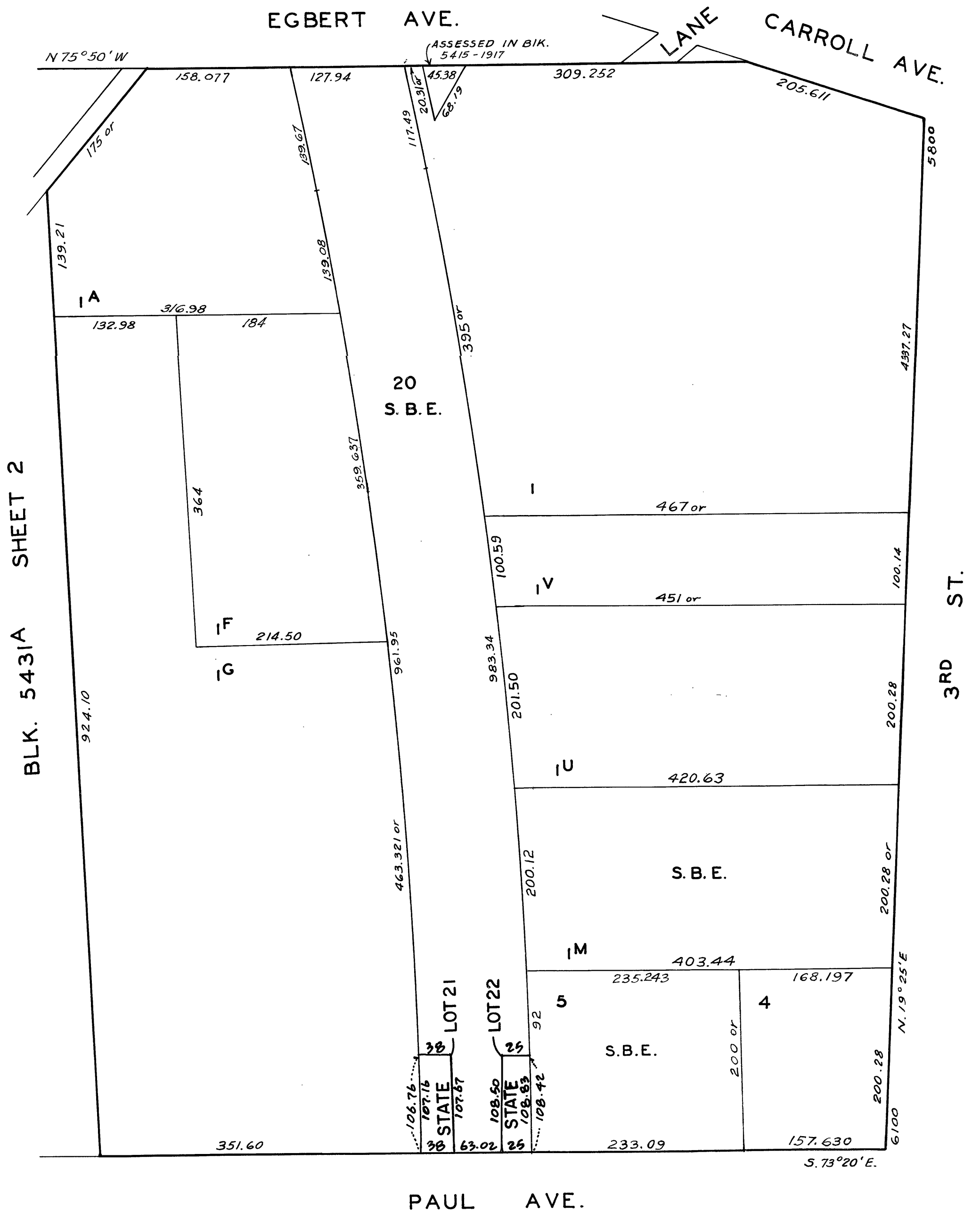
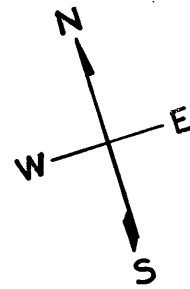
SHEET 1

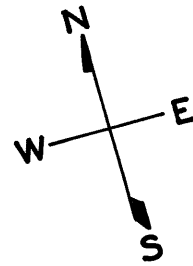
SCALE 1" = 100'

WEST'N PAC HARBOR TRACT

REVISED '58

" '90





REVISED	'58
3	'59
3	'60
3	'61
3	'67
"	'71
"	'72
"	'77
"	'82

