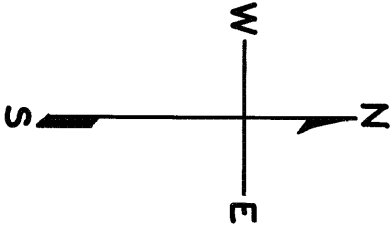


HOLLY PARK TRACT
BLK 6

lot45 into lots46&47 for 2000 roll
lot10 into lots48&49 for 2005 roll

Revised 2000
Revised 2005



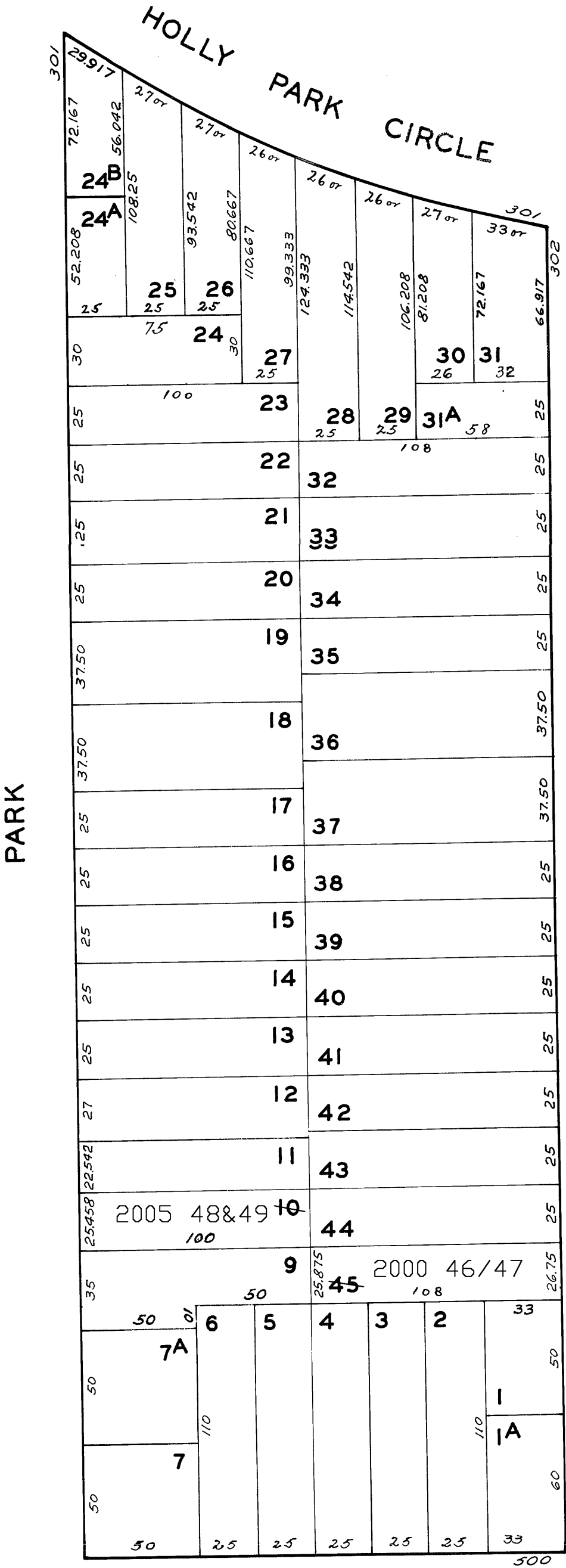
LOTS MERGED
LOTS 8-84 INTO LOT 9 1944

372-376 Highland Ave.
A CONDOMINIUM

LOT	UNIT	% COMM.	AREA
46	372	50	
47	376	50	

377-379 PARK ST.
A CONDOMINIUM

LOT	UNIT	% COMM.	AREA
48	377	40	
49	379	60	



ANDOVER