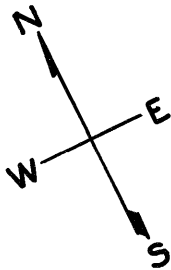
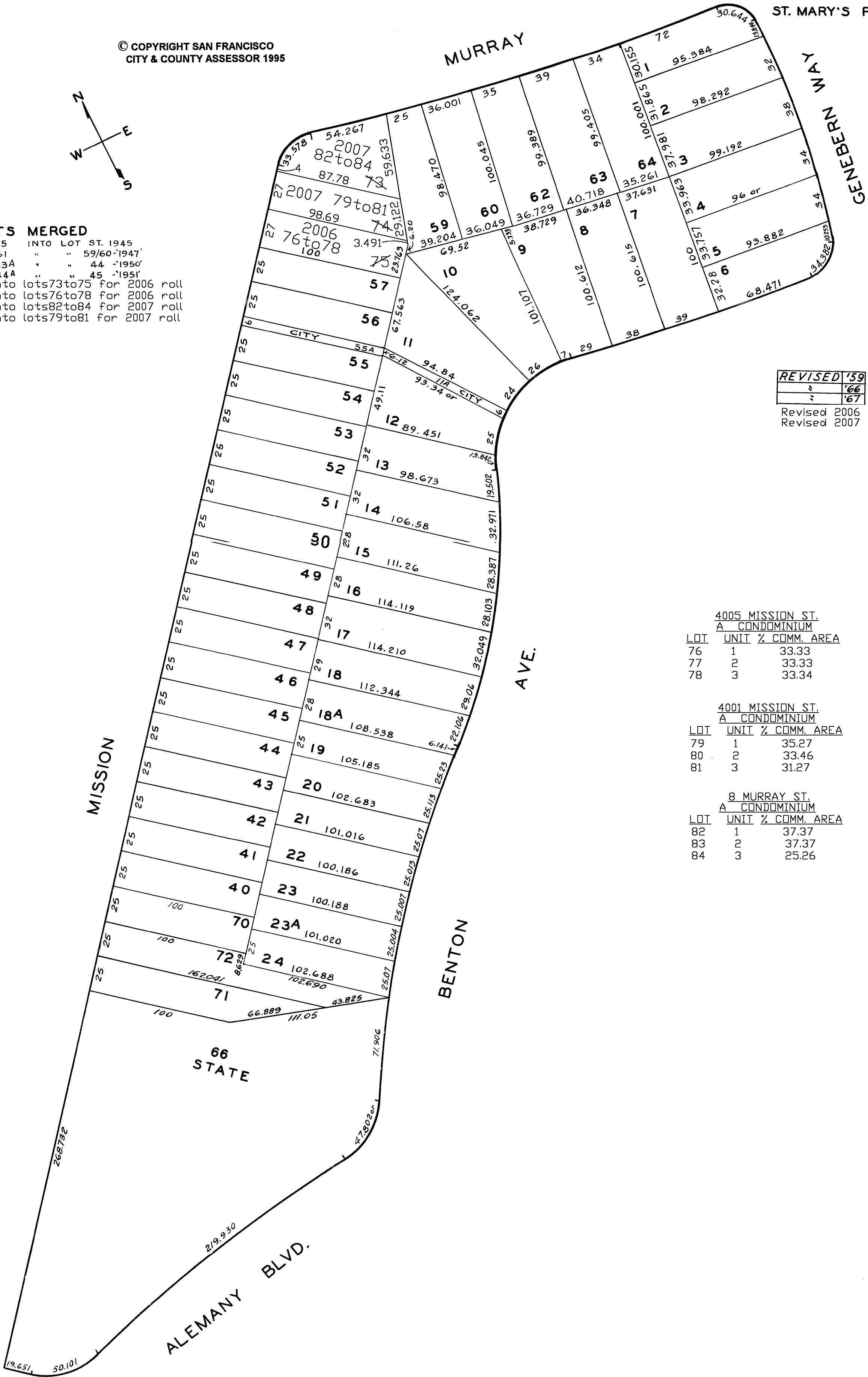


© COPYRIGHT SAN FRANCISCO  
CITY & COUNTY ASSESSOR 1995



LOTS MERGED

LOTS 65 INTO LOT ST. 1945  
" 61 " " 59/60-1947'  
" 43A " " 44 -1950'  
" 44A " " 45 -1951'  
lot58 into lots73to75 for 2006 roll  
lot75 into lots76to78 for 2006 roll  
lot73 into lots82to84 for 2007 roll  
lot74 into lots79to81 for 2007 roll



REVISED		'59
+		'66
-		'67
Revised 2006		
Revised 2007		

4005 MISSION ST. A CONDOMINIUM			
LOT	UNIT	% COMM.	AREA
76	1	33.33	
77	2	33.33	
78	3	33.34	

4001 MISSION ST. A CONDOMINIUM			
LOT	UNIT	% COMM.	AREA
79	1	35.27	
80	2	33.46	
81	3	31.27	

8 MURRAY ST. A CONDOMINIUM			
LOT	UNIT	% COMM.	AREA
82	1	37.37	
83	2	37.37	
84	3	25.26	