

7

6474

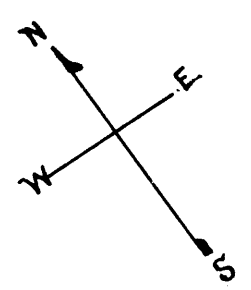
LOTS MERGED

Lots	28/30	Merged into	Lot	1	"19"
"	6/13/26	"	"	1	"50"
"	21	"	"	20	"50"
"	24/25	"	"	23	"50"
"	26	"	"	23	'54

WEST END HD ASSN LOTS 39 & 53

REVISED 1969
" '77

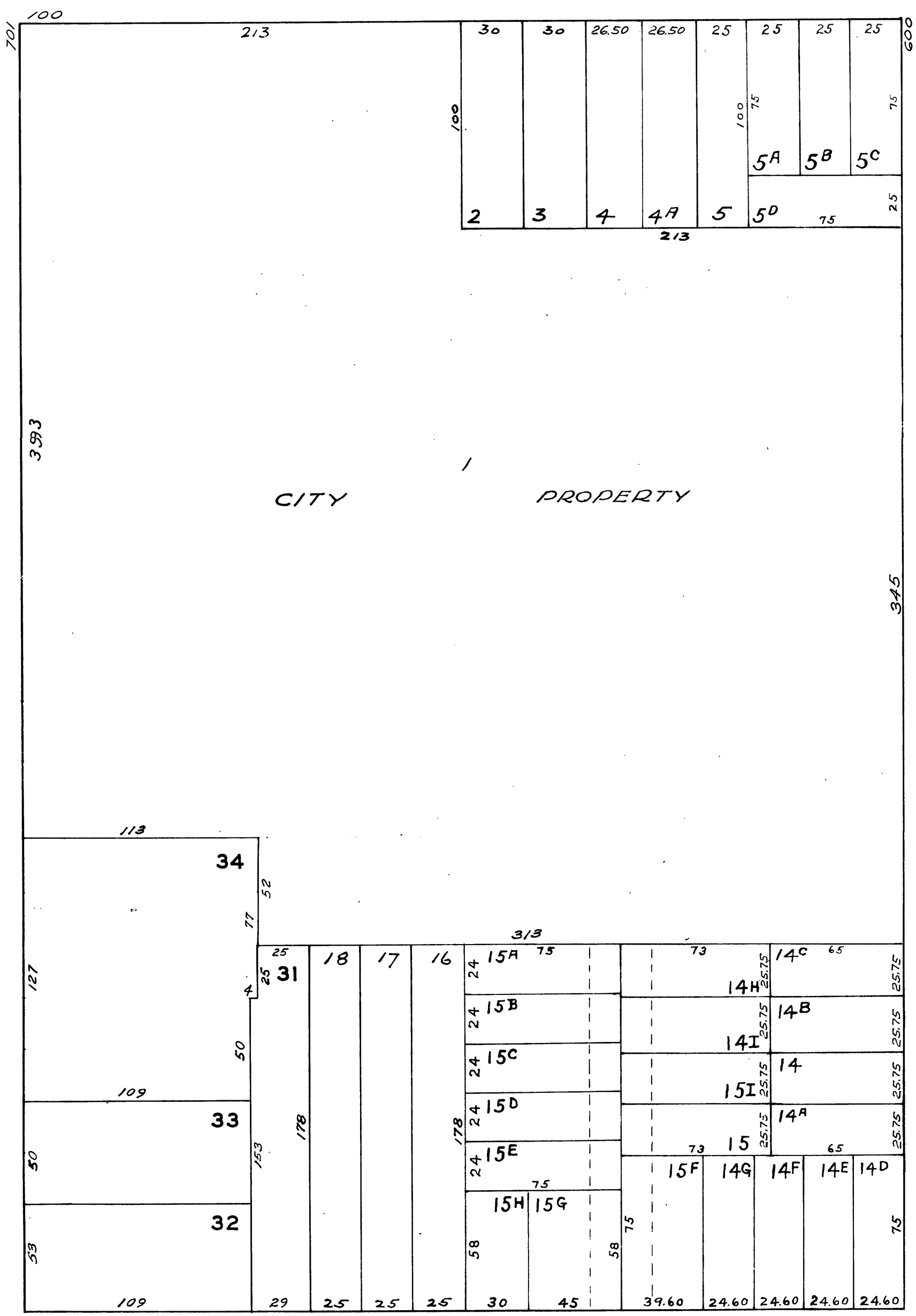
© COPYRIGHT SAN FRANCISCO
CITY & COUNTY ASSESSOR 1995



LOWELL

MORSE

BRUNSWICK



WHITTIER