

ASSESSOR-RECORDER'S OFFICE

© COPYRIGHT SAN FRANCISCO  
CITY & COUNTY ASSESSOR 1995

LOTS MERGED

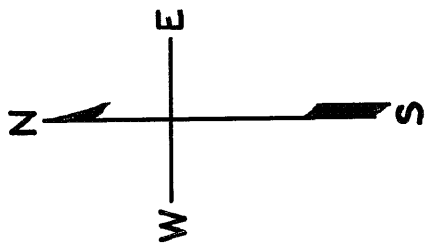
LOTS INTO LOT  
5 " 4 '1952'

lot40 into lots41&42 for 2001 roll

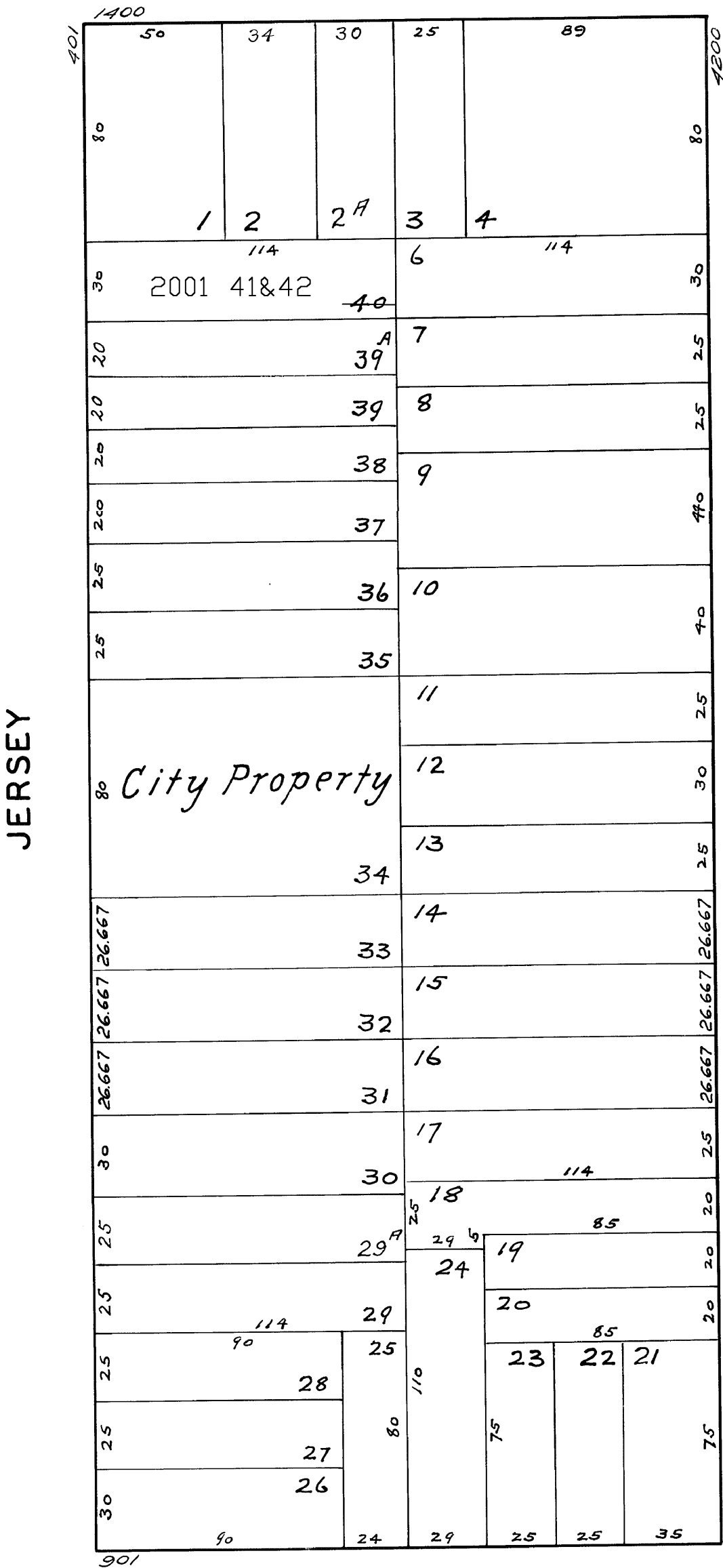
6539

HORNERS ADDN BLK 183

Revised 2001



CASTRO



|                    |      |         |       |
|--------------------|------|---------|-------|
| 409-411 JERSEY ST. |      |         |       |
| A CONDOMINIUM      |      |         |       |
| LOT                | UNIT | % COMM. | AREA  |
| 41                 | 409  |         | 49.00 |
| 42                 | 411  |         | 51.00 |

DIAMOND