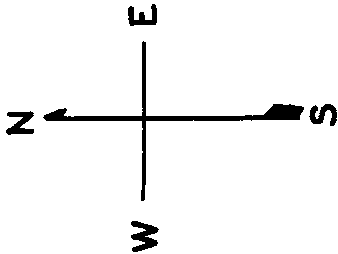


lot6B into lots51&52 for 1998 roll
lot6C into lots53&54 for 2001 roll
lot36 into lots55&56 for 2001 roll
lot26 into lots57/59 for 2005 roll
lot1 into lots60to63 for 2007 roll
lot27 into lots64/66 for 2010 roll
lot6 into lots75&76 for 2013 roll
Lot 22 into lots 77 to 79 for 2016 roll
Lot 4 into lots 71 to 74 for 2017 roll



6548

HORNER'S ADDN BLK. 131

REVISED '58
" '86

Revised 1998
Revised 2001
Revised 2005
Revised 2007
Revised 2010
Revised 2013
REVISED 2016
REVISED 2017

SANCHEZ

1210 SANCHEZ ST.
A CONDOMINIUM

LOT	UNIT	% COMM. AREA
60	1	25.12
61	2	24.88
62	3	25.12
63	4	24.88

1207-1211 NOE ST.
A CONDOMINIUM

LOT	UNIT	% COMM. AREA
57	1207	50
58	1209	25
59	1211	25

1240-1242 SANCHEZ ST.
A CONDOMINIUM

LOT	UNIT	% COMM. AREA
53	1240	53.00
54	1242	47.00

4051 25TH ST.
A CONDOMINIUM

LOT	UNIT	% COMM. AREA
55	1	45.20
56	2	54.80

260-208 CLIPPER ST.
A CONDOMINIUM

LOT	UNIT	% COMM. AREA
51	206	53
52	208	47

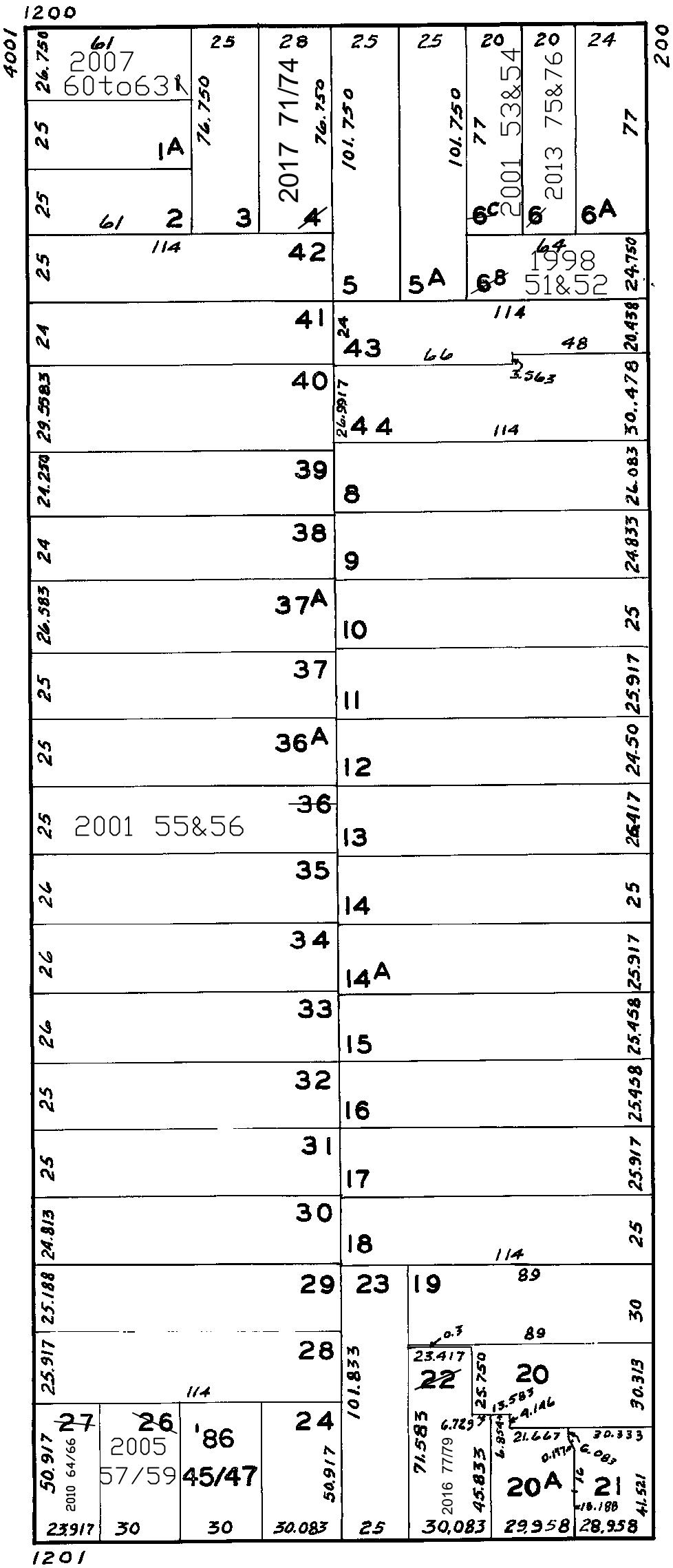
25TH

CLIPPER

1213 - 1215 - 1217 NOE STREET

A CONDOMINIUM

LOT	UNIT	%COMMON AREA
45	1213	33.33
46	1215	33.33
47	1217	33.34



NOE