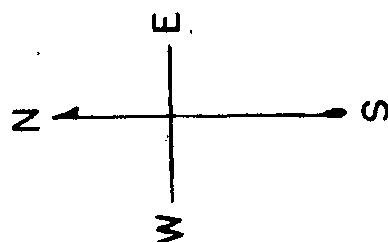


© COPYRIGHT SAN FRANCISCO
CITY & COUNTY ASSESSOR 1995

LOTS MERGED

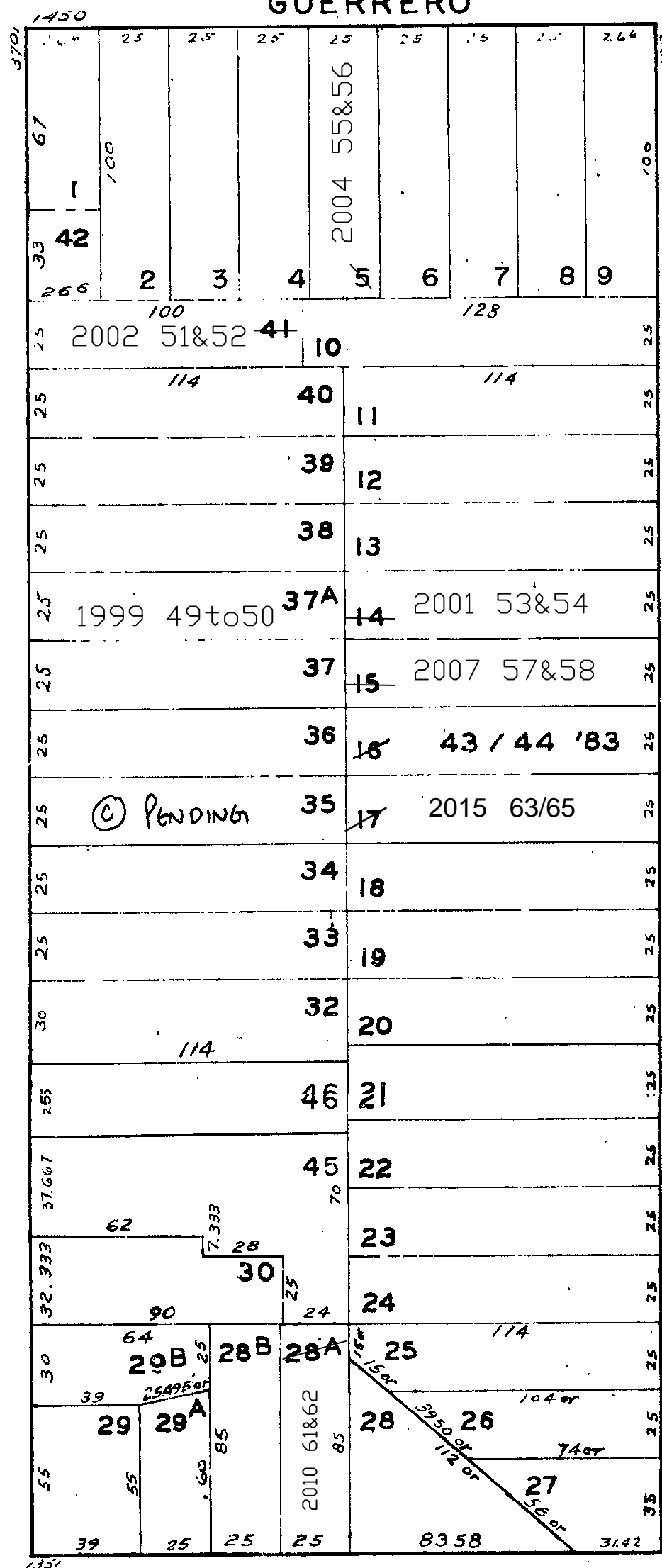
LOT 31 MERGED INTO 45 & 46 - 1985

lot37A into lots49to50 for 1999 roll
lot14 into lots53&54 for 2001 roll
lot41 into lots51&52 for 2002 roll
lot5 into lots55&56 for 2004 roll
lot15 into lots57&58 for 2007 roll
lot28A into lots61&62 for 2010 roll
Lot 17 into lots 63 to 65 for 2015 roll



GUERRERO

ARMY



DOLORES

6577

HORNER'S ADD
BLK 34

REVISED 1983
'85

Revised 1999
Revised 2001
Revised 2002
Revised 2004
Revised 2007
Revised 2010
REVISED 2015

1476-1478 GUERRERO ST.

A CONDOMINIUM

LOT	UNIT	% COMM. AREA
55	1476	40.9
56	1478	59.1

136-138 27TH ST.

A CONDOMINIUM

LOT	UNIT	% COMM. AREA
57	136	55.25
58	138	44.75

142-142A 27TH ST.

A CONDOMINIUM

LOT	UNIT	% COMM. AREA
43	1	50
44	2	50

132-134 27TH ST.

A CONDOMINIUM

LOT	UNIT	% COMM. AREA
53	132	52.80
54	134	47.20

3735-3737 CESAR CHAVEZ ST.

A CONDOMINIUM

LOT	UNIT	% COMM. AREA
49	3735	48
50	3737	52

3719-3721 CESAR CHAVEZ ST.

A CONDOMINIUM

LOT	UNIT	% COMM. AREA
51	3719	46.66
52	3721	53.34