

LOTS MERGED

LOT 13 INTO LOTS 12 & 14 -1930
" 24 " " 1-A-18-2 -1949

lot25 into lots 31&32 for 2003 roll

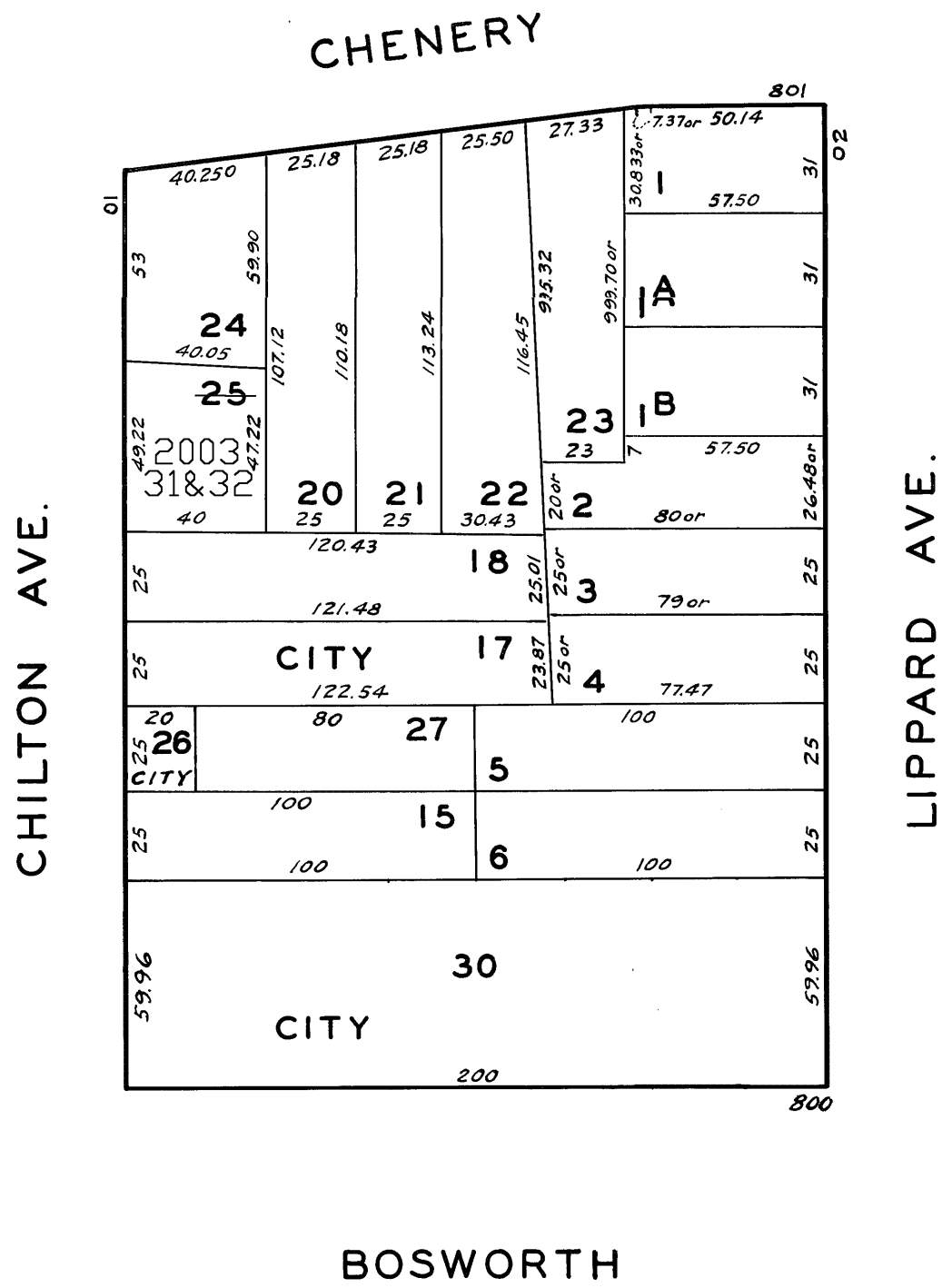
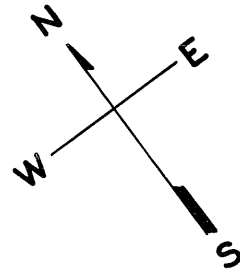
6738

MISSION & 30TH ST.
EXT'N HD UNION BLK.II

BLK. RENUMBERED '18

REVISED	'60
"	'66
"	'68
"	'70

Revised 2003



5-7 Chilton Ave.
A CONDOMINIUM

LOT	UNIT	% COMM. AREA
31	5	50
32	7	50