

6951

© COPYRIGHT SAN FRANCISCO
CITY & COUNTY ASSESSOR 1995

WEST END MAP I BLK 24

REVISED '58

REVISED '59

REVISED '60

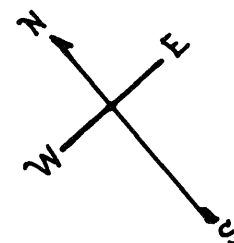
" '65

" '73

" '90

Revised 1999

Revised 2006



LOTS MERGED

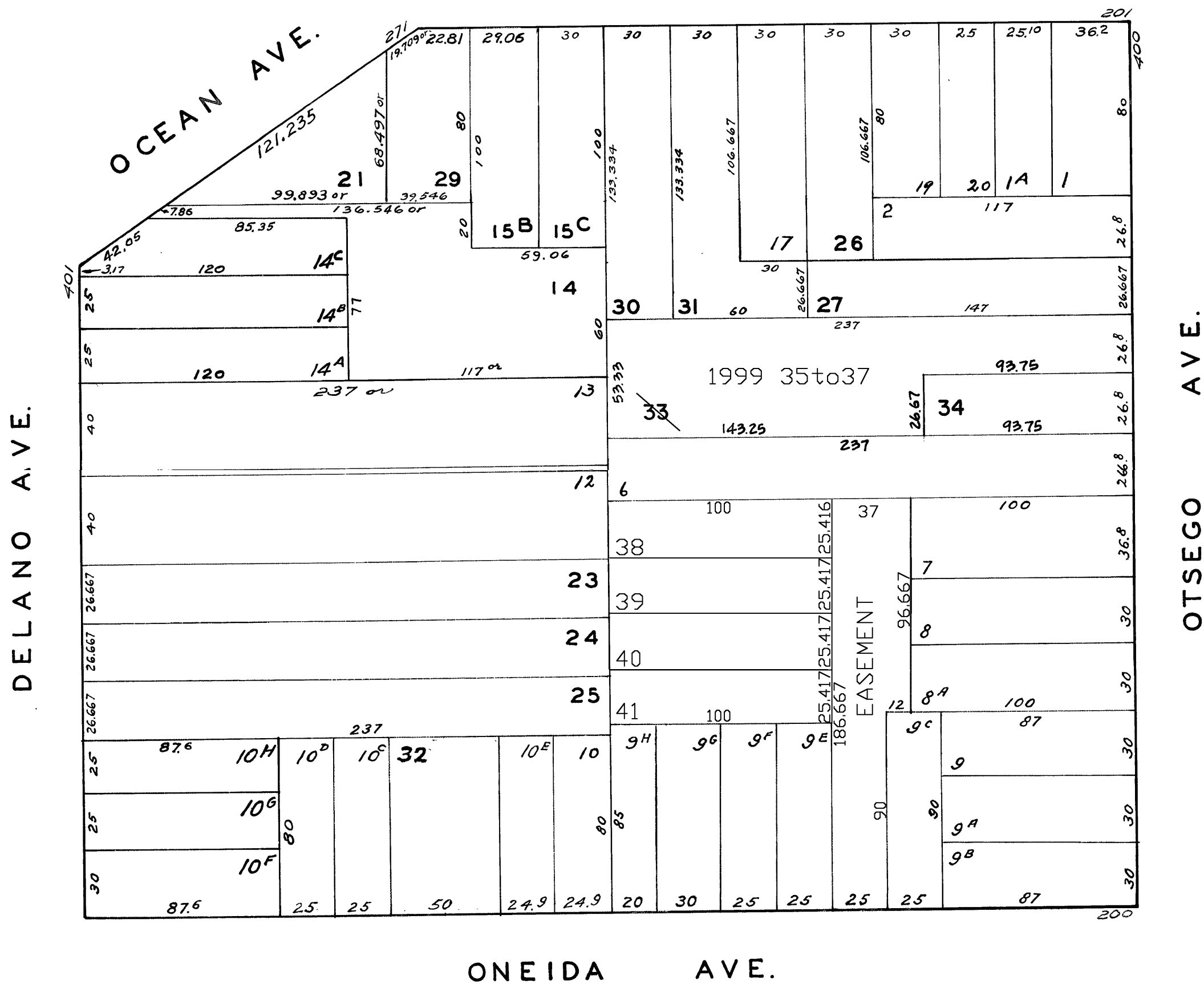
LOTS INTO LOTS

24 " 16 - '1951'

lot33 into lots35to37 for 1999 roll

lots8B&9D into lots38to41 for 2006 roll

ONONDAGA AVE.



434-438 OTSEGO AVE.

A CONDOMINIUM

LOT	UNIT	% COMM. AREA
35	434	33.33
36	436	33.33
37	438	33.34