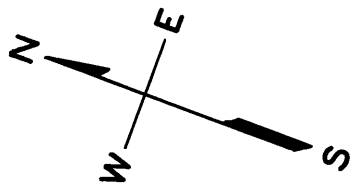


RED ROCK HILL UNIT NO. 2
CONDOMINIUM

LOT	TOWN HOUSE NO.	PARKING AREA	COMMON AREA PERCENT INTEREST	ADDRESS
1	1	1	1.422	5070 ^A DIAMOND HT. BLVD.
2	2	2	1.422	5070 ^B " " "
3	3	3	1.070	5072 ^A " " "
4	4	4	1.070	5072 ^B " " "
5	5	5	1.443	5074 ^A " " "
6	6	6	1.443	5074 ^B " " "
7	7	7	1.443	5076 ^A " " "
8	8	8	1.443	5076 ^B " " "
9	9	9	1.070	5078 ^A " " "
10	10	10	2.140	5078 ^B " " "
11	11	11	1.072	5080 ^A " " "
12	12	12	1.072	5080 ^B " " "
13	13	13	1.116	5082 ^A " " "
14	14	14	1.116	5082 ^B " " "
15	15	15	1.116	5082 ^C " " "
16	16	16	1.114	5084 ^A " " "
17	17	17	1.114	5084 ^B " " "
18	18	18	1.114	5084 ^C " " "
19	19	19	1.419	5086 ^A " " "
20	20	20	1.419	5086 ^B " " "
21	21	21	1.056	5088 ^A DIAMOND HT. BLVD.
22	22	22	1.056	5088 ^B " " "
23	23	23	1.056	5090 ^A " " "
24	24	24	1.056	5090 ^B " " "
25	25	25	1.072	5092 ^A " " "
26	26	26	2.144	5092 ^B " " "
27	27	27	1.116	5094 ^A " " "
28	28	28	1.116	5094 ^B " " "
29	29	29	1.116	5094 ^C " " "
30	30	30	1.443	5100 ^A " " "
31	31	31	1.443	5100 ^B " " "
32	32	32	1.070	5102 ^A " " "
33	33	33	1.245	5102 ^B " " "
34	34	34	1.070	5104 ^A " " "
35	35	35	1.961	5104 ^B " " "
36	36	36	1.419	5106 ^A " " "
37	37	37	1.419	5106 ^B " " "
38	38	38	1.057	5108 ^A " " "
39	39	39	1.052	5108 ^B " " "
40	40	40	1.116	5110 ^A " " "
41	41	41	2.048	5110 ^B " " "
42	42	42	1.443	5112 ^A " " "

LOT	TOWN HOUSE NO.	PARKING AREA	COMMON AREA PERCENT INTEREST	ADDRESS
43	43	43	1.618	5112 B DIAMOND HT. BLVD.
44	44	44	1.113	5114 A " " "
45	45	45	1.113	5114 B " " "
46	46	46	1.113	5114 C " " "
47	47	47	1.113	5116 A " " "
48	48	48	1.113	5116 B " " "
49	49	49	1.113	5116 C " " "
50	50	50	1.470	5118 A " " "
51	51	51	1.470	5118 B " " "
52	52	52	1.116	5120 A " " "
53	53	53	1.116	5120 B " " "
54	54	54	1.116	5120 C " " "
55	55	55	1.072	5122 A " " "
56	56	56	1.072	5122 B " " "
57	57	57	1.422	5124 A " " "
58	58	58	1.422	5124 B " " "
59	59	59	1.422	298A RED ROCK WAY
60	60	60	1.422	298B " " "
61	61	61	1.513	290A " " "
62	62	62	1.683	290B " " "
63	63	63	1.393	282A " " "
64	64	64	1.393	282B " " "
65	65	65	1.516	274A " " "
66	66	66	1.687	274B " " "
67	67	67	1.516	266A " " "
68	68	68	1.687	266B " " "
69	69	69	1.419	258A " " "
70	70	70	1.419	258B " " "
71	71	71	1.393	250A " " "
72	72	72	1.377	250B " " "
73	73	73	1.393	242A " " "
74	74	74	1.377	242B " " "
75	75	75	1.303	5 " " "
76	76	76	1.303	7 " " "



© COPYRIGHT SAN FRANCISCO
CITY & COUNTY ASSESSOR 1995

7515A

RED ROCK HILL UNIT NO.2

SHEET 3

SITE MAP

SCALE: 1"= 40'-0"

BLVD.

HEIGHTS

DIAMOND

BLDG. NO.8
4 UNITS

BLDG. NO. 7

15 UNITS

BLDG. NO.6

13 UNITS

BLDG. NO. 5
14 UNITS

BLDG. NO. 4

12 UNITS

WAY

ROCK

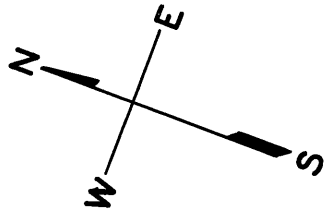
RED

BLDG. NO.10
10 UNITS

BLDG. NO. 9
8 UNITS

RED ROCK WAY

DUNCAN



© COPYRIGHT SAN FRANCISCO
CITY & COUNTY ASSESSOR 1995

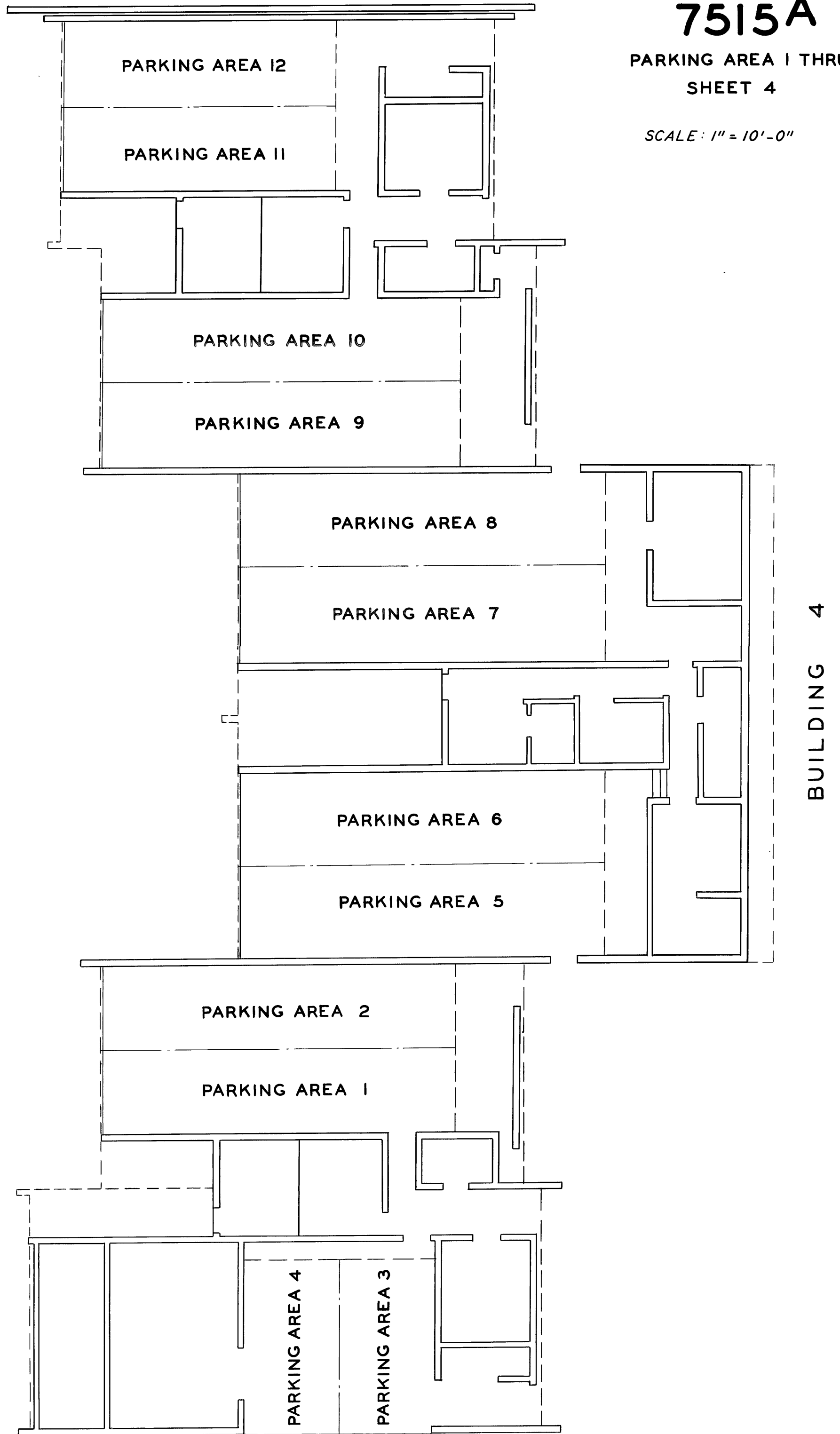
DIAMOND HEIGHTS BLVD.

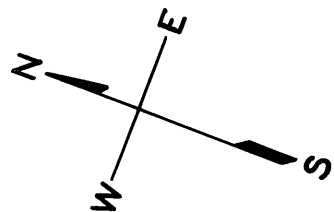
DUNCAN

7515A

PARKING AREA 1 THRU 12
SHEET 4

SCALE: 1" = 10'-0"





© COPYRIGHT SAN FRANCISCO
CITY & COUNTY ASSESSOR 1995

DIAMOND HEIGHTS BLVD.

BUILDING 4
FIRST FLOOR

TOWN HOUSE II
LOT II

TOWN HOUSE 9
LOT 9

TOWN HOUSE 7
LOT 7

TOWN HOUSE 5
LOT 5

TOWN HOUSE 3
LOT 3

TOWN HOUSE I
LOT I

7515A

TOWN HOUSE I, 3, 5, 7, 9 & II
SHEET 5

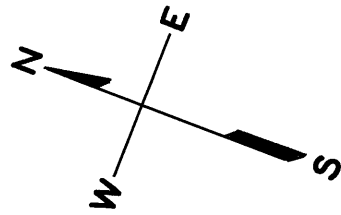
SCALE: 1" = 10'-0"

DUNCAN

7515A

TOWN HOUSE 2,4,6,8,10 & 12
SHEET 6

SCALE: 1" = 10'-0"



TOWN HOUSE 12
LOT 12

TOWN HOUSE 10
LOT 10

TOWN HOUSE 10
LOT 10

Split Level

TOWN HOUSE 8
LOT 8

TOWN HOUSE 6
LOT 6

TOWN HOUSE 4
LOT 4

TOWN HOUSE 2
LOT 2

THIRD FLOOR

BUILDING 4
SECOND FLOOR

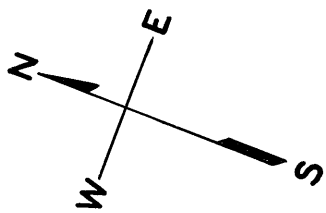
DIAMOND HEIGHTS BLVD.

DUNCAN

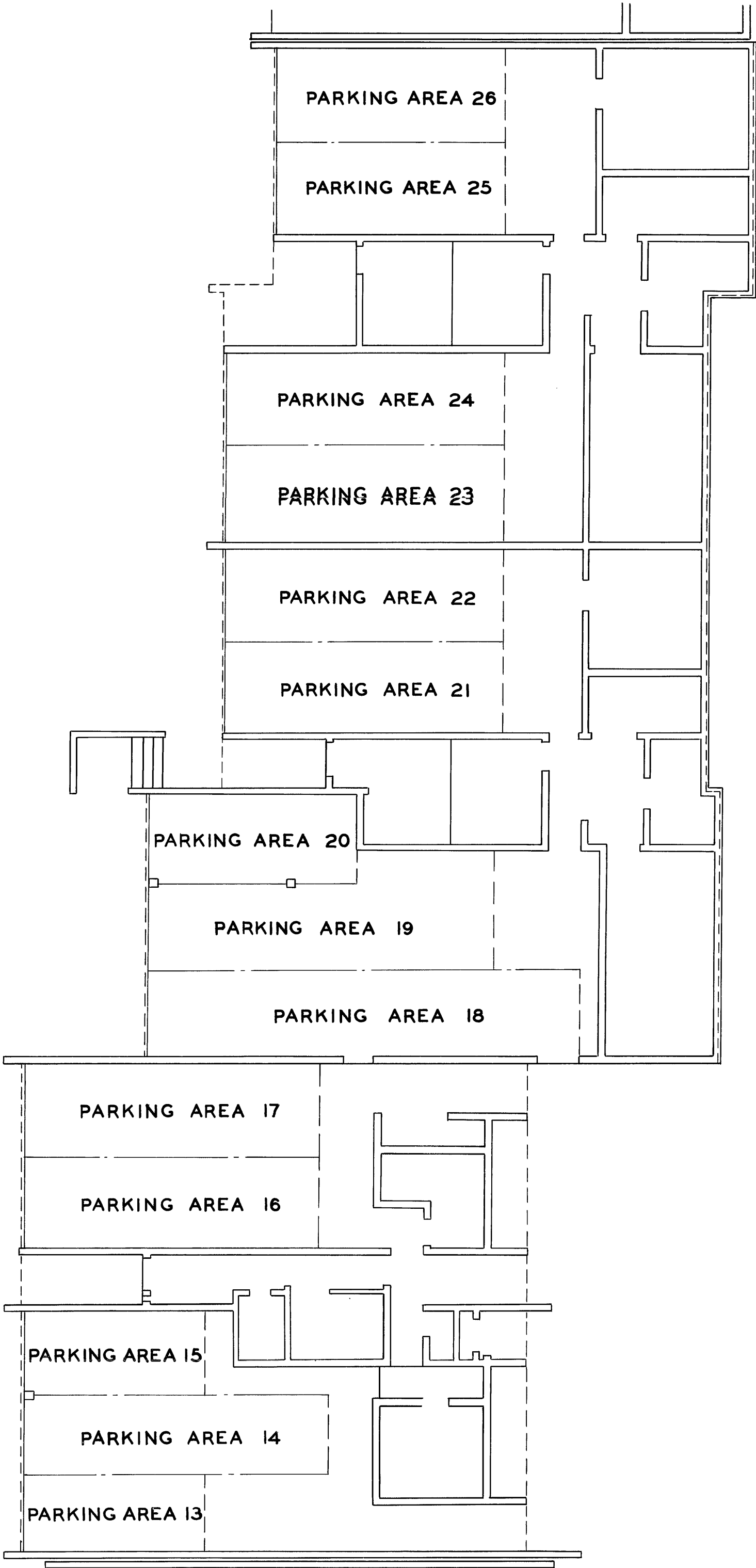
7515A

PARKING AREA 13 THRU 26
SHEET 7

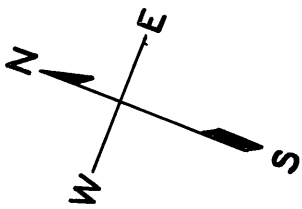
SCALE: 1"=10'-0"



DIAMOND HEIGHTS BLVD.

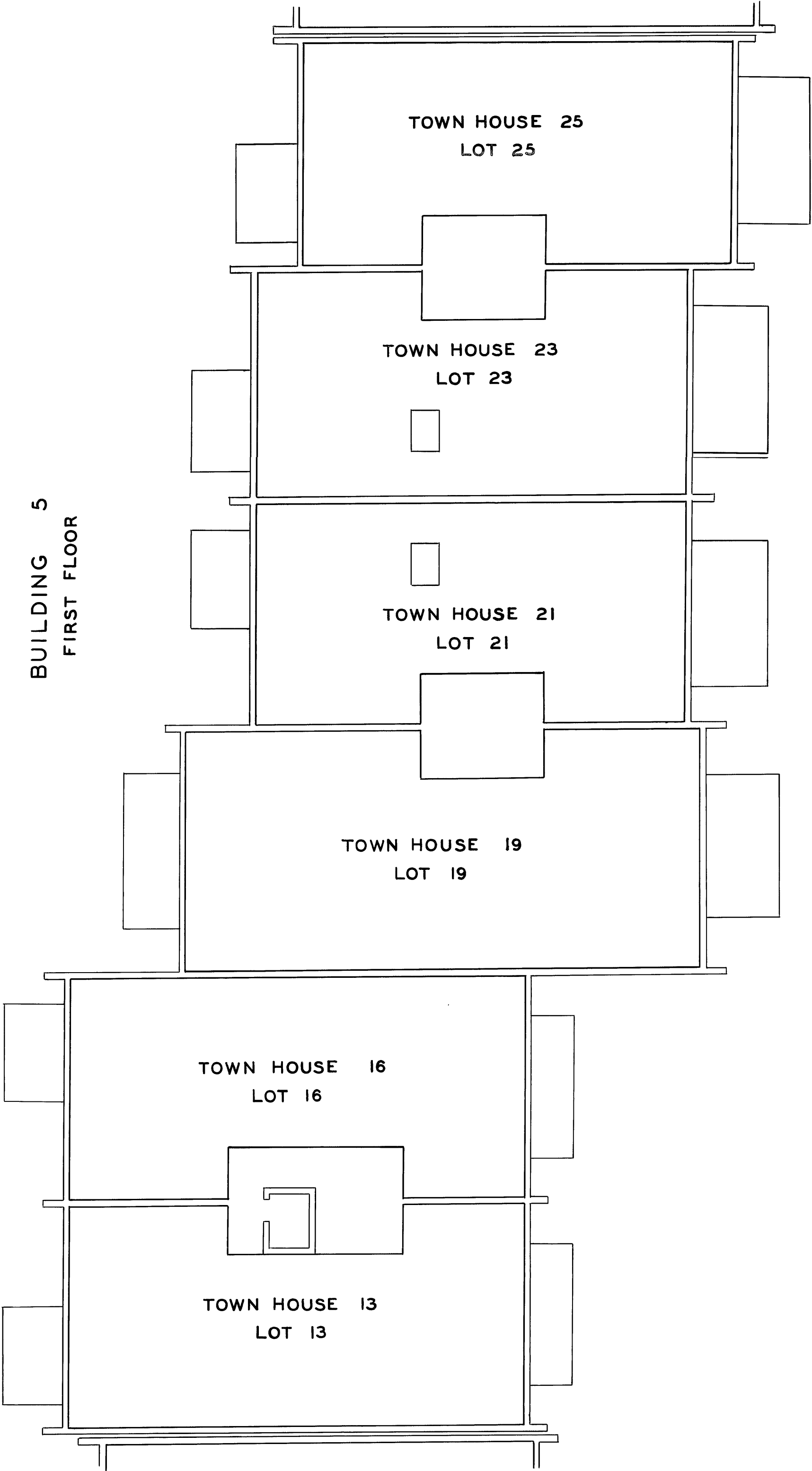


BUILDING 5



DIAMOND HEIGHTS BLVD.

BUILDING 5
FIRST FLOOR



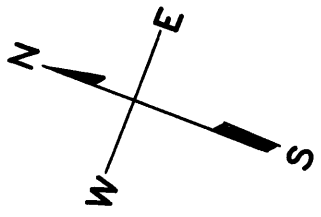
7515A

© COPYRIGHT SAN FRANCISCO
CITY & COUNTY ASSESSOR 1995

TOWN HOUSE 14,17,20,22,24 & 26

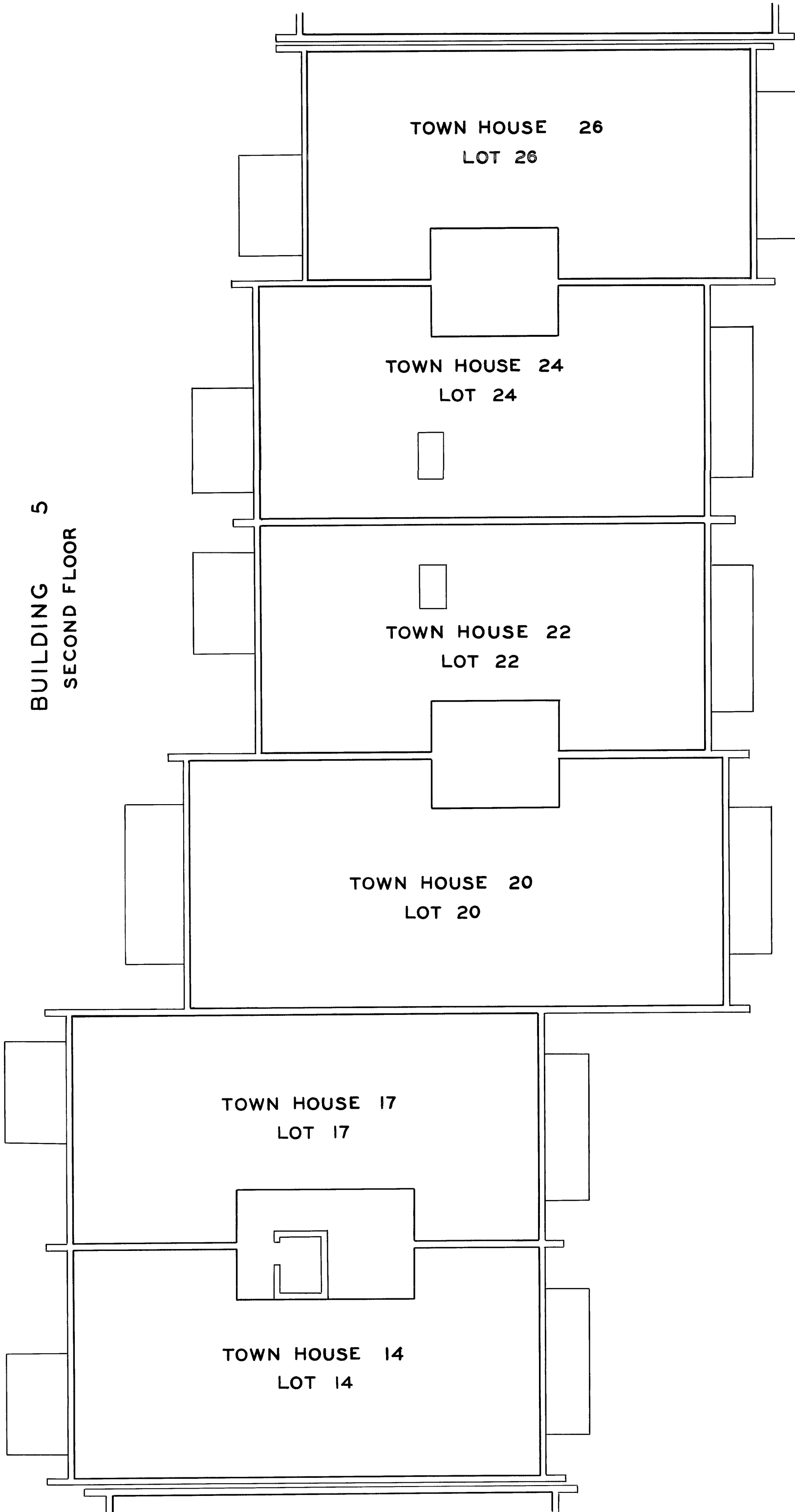
SHEET 9

SCALE: 1"= 10'-0"



DIAMOND HEIGHTS BLVD.

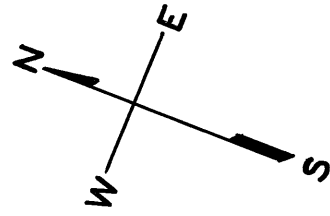
BUILDING 5
SECOND FLOOR



7515A

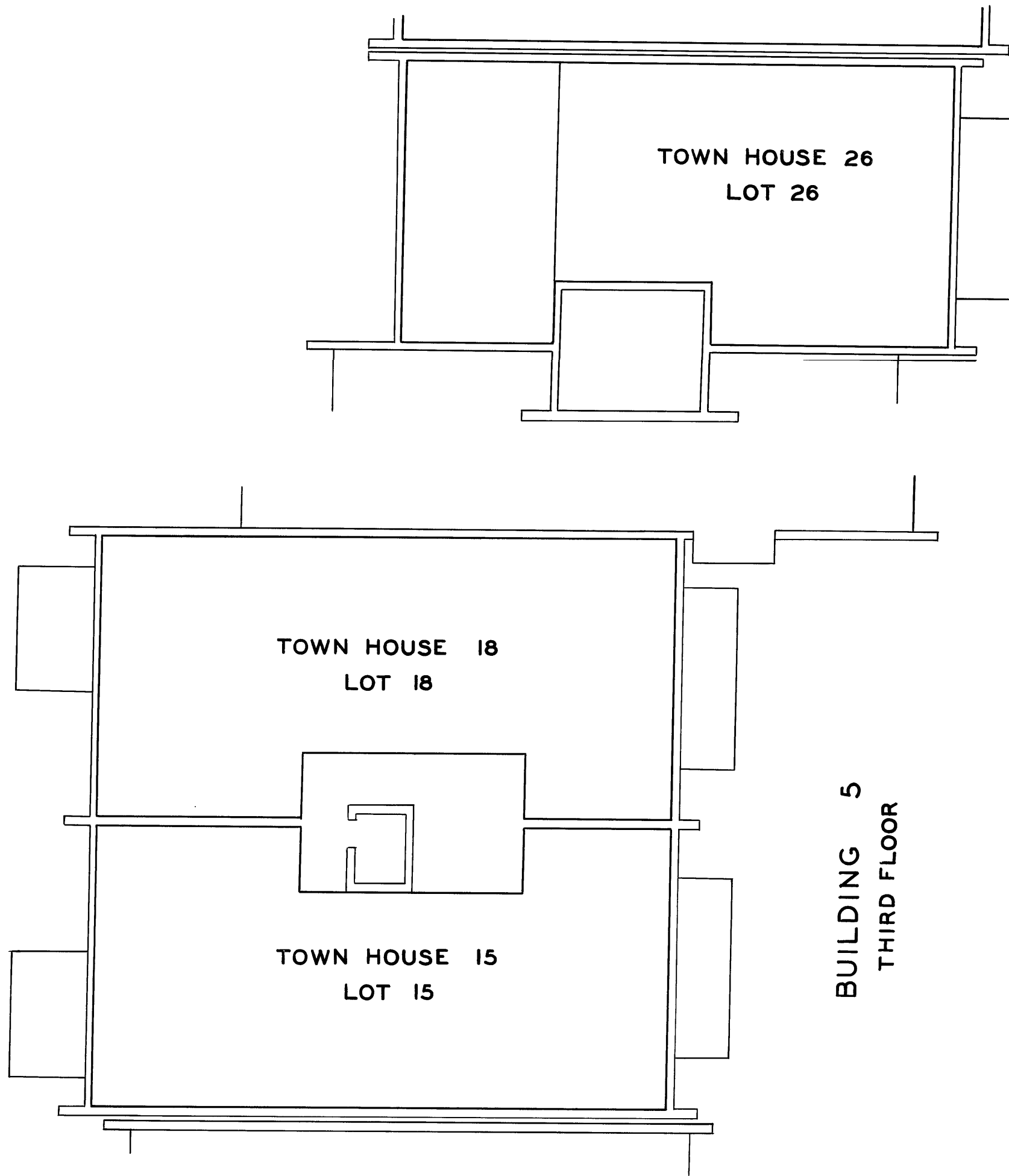
TOWN HOUSE 15,18 & 26
SHEET 10

SCALE: 1" = 10'-0"

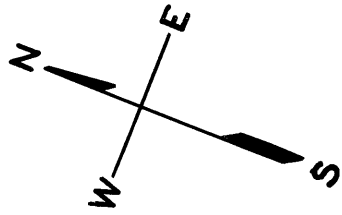


© COPYRIGHT SAN FRANCISCO
CITY & COUNTY ASSESSOR 1995

DIAMOND HEIGHTS BLVD.



BUILDING 5
THIRD FLOOR



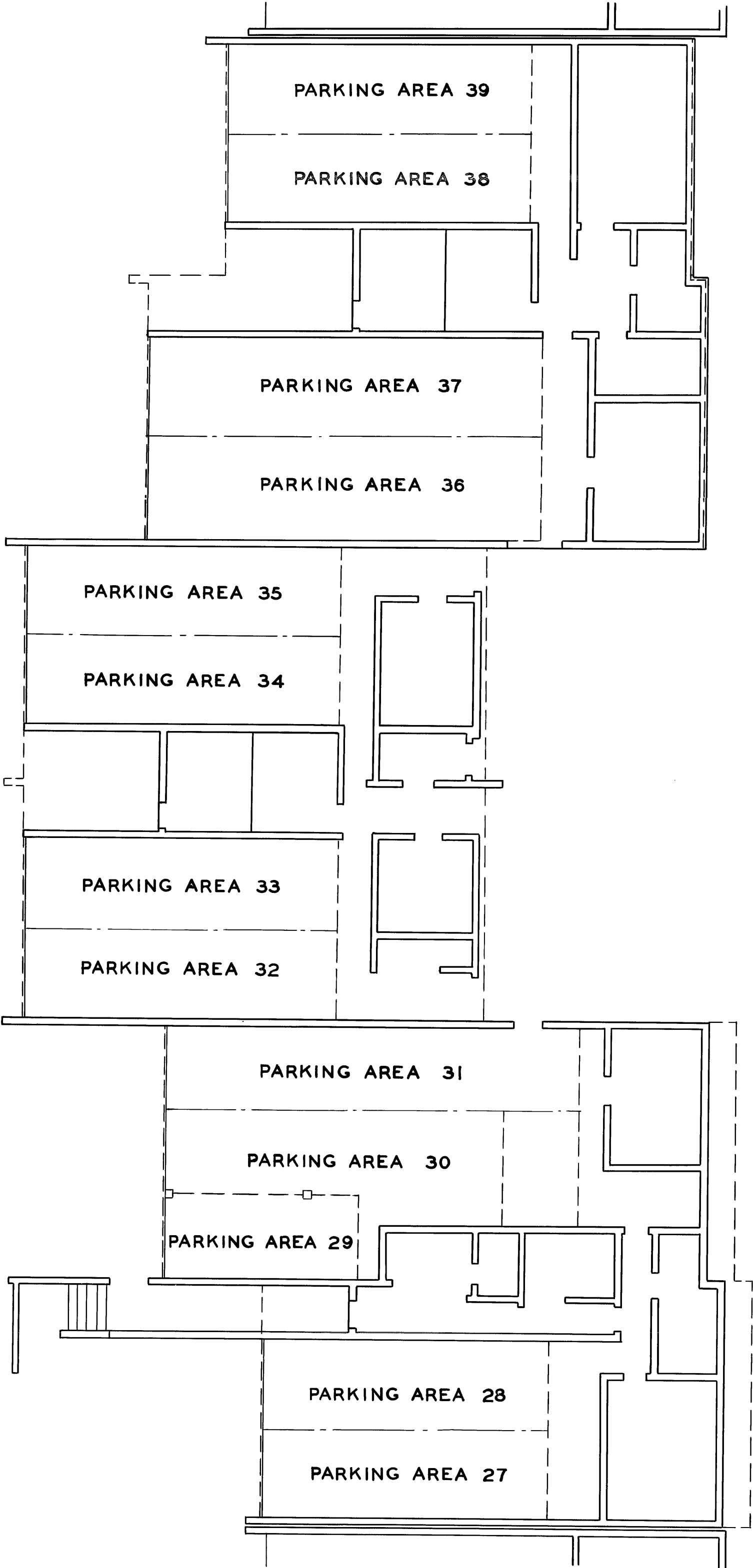
© COPYRIGHT SAN FRANCISCO
CITY & COUNTY ASSESSOR 1995

7515A

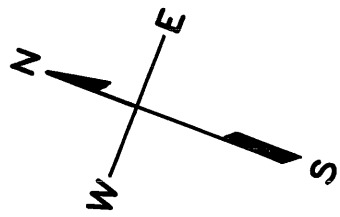
PARKING AREA 27 THRU 39
SHEET II

SCALE: 1"=10'-0"

DIAMOND HEIGHTS BLVD.



BUILDING 6



© COPYRIGHT SAN FRANCISCO
CITY & COUNTY ASSESSOR 1995

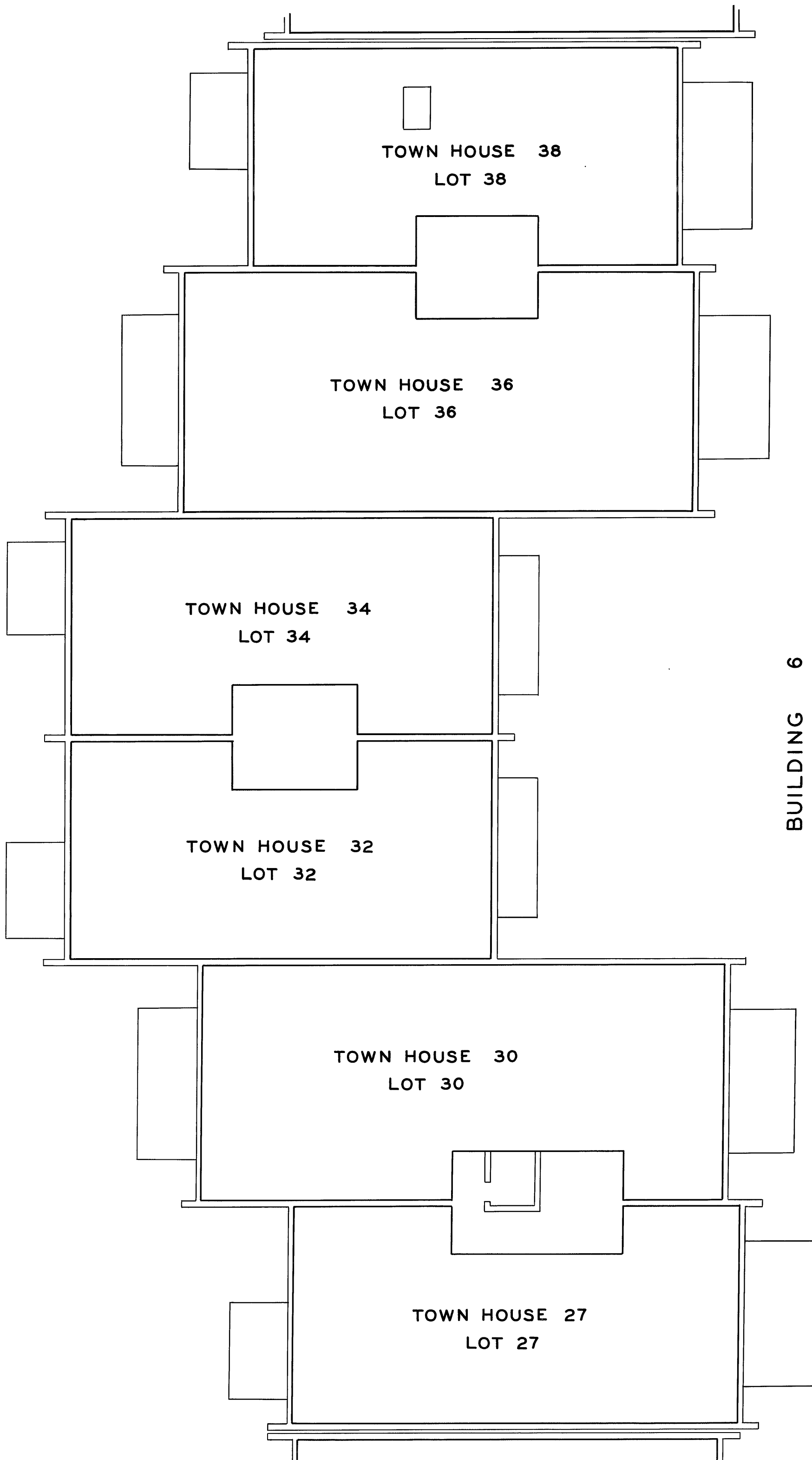
7515A

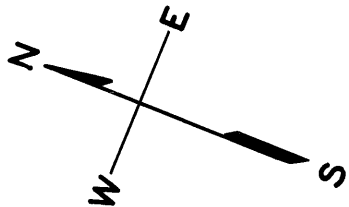
TOWN HOUSE 27,30,32,34,36 & 38

SHEET 12

SCALE: 1"=10'-0"

DIAMOND HEIGHTS BLVD.





7515A

TOWN HOUSE 28,29,31,33,35,37 & 39
SHEET 13

SCALE: 1"=10'-0"

© COPYRIGHT SAN FRANCISCO
CITY & COUNTY ASSESSOR 1995

DIAMOND HEIGHTS BLVD.

BUILDING 6
SECOND FLOOR

TOWN HOUSE 39
LOT 39

TOWN HOUSE 37
LOT 37

TOWN HOUSE 35
LOT 35

TOWN HOUSE 33
LOT 33

TOWN HOUSE 31
LOT 31

TOWN HOUSE 28
LOT 28

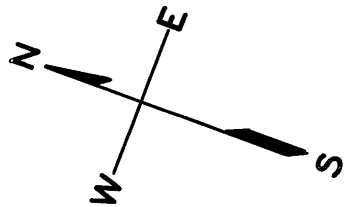
TOWN HOUSE 29
LOT 29

TOWN HOUSE 35
LOT 35

Spilt Level

THIRD FLOOR

THIRD FLOOR



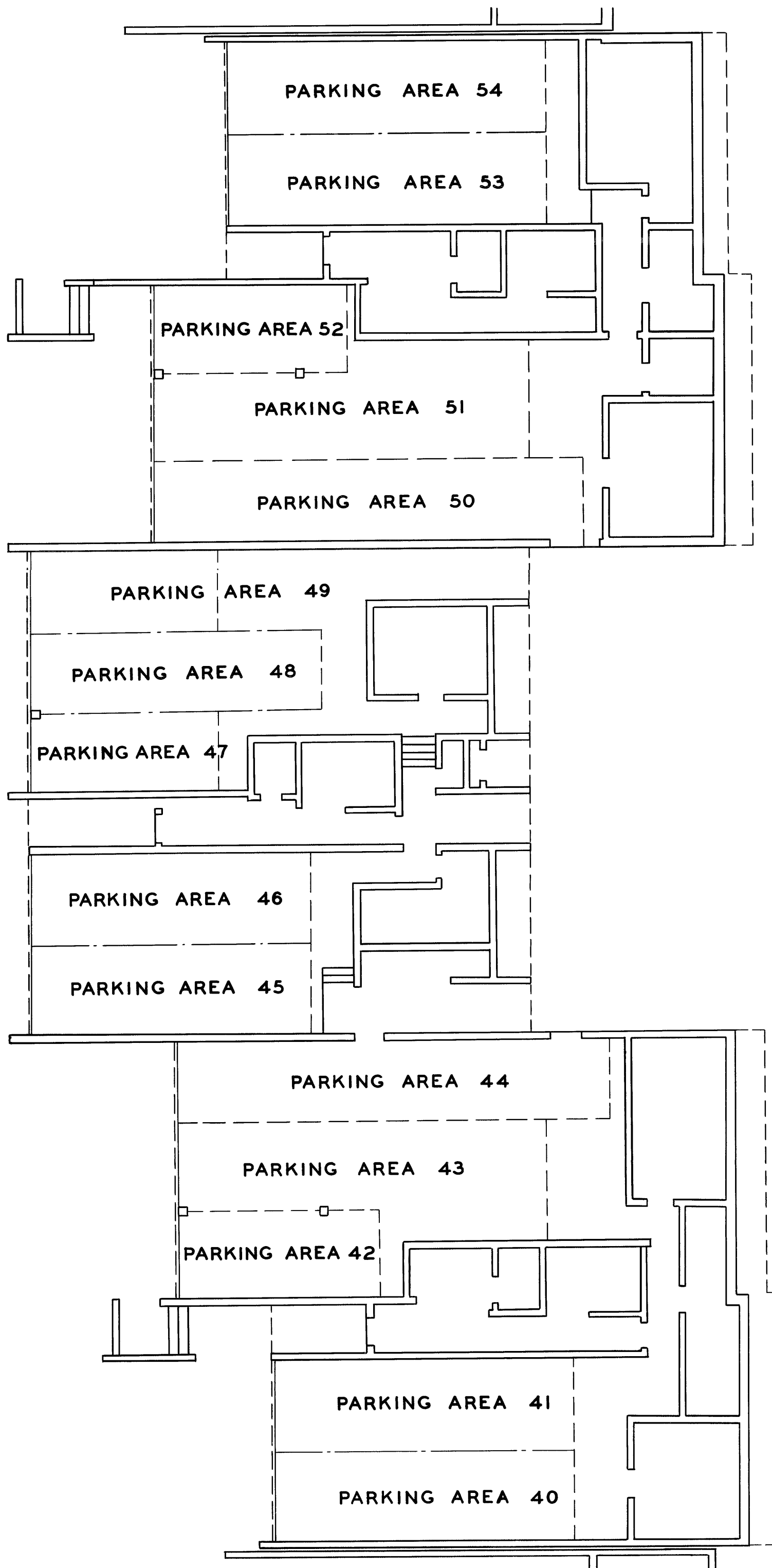
© COPYRIGHT SAN FRANCISCO
CITY & COUNTY ASSESSOR 1995

7515A

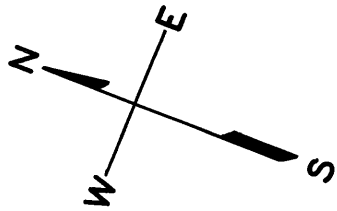
PARKING AREA 40THRU 54
SHEET 14

SCALE: 1"=10'-0"

DIAMOND HEIGHTS BLVD.



BUILDING 7



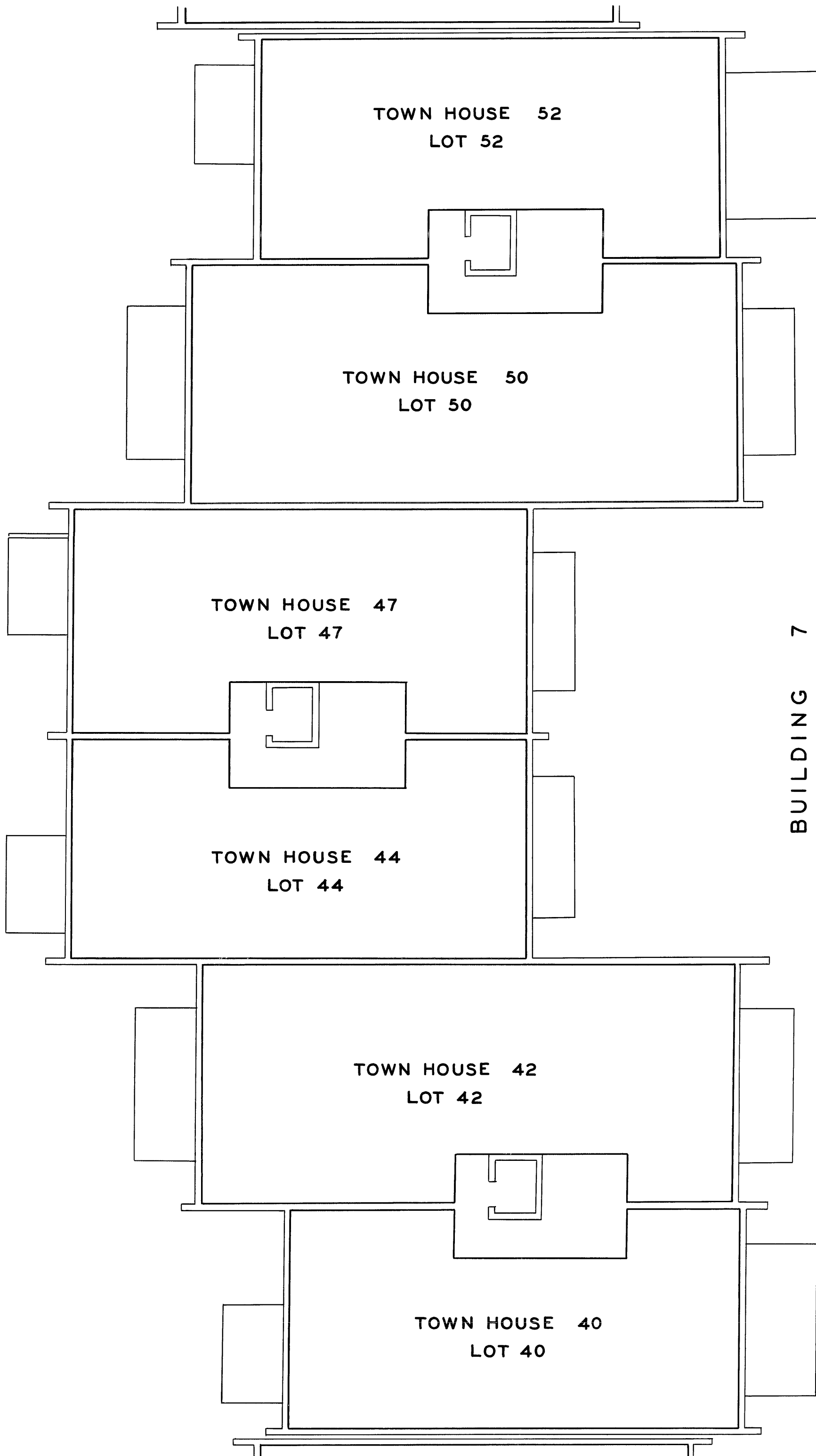
© COPYRIGHT SAN FRANCISCO
CITY & COUNTY ASSESSOR 1995

7515A

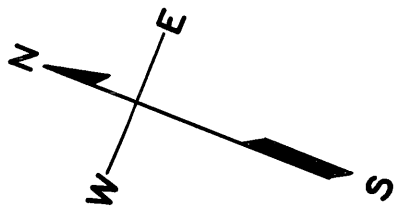
TOWN HOUSE 40,42,44,47,50,& 52
SHEET 15

SCALE: 1" = 10'-0"

DIAMOND HEIGHTS BLVD.



BUILDING 7
FIRST FLOOR

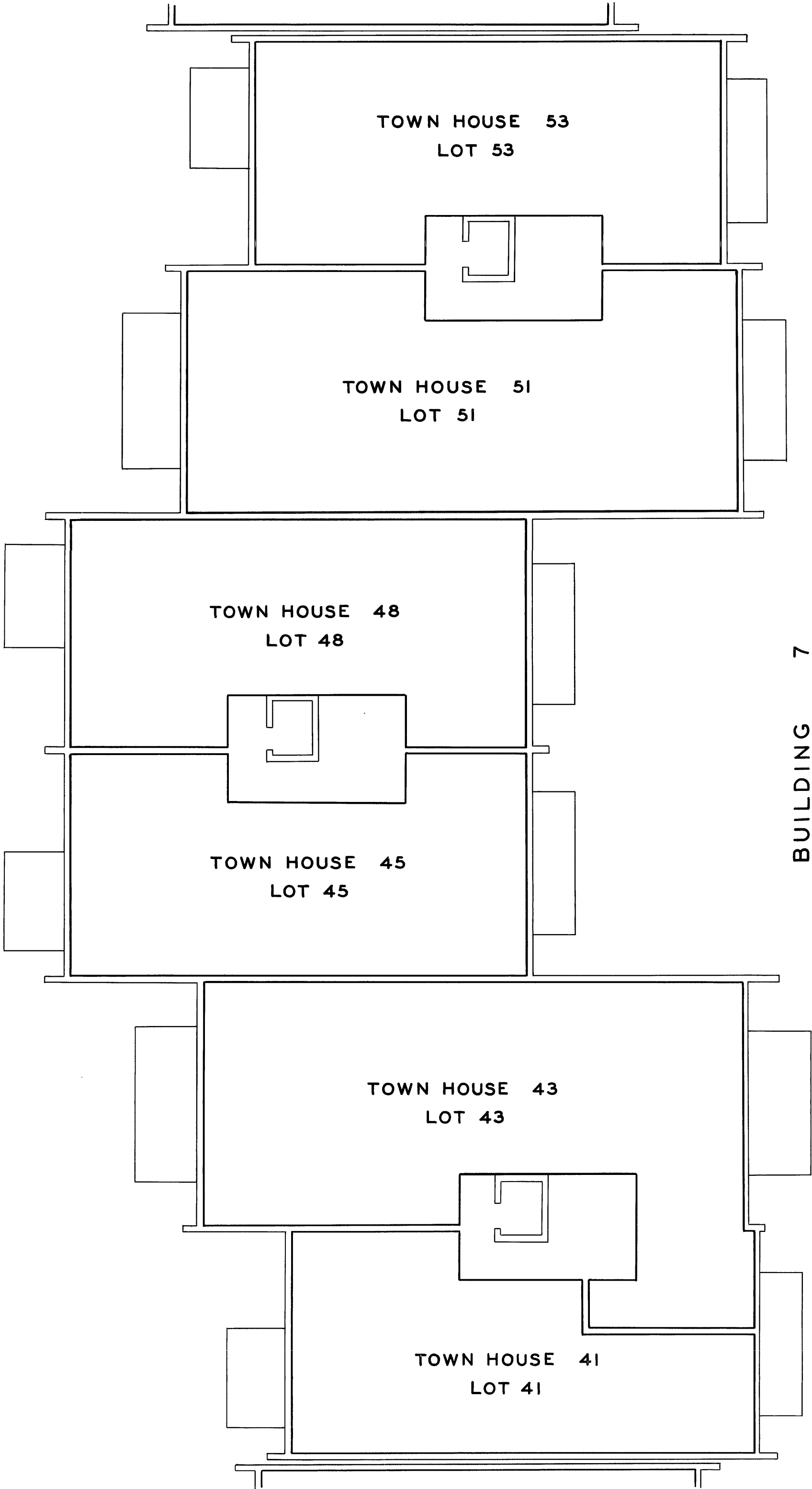


7515A

TOWN HOUSE 41,43,45,48,51 & 53
SHEET 16

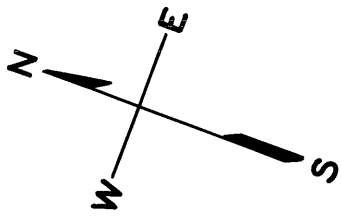
SCALE: 1"=10'-0"

DIAMOND HEIGHTS BLVD.



BUILDING 7
SECOND FLOOR

D I A M O N D H E I G H T S B L V D .

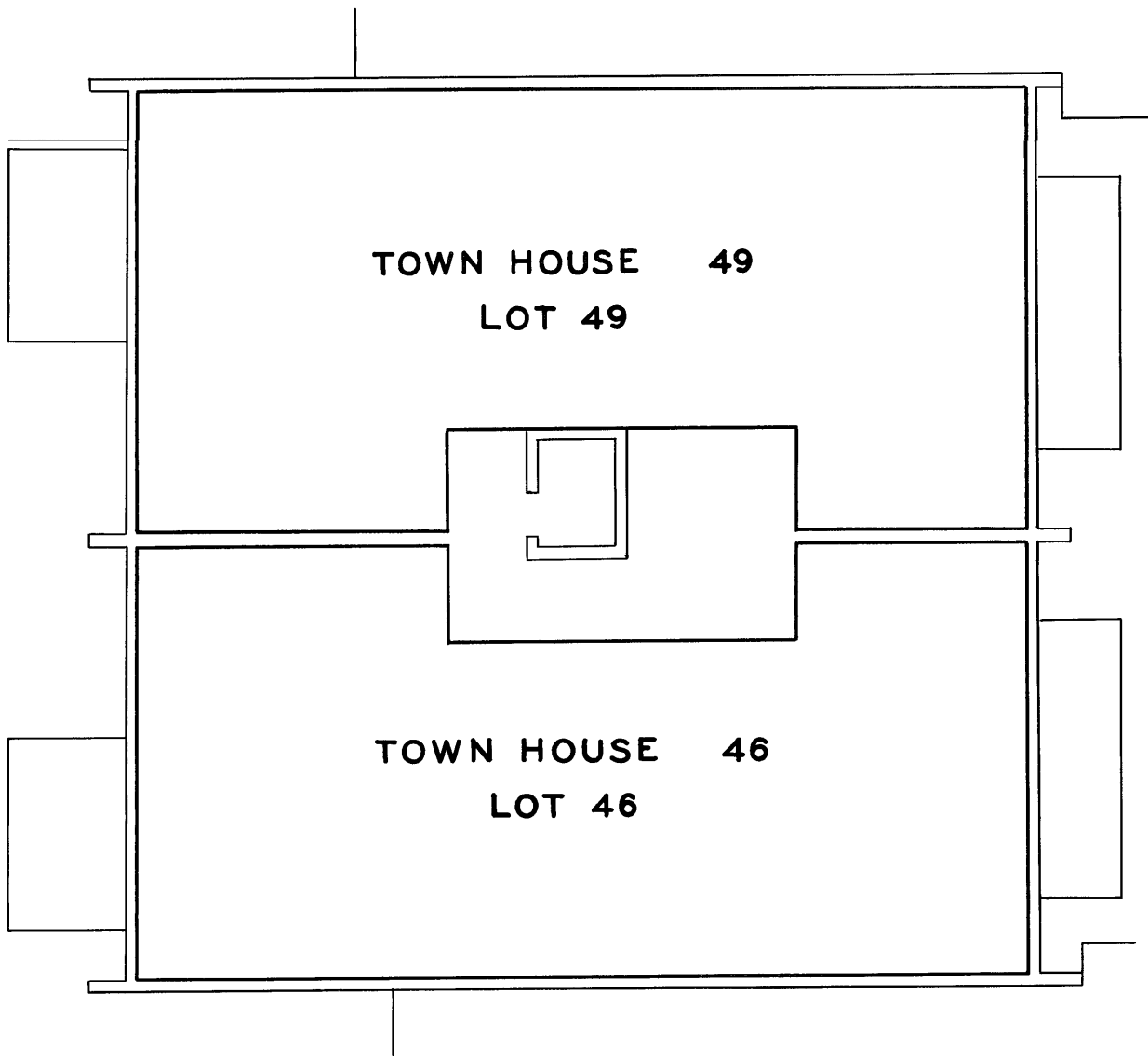
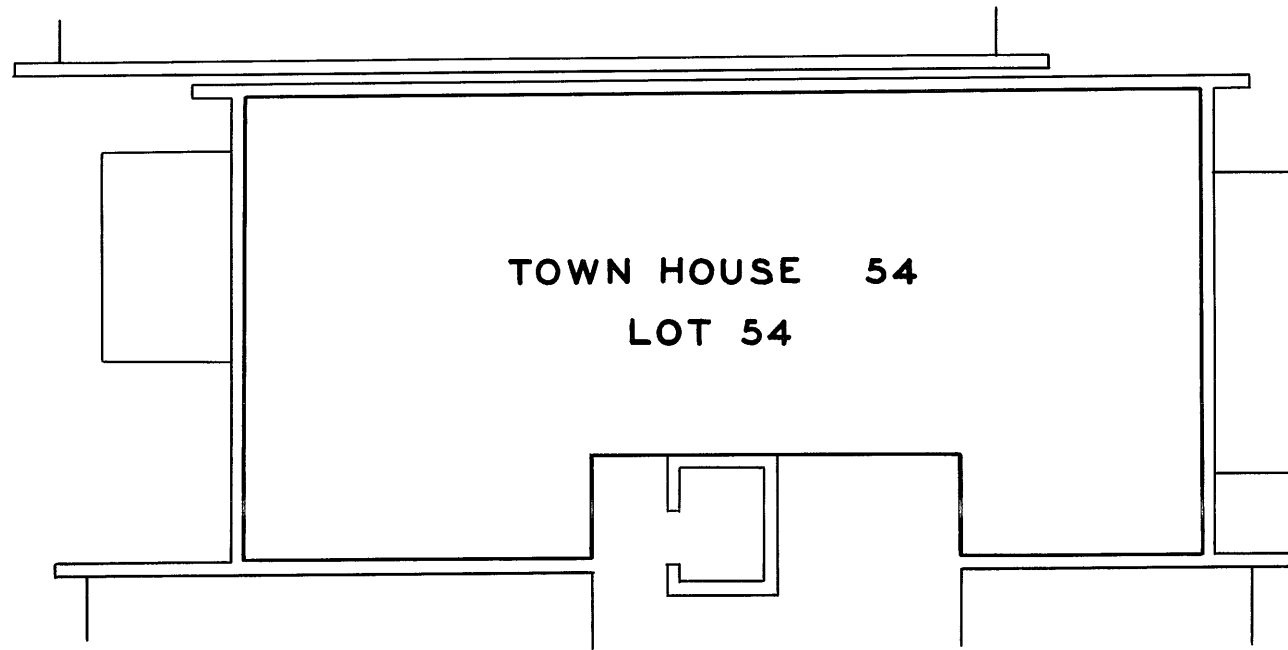


© COPYRIGHT SAN FRANCISCO
CITY & COUNTY ASSESSOR 1995

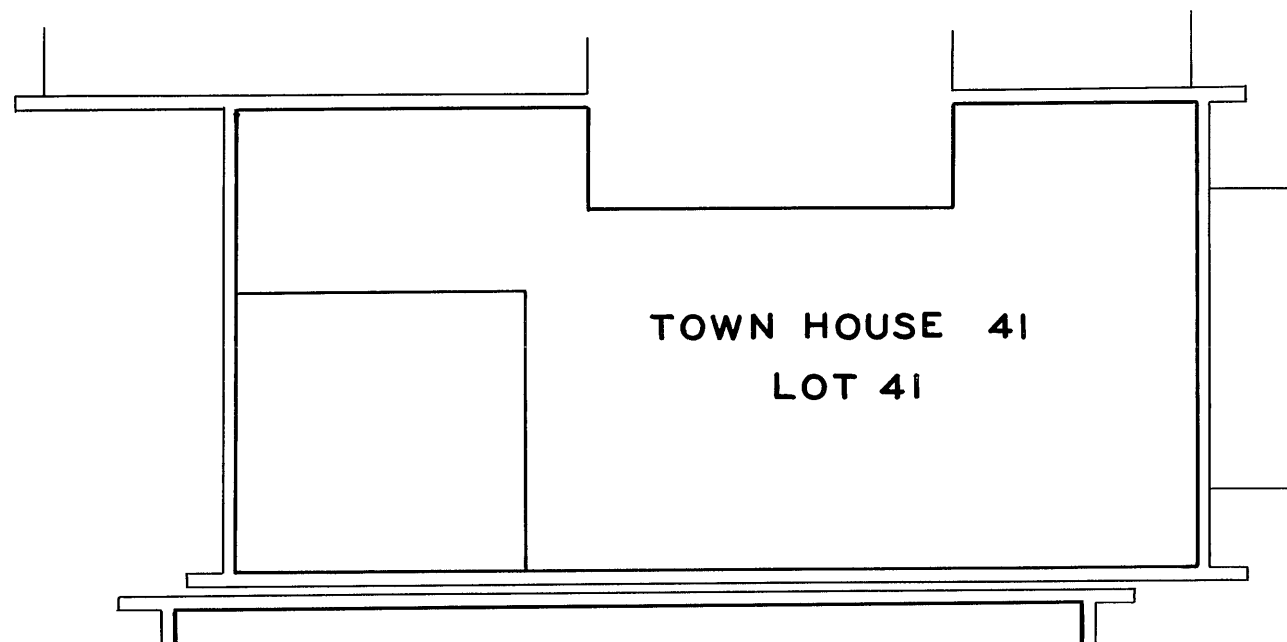
7515A

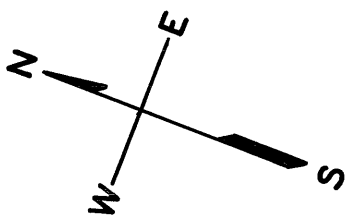
TOWN HOUSE 41, 46, 49 & 54
SHEET 17

SCALE: 1"=10'-0"



BUILDING 7
THIRD FLOOR





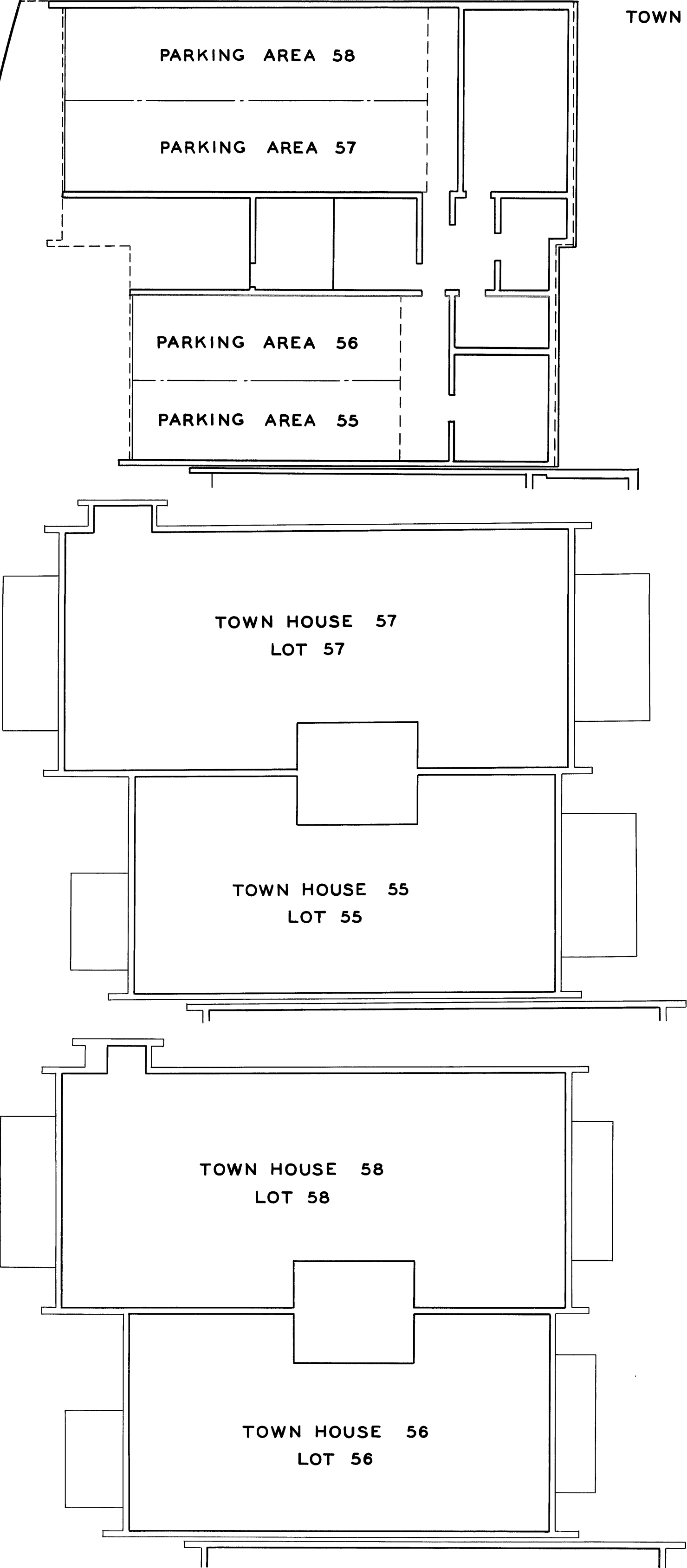
© COPYRIGHT SAN FRANCISCO
CITY & COUNTY ASSESSOR 1995

7515A

TOWN HOUSE & PARKING AREA
55,56,57 & 58
SHEET 18

SCALE: 1" = 10'-0"

DIAMOND HEIGHTS BLVD.



BASEMENT

FIRST FLOOR

SECOND FLOOR

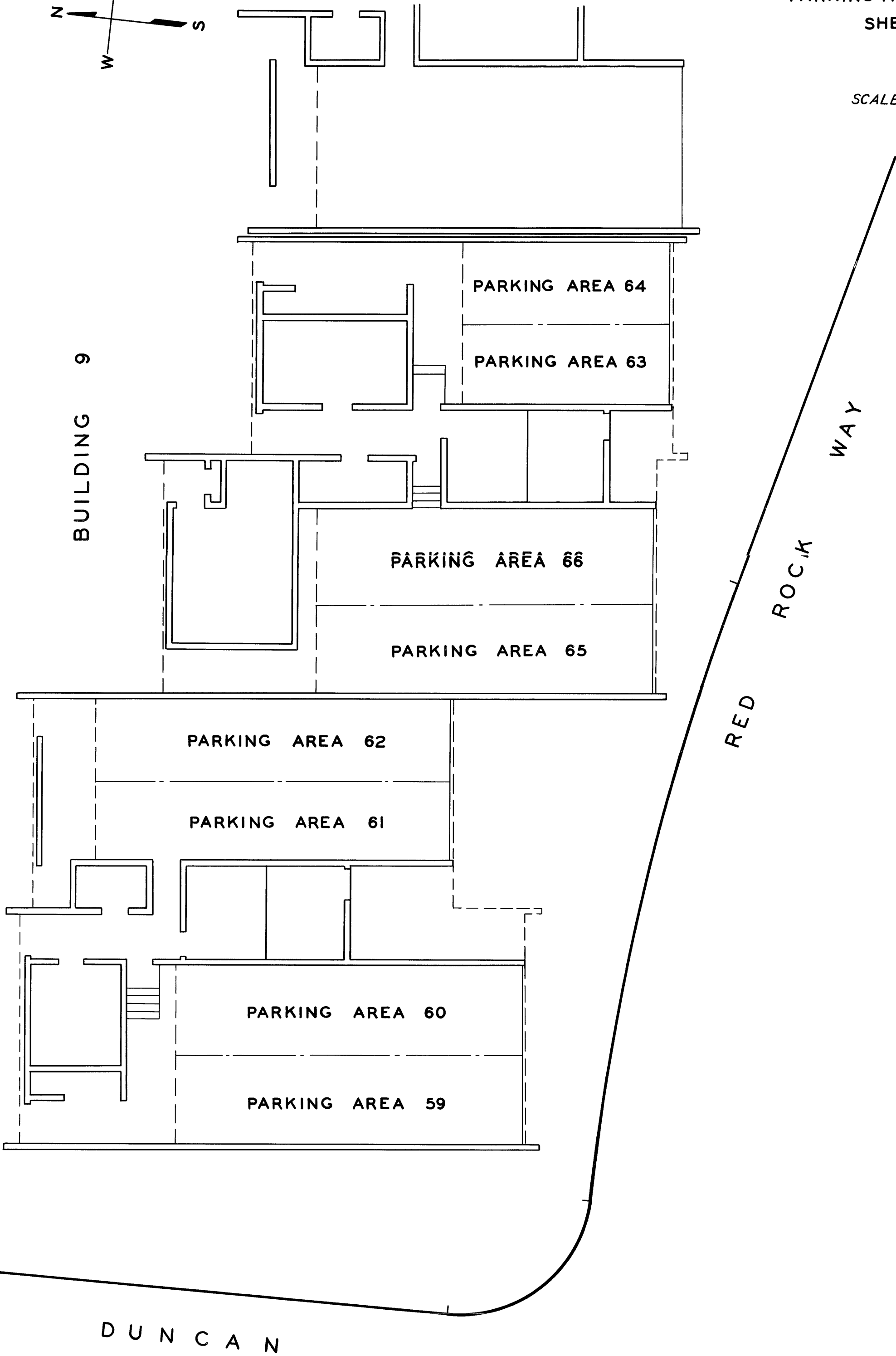
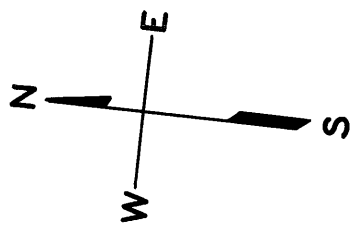
8

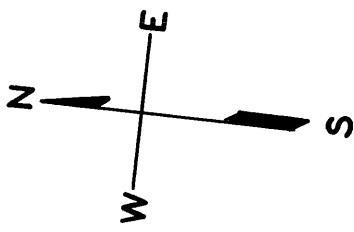
BUILDING

7515A

PARKING AREA 59 THRU 66
SHEET 19

SCALE: 1" = 10'-0"

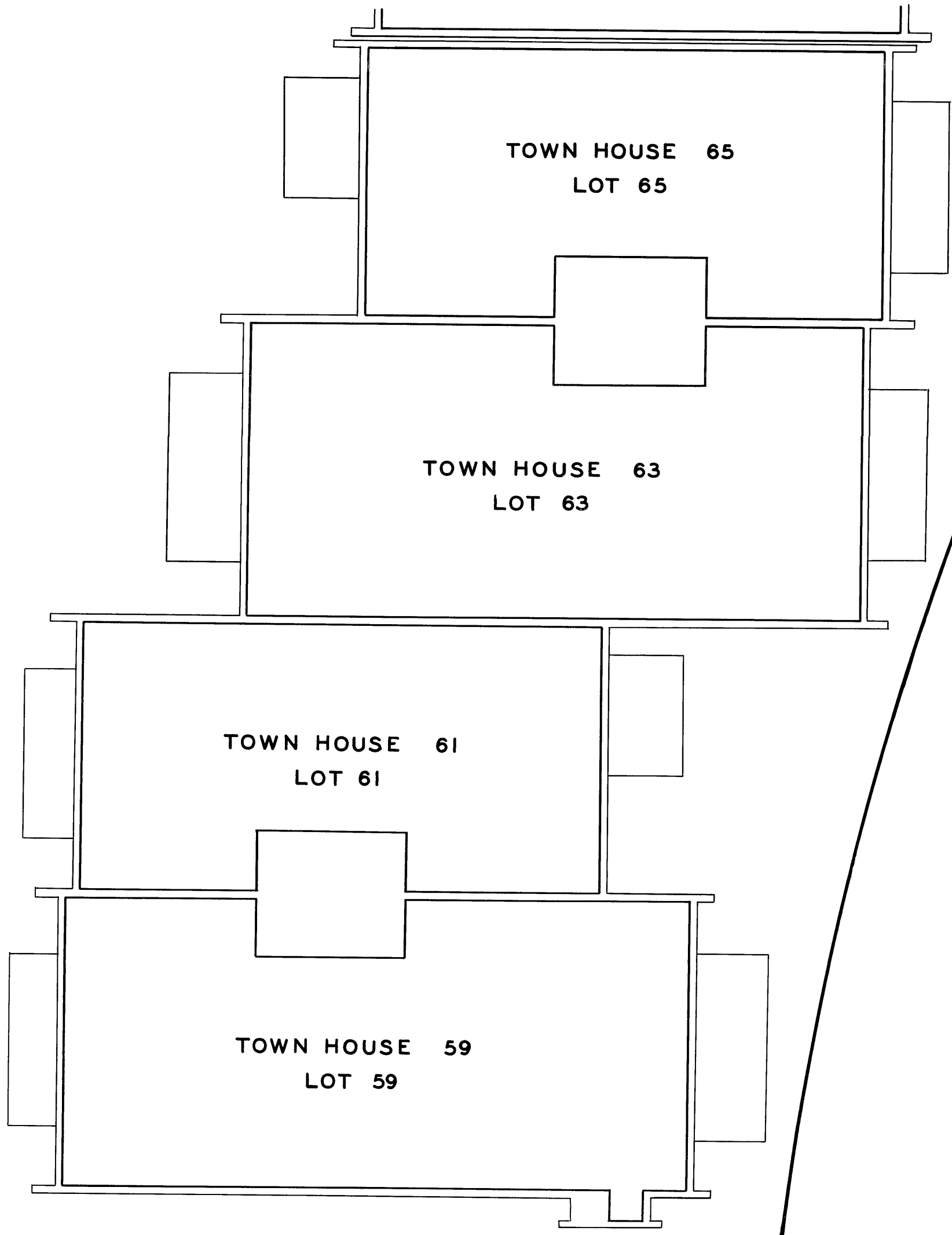




7515A

TOWN HOUSE 59,61,63 & 65
SHEET 20

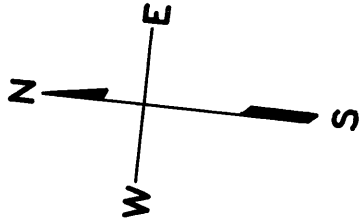
SCALE: 1"=10'-0"



RED ROCK WAY

BUILDING 9
FIRST FLOOR

DUNCAN

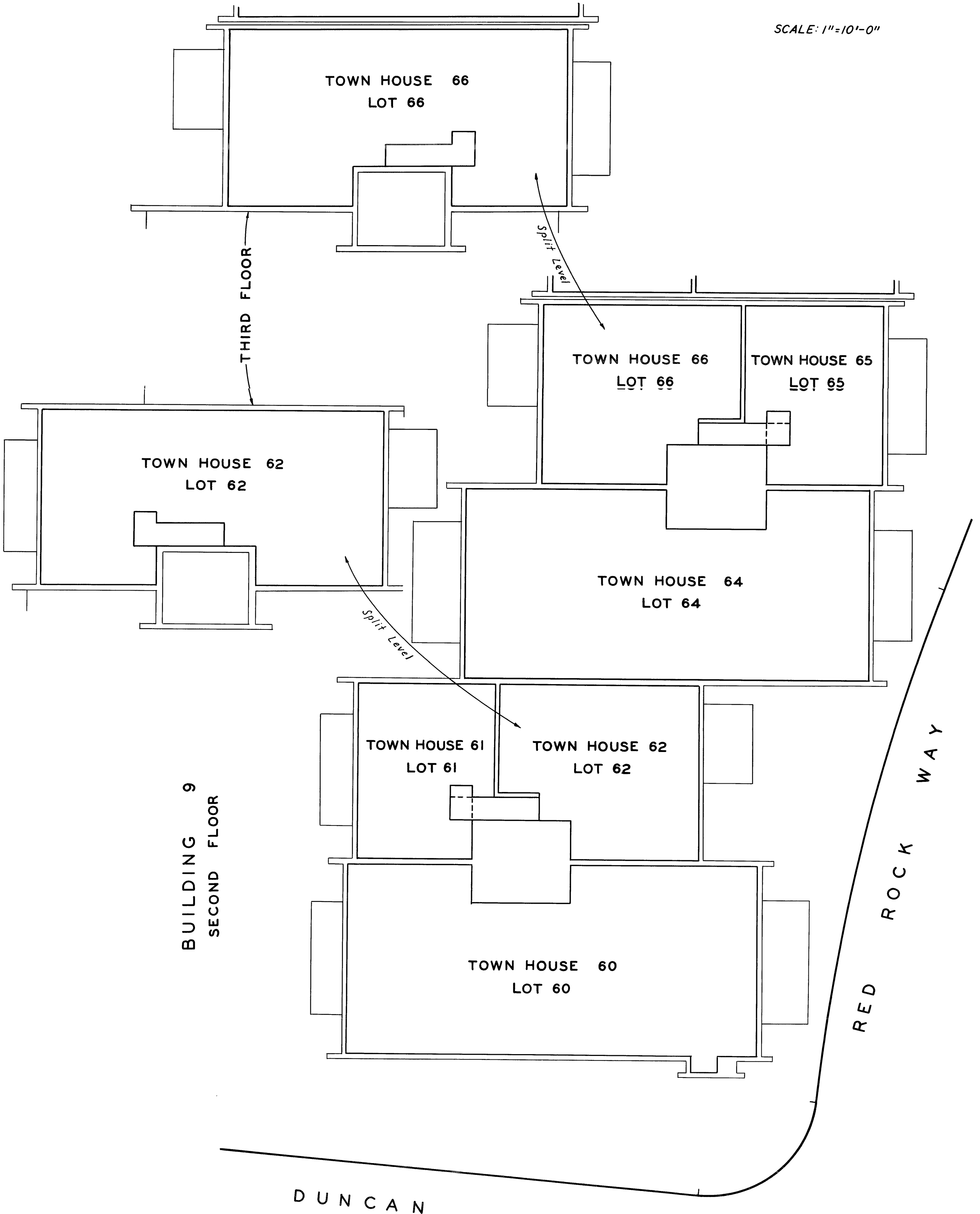


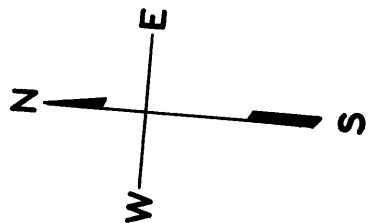
© COPYRIGHT SAN FRANCISCO
CITY & COUNTY ASSESSOR 1995

7515A

TOWN HOUSE 60,61,62,64,65 & 66
SHEET 21

SCALE: 1"=10'-0"





© COPYRIGHT SAN FRANCISCO
CITY & COUNTY ASSESSOR 1995

7515A

PARKING AREA 67 THRU 76
SHEET 22

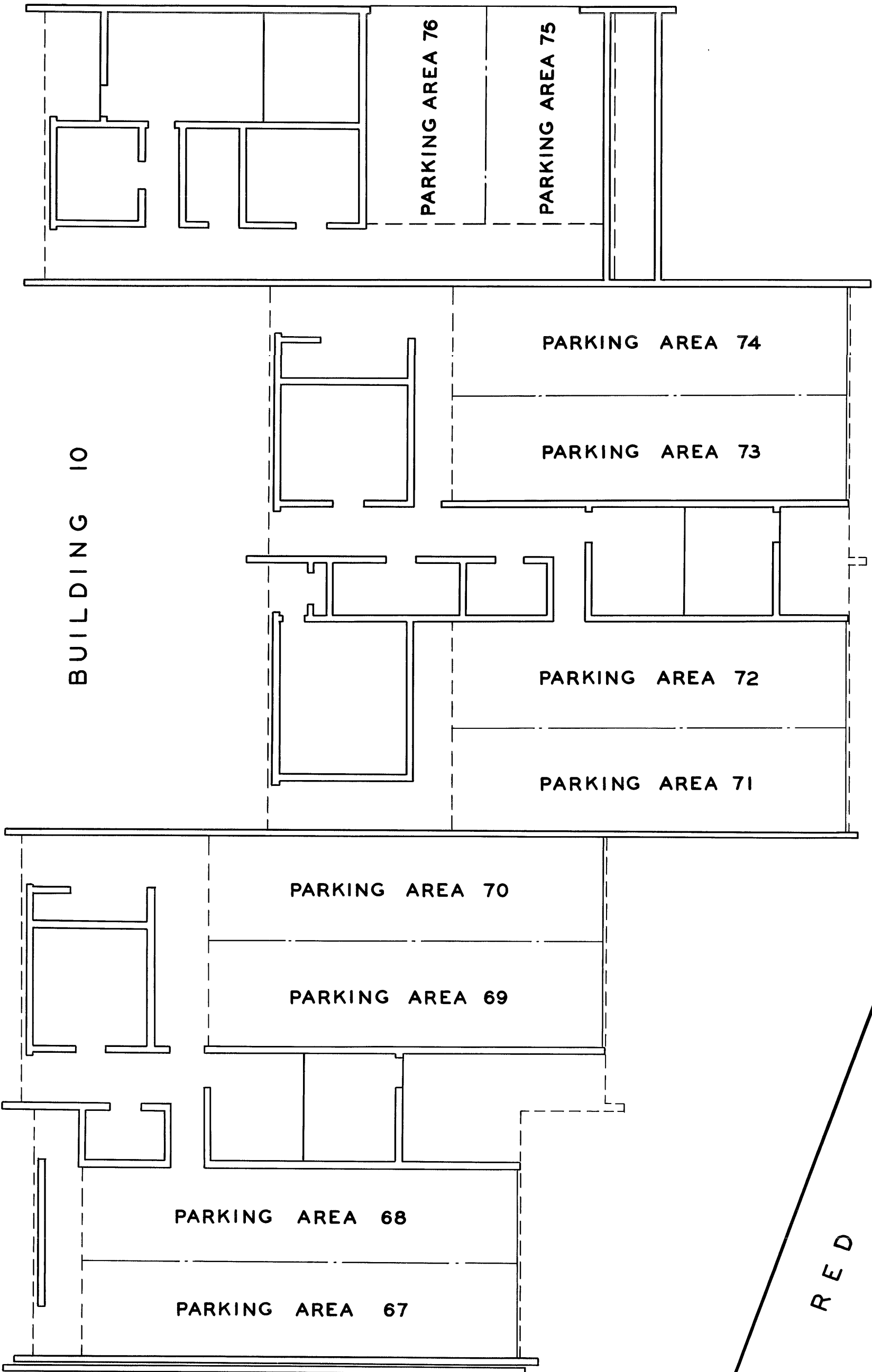
SCALE: 1"=10'-0"

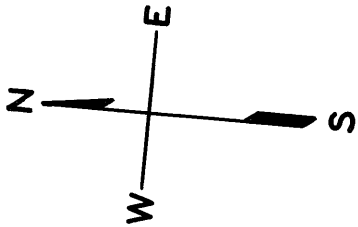
RED ROCK WAY

WAY

ROCK

RED





7515A

TOWN HOUSE 67, 69, 71, 73 & 75
SHEET 23

SCALE: 1" = 10' - 0"

RED ROCK WAY

BUILDING 10
FIRST FLOOR

TOWN HOUSE 75
LOT 75

TOWN HOUSE 73
LOT 73

TOWN HOUSE 71
LOT 71

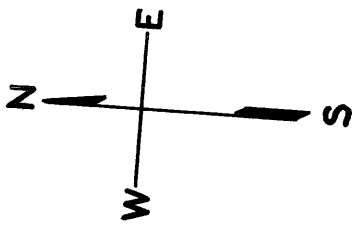
TOWN HOUSE 69
LOT 69

TOWN HOUSE 67
LOT 67

WAY

ROCK

RED



© COPYRIGHT SAN FRANCISCO
CITY & COUNTY ASSESSOR 1995

RED ROCK WAY

7515A

TOWN HOUSE 67,68,70,72,74 & 76
SHEET 24

SCALE: 1"=10'-0"

