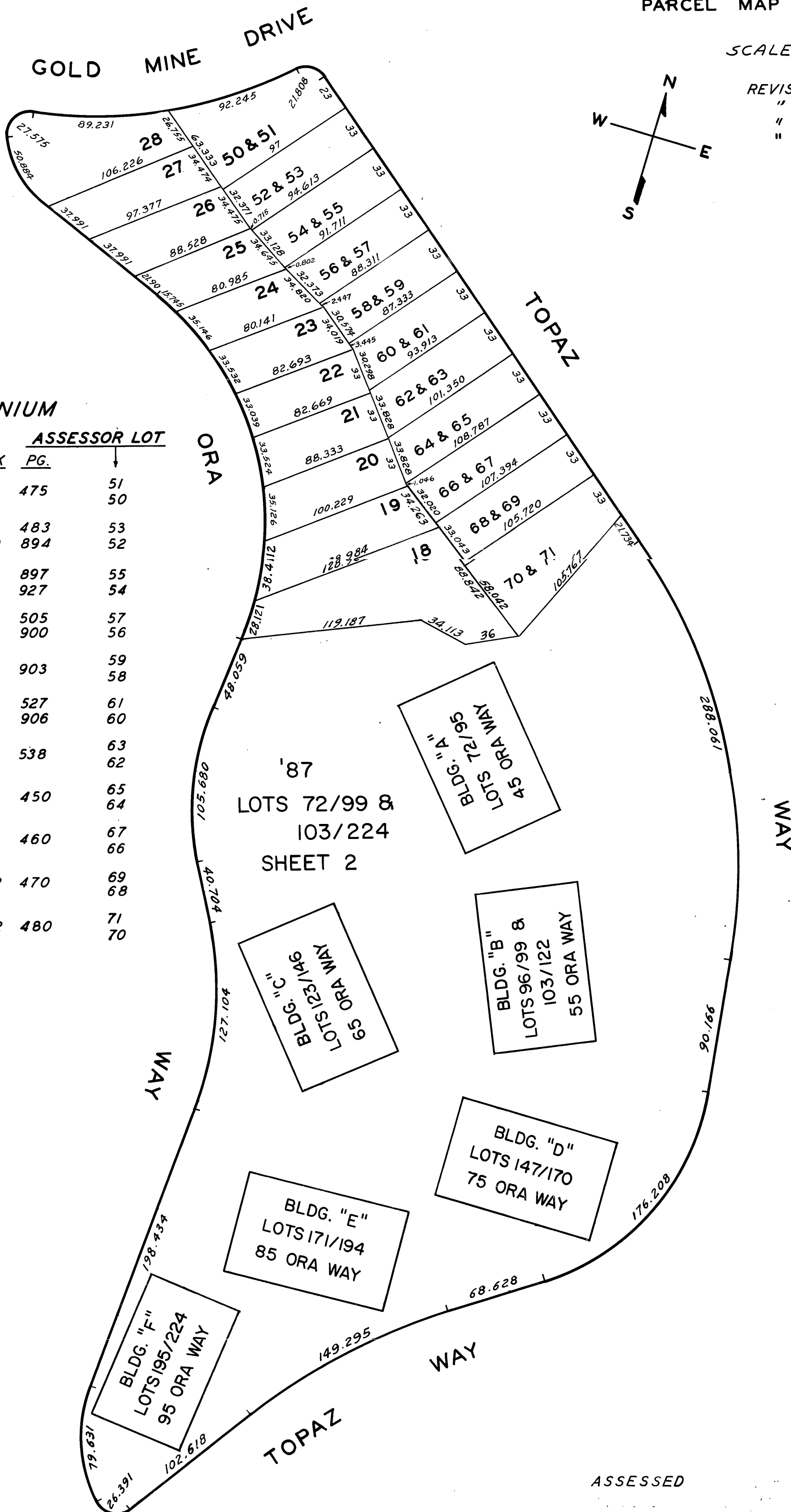
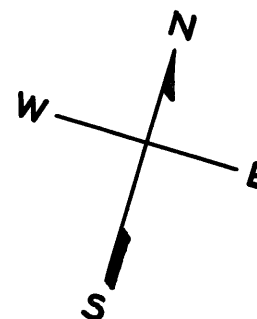


SCALE: 1"=60'

REVISED 1967
" '68
" '69
" '87



CONDOMINIUM

DESCRIPTION		ASSESSOR LOT	
BOOK	PG.		
7531	1 UNIT A > B115	475	51
7531	1 UNIT B > B115	475	50
7531	2 UNIT A > B115	483	53
7531	2 UNIT B > B179	894	52
7531	3 UNIT A > B179	897	55
7531	3 UNIT B > B179	927	54
7531	4 UNIT A > B115	505	57
7531	4 UNIT B > B179	900	56
7531	5 UNIT A > B179	903	59
7531	5 UNIT B > B179	903	58
7531	6 UNIT A > B115	527	61
7531	6 UNIT B > B179	906	60
7531	7 UNIT A > B115	538	63
7531	7 UNIT B > B115	538	62
7531	8 UNIT A > B212	450	65
7531	8 UNIT B > B212	450	64
7531	9 UNIT A > B212	460	67
7531	9 UNIT B > B212	460	66
7531	10 UNIT A > B212	470	69
7531	10 UNIT B > B212	470	68
7531	12 UNIT A > B212	480	71
7531	12 UNIT B > B212	480	70

ASSESSED SQ. FT.
SQ. FT.
BLK. TOTAL 244,008 SQ. FT.

GOLDMINE HILL CONDOMINIUMS

A CONDOMINIUM PROJECT

45 ORA WAY - BLDG."A"

LOT NO.	UNIT	% OF OWNERSHIP
72	101-A	0.498
73	102-A	0.498
74	103-A	0.492
75	104-A	0.492
76	105-A	0.492
77	106-A	0.492
78	107-A	0.498
79	108-A	0.492
80	201-A	0.492
81	202-A	0.498
82	203-A	0.492
83	204-A	0.492
84	205-A	0.492
85	206-A	0.492
86	207-A	0.498
87	208-A	0.492
88	301-A	0.503
89	302-A	0.665
90	303-A	0.492
91	304-A	0.648
92	305-A	0.492
93	306-A	0.648
94	307-A	0.508
95	308-A	0.659

55 ORA WAY - BLDG."B"

LOT NO.	UNIT	% OF OWNERSHIP
96	101-B	0.492
97	102-B	0.498
98	103-B	0.492
99	104-B	0.492
103	105-B	0.492
104	106-B	0.492
105	107-B	0.498
106	108-B	0.498
107	201-B	0.492
108	202-B	0.498
109	203-B	0.492
110	204-B	0.492
111	205-B	0.492
112	206-B	0.492
113	207-B	0.498
114	208-B	0.498
115	301-B	0.503
116	302-B	0.665
117	303-B	0.492
118	304-B	0.648
119	305-B	0.492
120	306-B	0.648
121	307-B	0.503
122	308-B	0.665

65 ORA WAY - BLDG."C"

LOT NO.	UNIT	% OF OWNERSHIP
123	101-C	0.498
124	102-C	0.492
125	103-C	0.492
126	104-C	0.492
127	105-C	0.492
128	106-C	0.492
129	107-C	0.498
130	108-C	0.492
131	201-C	0.498
132	202-C	0.492
133	203-C	0.492
134	204-C	0.492
135	205-C	0.492
136	206-C	0.492
137	207-C	0.498
138	208-C	0.492
139	301-C	0.659
140	302-C	0.508
141	303-C	0.648
142	304-C	0.492
143	305-C	0.648
144	306-C	0.492
145	307-C	0.659
146	308-C	0.508

75 ORA WAY - BLDG."D"

LOT NO.	UNIT	% OF OWNERSHIP
147	101-D	0.498
148	102-D	0.498
149	103-D	0.492
150	104-D	0.492
151	105-D	0.492
152	106-D	0.492
153	107-D	0.498
154	108-D	0.492
155	201-D	0.498
156	202-D	0.498
157	203-D	0.492
158	204-D	0.492
159	205-D	0.492
160	206-D	0.492
161	207-D	0.498
162	208-D	0.492
163	301-D	0.508
164	302-D	0.665
165	303-D	0.492
166	304-D	0.648
167	305-D	0.492
168	306-D	0.648
169	307-D	0.508
170	308-D	0.659

85 ORA WAY - BLDG."E"

LOT NO.	UNIT	% OF OWNERSHIP
171	101-E	0.498
172	102-E	0.498
173	103-E	0.492
174	104-E	0.492
175	105-E	0.492
176	106-E	0.492
177	107-E	0.492
178	108-E	0.498
179	201-E	0.498
180	202-E	0.498
181	203-E	0.492
182	204-E	0.492
183	205-E	0.492
184	206-E	0.492
185	207-E	0.492
186	208-E	0.498
187	301-E	0.508
188	302-E	0.665
189	303-E	0.492
190	304-E	0.648
191	305-E	0.492
192	306-E	0.648
193	307-E	0.502
194	308-E	0.665

95 ORA WAY - BLDG."F"

LOT NO.	UNIT	% OF OWNERSHIP
195	101-F	0.350
196	102-F	0.492
197	103-F	0.298
198	104-F	0.492
199	105-F	0.350
200	106-F	0.492
201	107-F	0.298
202	108-F	0.498
203	109-F	0.350
204	111-F	0.298
205	201-F	0.350
206	202-F	0.492
207	203-F	0.298
208	204-F	0.492
209	205-F	0.350
210	206-F	0.492
211	207-F	0.298
212	208-F	0.498
213	209-F	0.350
214	211-F	0.298
215	301-F	0.361
216	302-F	0.659
217	303-F	0.298
218	304-F	0.648
219	305-F	0.350
220	306-F	0.648
221	307-F	0.298
222	308-F	0.665
223	309-F	0.350
224	311-F	0.310