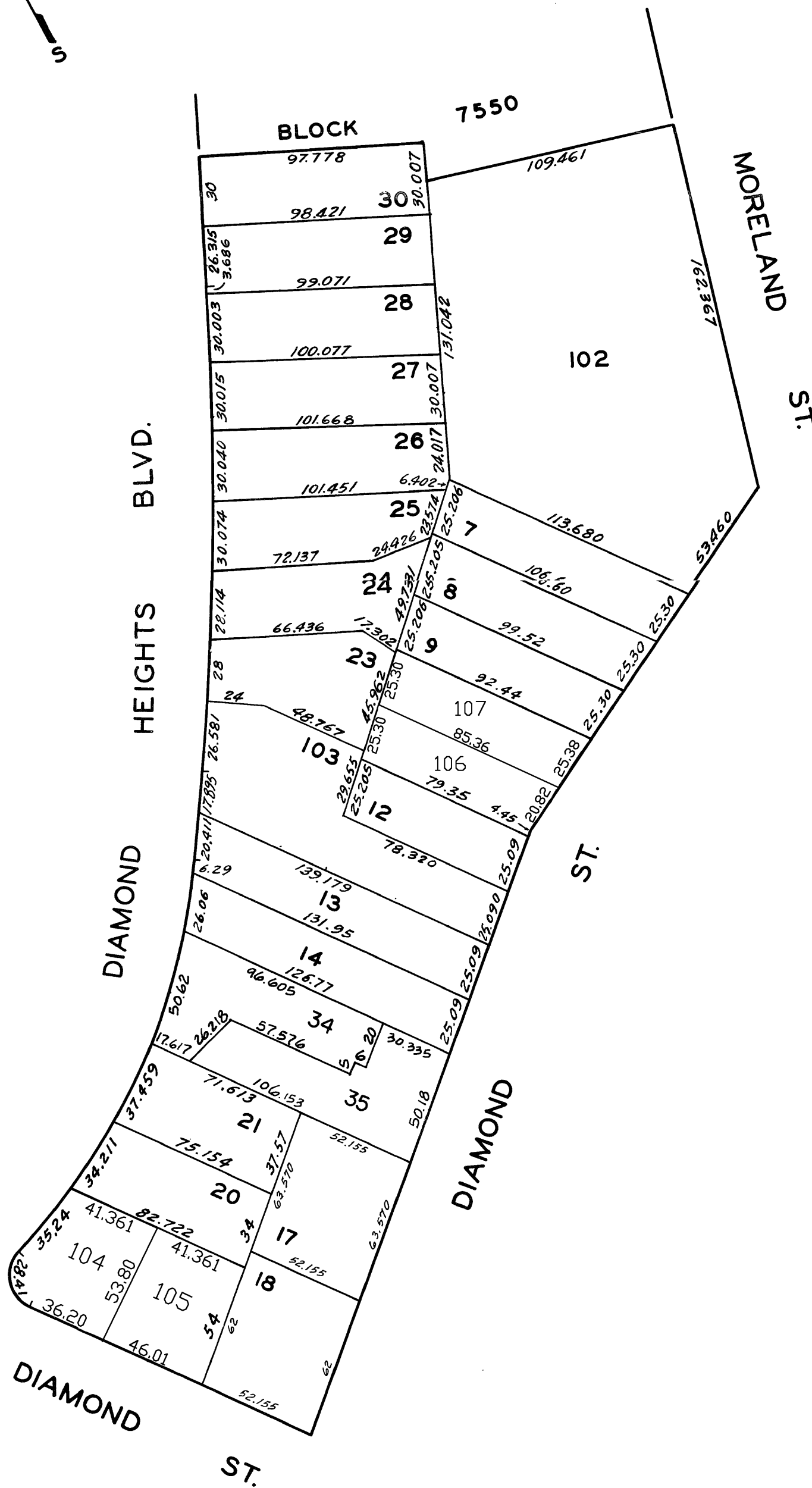
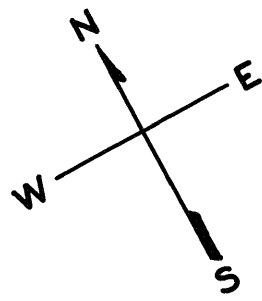


lot19 into lots104&105 for 2003 roll
lot33 into lots106&107 for 2008 roll

7551

DIAMOND HEIGHTS SUB
CASTRO ST. ADDN. & GLEN
PARK TERR. ADDN. BLK. 19

REVISED 1967
" 1968
" 1969
" '70
" '73
" '74
" '89
Revised 2003
Revised 2008



ASSESSED 90,725 SQ. FT.
BLK. TOTAL 90,725 SQ. FT.