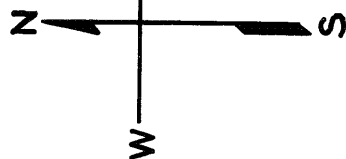
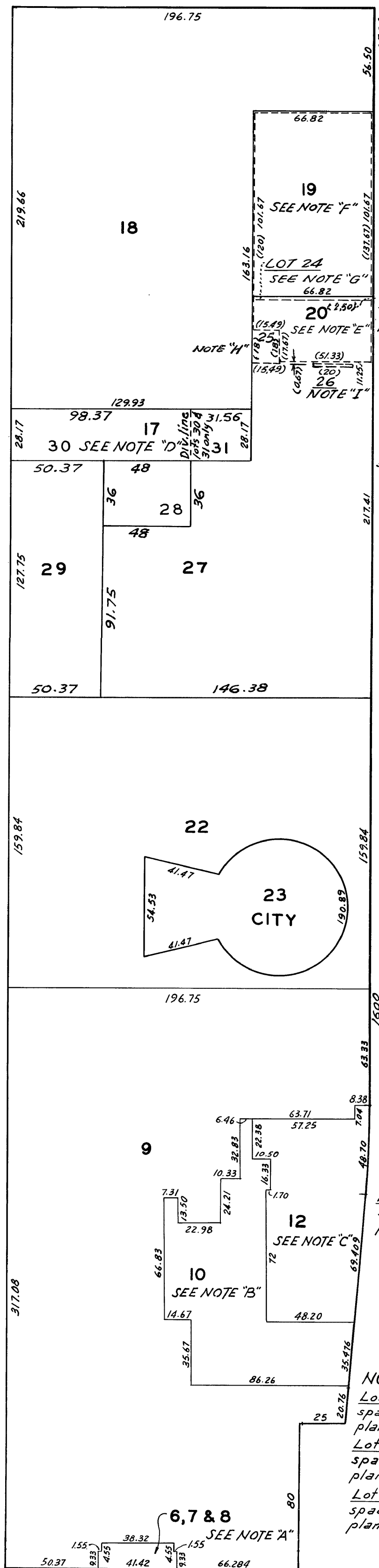


LAGUNA



REVISED '66
REVISED '68
REVISED '70
" '76
" '79
" '83
Revised 2002
Revised 2008

POST



NOTE "F"
Lot 19 comprises all of the space above a horizontal plane at Elev. 158.00'

NOTE "E"
Lot 20 comprises all of the space below a horizontal plane at Elev. 158.00'

NOTE "G"
Lot 24 all of the space between horizontal planes at Elev. 174' & 178'

NOTE "H"
Lot 25 all of the space between Elev. 146' & 157'

NOTE "D":
Lots 30 & 31 comprises all of the space below a horizontal plane at Elev. 154.83'

Lot 17 comprises all of the space above a horizontal plane at Elev. 154.83'

NOTE "I"
Lot 26 all of the space between Elev. 147' & 157'

NOTE "C":
Lot 12 comprises all of the space above a horizontal plane at Elev. 139.83'

NOTE "B":
Lot 10 comprises all of the space above a horizontal plane at Elev. 138.67'

NOTE "A":
Lot 6 comprises all of the space between a horizontal plane at Elev. 141' & 153.33'
Lot 7 comprises all of the space above a horizontal plane at Elev. 153.33'
Lot 8 comprises all of the space below a horizontal plane at Elev. 141'

BLVD.

POST

GEARY

35

CITY

SUBSURFACE RIGHTS

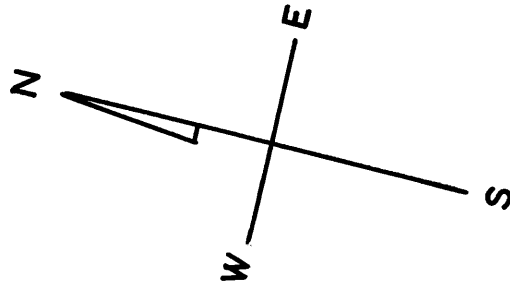
GEARY

BLVD.

WEBSTER

WEBSTER

© COPYRIGHT SAN FRANCISCO
CITY & COUNTY ASSESSOR 1995

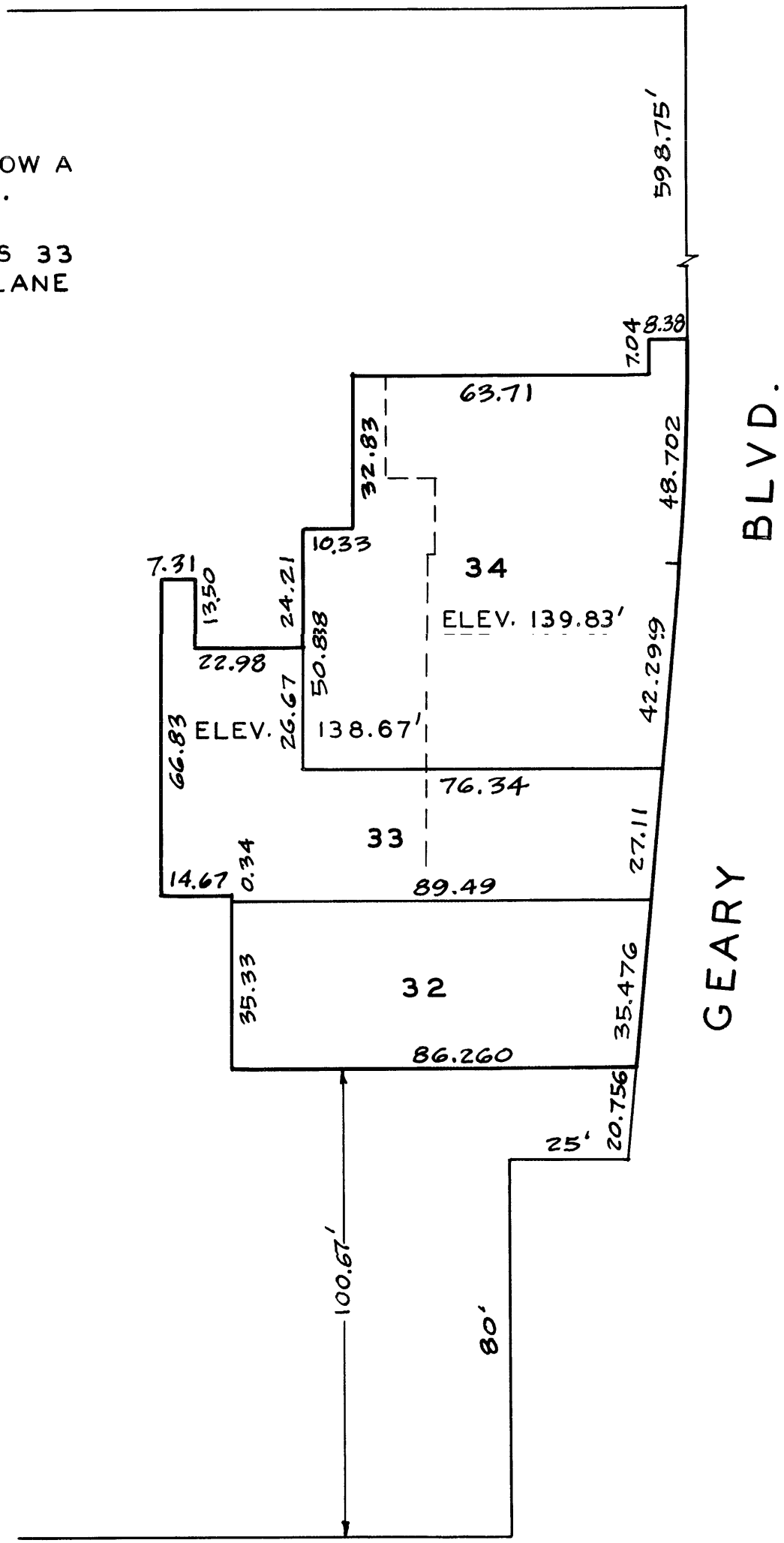


LAGUNA ST.

NOTES

UPPER ELEVATION OF LOT 32 IS BELOW A
HORIZONTAL PLANE AT 138.67 FEET.

UPPER ELEVATIONS OF AREAS OF LOTS 33
AND 34 ARE BELOW A HORIZONTAL PLANE
AT ELEVATIONS SHOWN.



WEBSTER ST.

SCALE : 1 IN. = 30 FEET