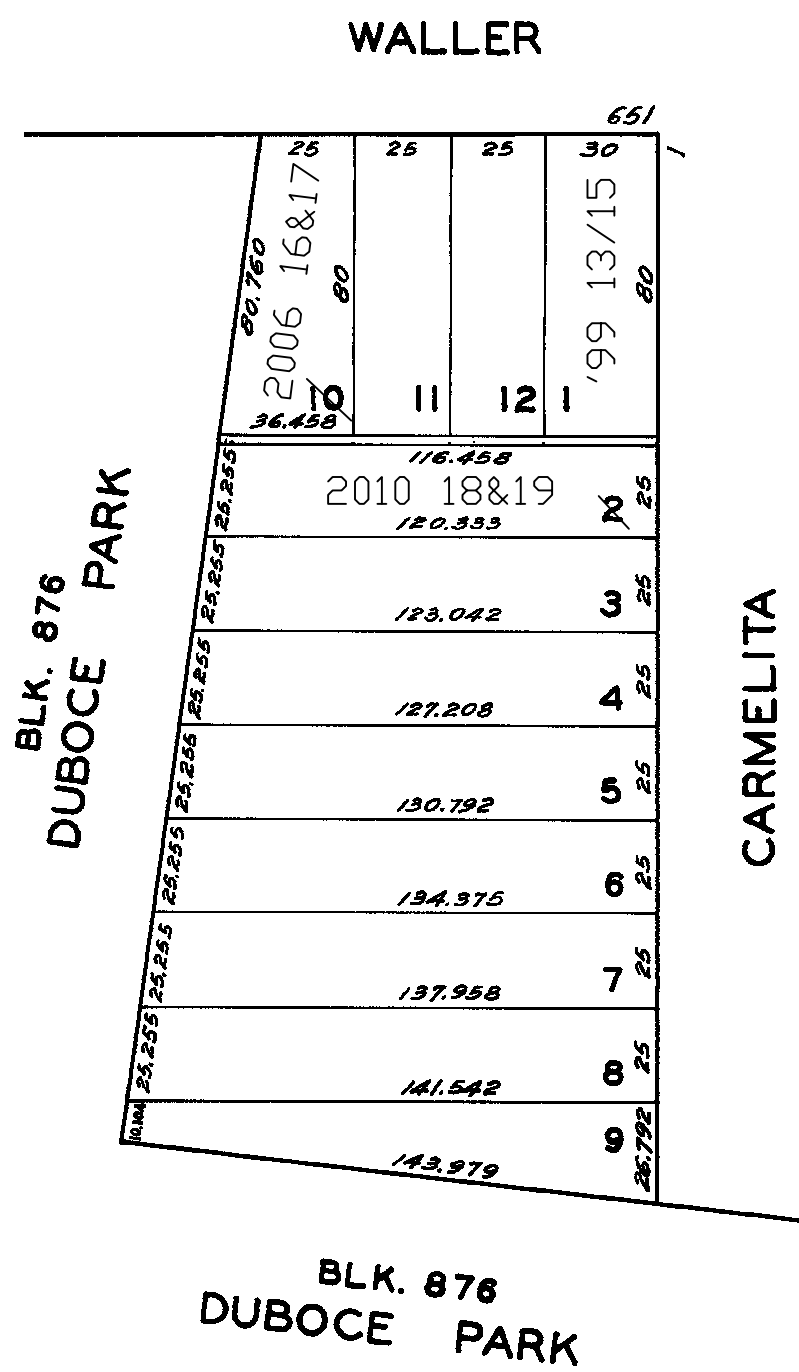
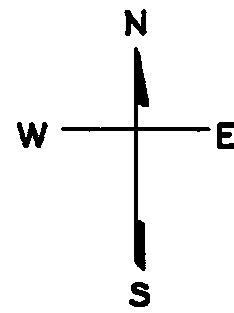


lot 1 into lots 13/15 for 1999 roll
lot10 into lots16&17 for 2006 roll
lot2 into lots18&19 for 2010 roll

Revised '99
Revised 2006
Revised 2010



99 Carmelita St. & 661-663 Waller St.

A CONDOMINIUM		
LOT	UNIT	% COMM. AREA
13	99	32
14	661	33
15	663	35

679-681 WALLER ST.

A CONDOMINIUM		
LOT	UNIT	% COMM. AREA
16	679	65
17	681	35