

# ASSESSOR-RECORDER'S OFFICE

© COPYRIGHT SAN FRANCISCO  
CITY & COUNTY ASSESSOR 1995

# 934

W A BLK. 553

REVISED '63

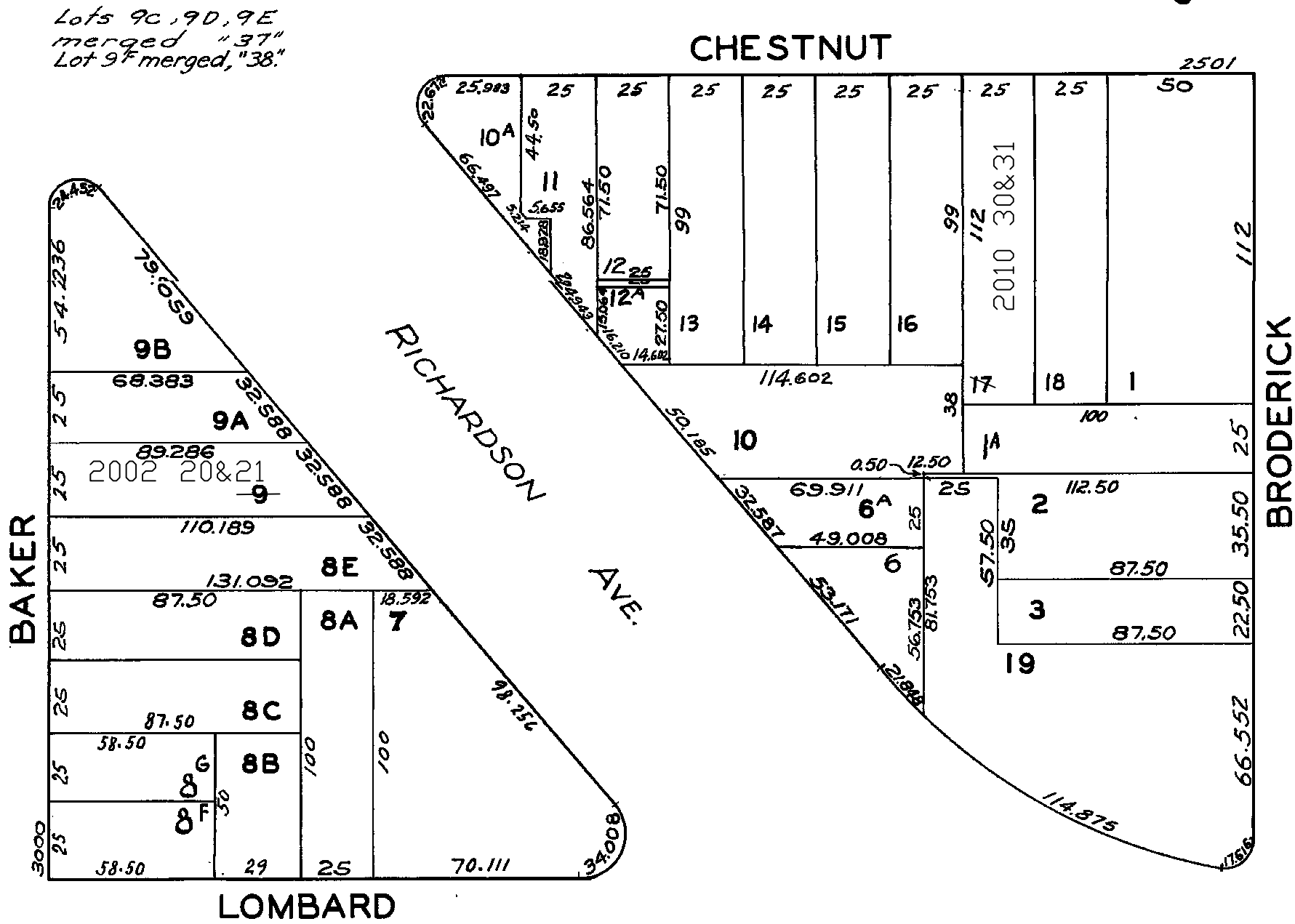
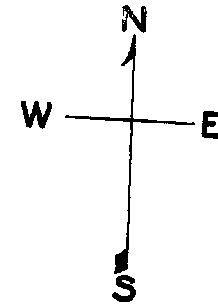
Revised 2002  
Revised 2010

lot9 into lots20&21 for 2002 roll

**LOTS MERGED**

LOTS	INTO LOT	
8	7	"1941"
4A	Richardson Ave	"1938"

lot17 into lots30&31 for 2010 roll



3030-3032 BAKER ST.  
A CONDOMINIUM

LOT	UNIT	% COMM. AREA
20	3030	47.54
21	3032	52.46