

Lot 13 merged into lot 14-44
 " 10 " " 9-'54
 lot12 into lots64/67 for 2012 roll

1235

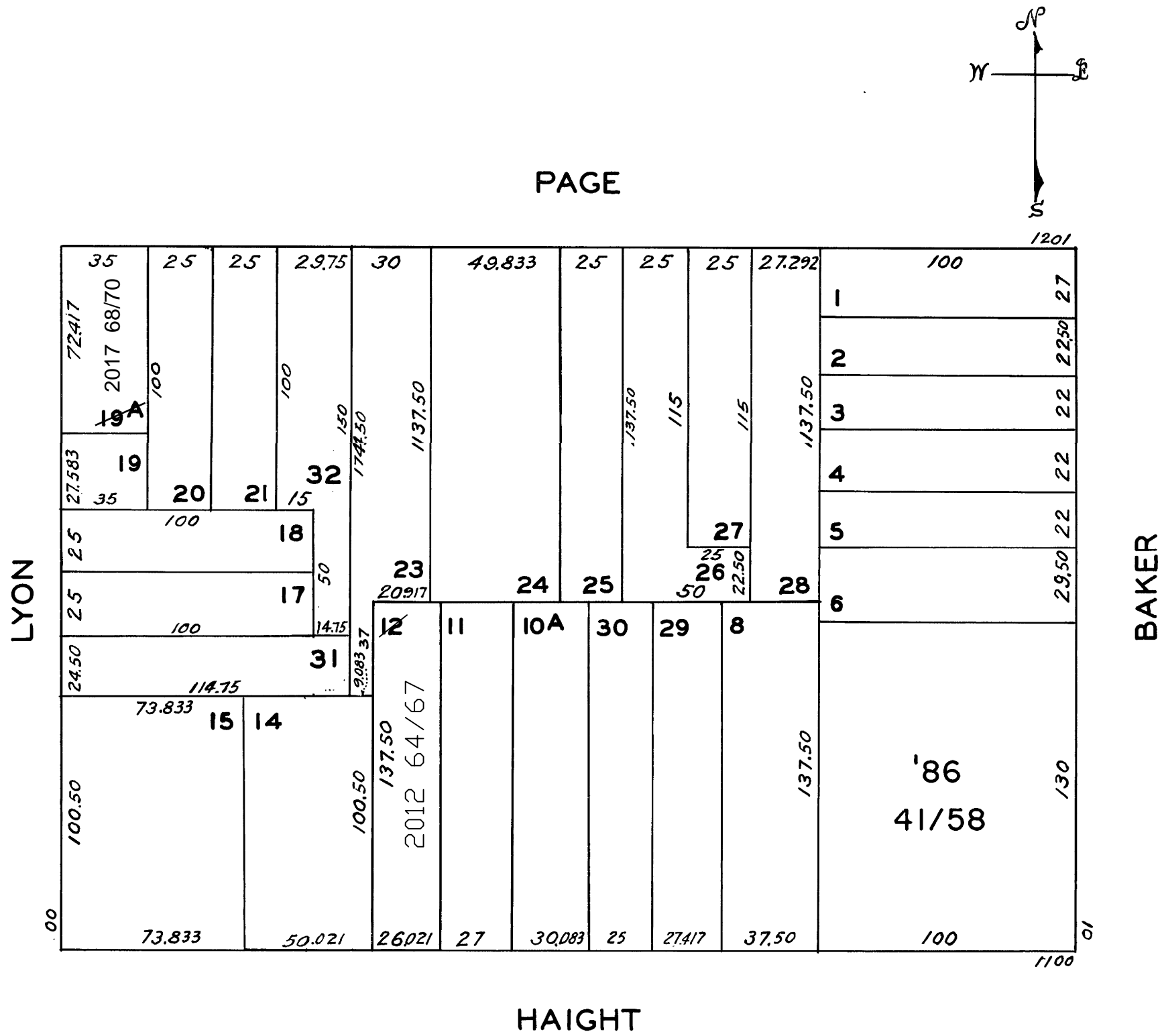
© COPYRIGHT SAN FRANCISCO
 CITY & COUNTY ASSESSOR 1995

W. A. BLK. 598

Lot 19A into lots 68 to 70 for 2017 roll

REVISED '65
 " '74
 " '83
 " '86

Revised 2012
 REVISED 2017



ONE BAKER ST.
A CONDOMINIUM

LOT	UNIT	% COMM. AREA
41	1A	1/18
42	2A	
43	3A	
44	4A	
45	5A	
46	6A	
47	1B	
48	2B	
49	3B	
50	4B	
51	5B	
52	6B	
53	1C	
54	2C	
55	3C	
56	4C	
57	5C	
58	6C	