

street address MARKET / STOCKTON

block number 328

lot number 2

summary 2

building type/use/number of floors C.3

landmark number

RELATIONSHIP WITH SURROUNDING BUILDINGS

PROPOSED FOR FURTHER INVESTIGATION

Relationship of setting to building -2 -1 0 1 2 3 4 5

CORNICE, PARAPET, APPENDAGE

Importance as contribution to a cluster/streetscape -2 -1 0 1 2 3 4 5

Importance of cornice to building design -2 -1 0 1 2 3 4 5

Cornice contribution to streetscape -2 -1 0 1 2 3 4 5

ARCHITECTURAL DESIGN VALUATION

FACADE CONDITION

Facade proportions -2 -1 0 1 2 3 4 5

Physical condition -2 -1 0 1 2 3 4 5

Richness/Excellence of detailing/decoration -2 -1 0 1 2 3 4 5

Paint/Material color -2 -1 0 1 2 3 4 5

Unique visual feature of interest 0 1 2 3 4 5

REMODELING

Example of a rare or unusual style or design 0 1 2 3 4 5

Appropriateness of improvements -2 -1 0 1 2 3 4 5

Overall architectural quality -2 -1 0 1 2 3 4 5

Engle 7-23-76
date

Field Notes

Another remodel job

Review Notes

- Junior League Listing
- text index file
- Northern California Guide
- Other Listing _____

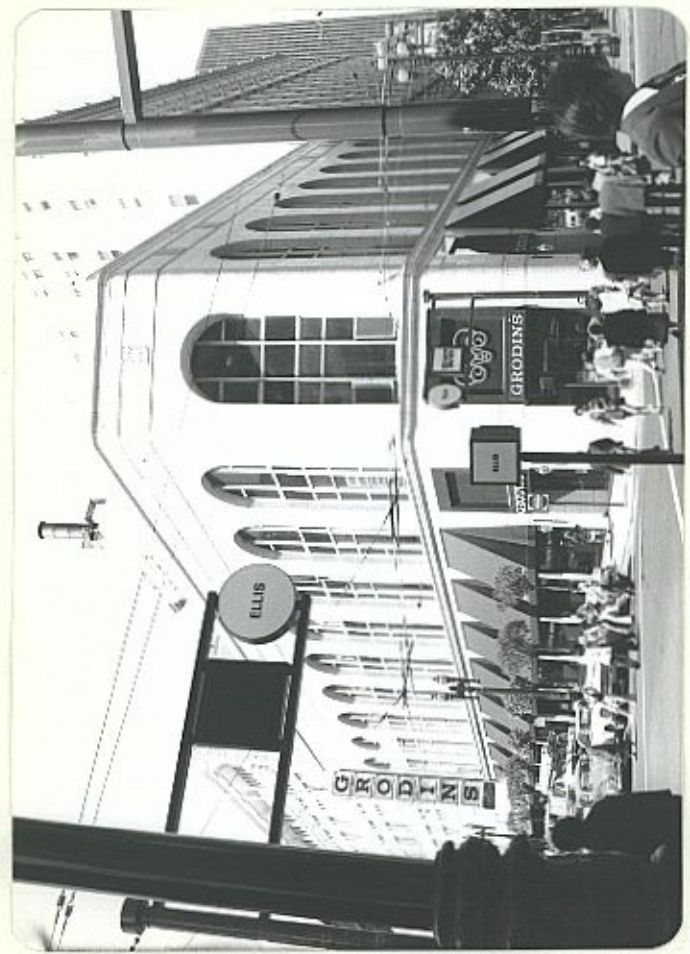


photo 289.22

FI