

2151 SACRAMENTO
street address

639
block number

15
lot number

4
summary

OF 2
building type/use/number of floors

landmark number

RELATIONSHIP WITH SURROUNDING BUILDINGS

Relationship of
setting to building -2 -1 0 1 2 3 4 5

Importance as contribution
to a cluster/streetscape -2 -1 0 1 2 3 4 5

ARCHITECTURAL DESIGN VALUATION

Facade proportions -2 -1 0 1 2 3 4 5

Richness/Excellence
of detailing/decoration -2 -1 0 1 2 3 4 5

Unique visual
feature of interest 0 1 2 3 4 5

Example of a rare or
unusual style or design 0 1 2 3 4 5

Overall architectural
quality -2 -1 0 1 2 3 4 5

☐ PROPOSED FOR FURTHER INVESTIGATION

☐ CORNICE, PARAPET, APPENDAGE

Importance of cornice
to building design -2 -1 0 1 2 3 4 5

Cornice contribution
to streetscape -2 -1 0 1 2 3 4 5

FACADE CONDITION

Physical condition -2 -1 0 1 2 3 4 5

Paint/Material
color -2 -1 0 1 2 3 4 5

☐ REMODELING

Appropriateness
of improvements -2 -1 0 1 2 3 4 5

10/28/75 ARNOLD
date

Field Notes

"BUILT IN 1881, THIS HISTORIC
MANSION WAS ONCE OCCUPIED BY SIR
ARTHUR CONAN DOYLE."

REALLY PLEASANT LITTLE FRENCH
PALACE.

NICE ENTRANCE w/ BAL. CORRESPONDING
TO TOP BAL.
ARCHED WINDOW & BALCONY & BAL.
GOOD BRACKETS, OVERALL DETAIL

Review Notes

Junior League Listing

☐ text ☐ index ☐ file

☐ Northern California Guide

☐ Other Listing

cf. 2402 Steiner, block 606, attrib'd
Willis Polk. Strong urban feeling similar
to this.



photo

90/12

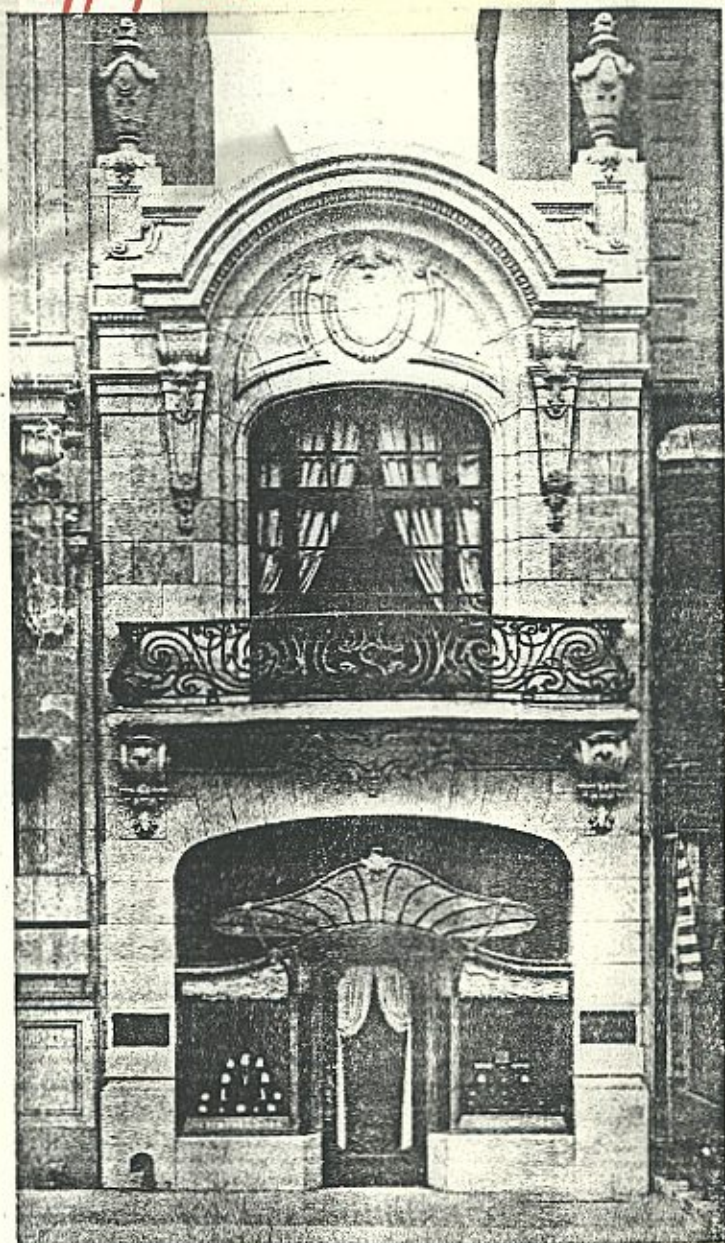
D2

I doubt that the facade in this photo dates from 1881.

Perhaps the bldg was enlarged.

- Obviously a terra cotta facade and not from 1881

pp p. 103



Maynicke & Frank, Architects

PARIS IN NEW YORK—A DIRECT FRENCH BEAUX-ARTS INSPIRATION IN THE DESIGN FOR A FIFTH AVENUE SHOP FRONT

The entire treatment, both in general design and in every detail, is essentially in the style called "Modern French"

From "The Practical Guide of Architecture" by C. M. Black Price, Lippincott & Company Philadelphia & London 1916. Year of construction not given but probably ca 1910.