

180 Townsend

street address

3788  
block number

13  
lot number

P  
summary

C. 3  
building type/use/number of floors

landmark number

RELATIONSHIP WITH SURROUNDING BUILDINGS

Relationship of setting to building -2 -1 0 1 2 3 4 5

Importance as contribution to a cluster/streetscape -2 -1 0 1 2 3 4 5

ARCHITECTURAL DESIGN VALUATION

Facade proportions -2 -1 0 1 2 3 4 5

Richness/Excellence of detailing/decoration -2 -1 0 1 2 3 4 5

Unique visual feature of interest 0 1 2 3 4 5

Example of a rare or unusual style or design 0 1 2 3 4 5

Overall architectural quality -2 -1 0 1 2 3 4 5

PROPOSED FOR FURTHER INVESTIGATION

CORNICE, PARAPET, APPENDAGE  
Importance of cornice to building design -2 -1 0 1 2 3 4 5

Cornice contribution to streetscape -2 -1 0 1 2 3 4 5

FACADE CONDITION

Physical condition -2 -1 0 1 2 3 4 5

Paint/Material color -2 -1 0 1 2 3 4 5

REMODELING

Appropriateness of improvements -2 -1 0 1 2 3 4 5

Engle 7/16  
date

Field Notes

Petrucella  
paint weakens the base  
course

rondels of marble between  
2nd story windows

Review Notes

Junior League Listing

- text  index  file
- Northern California Guide
- Other Listing \_\_\_\_\_

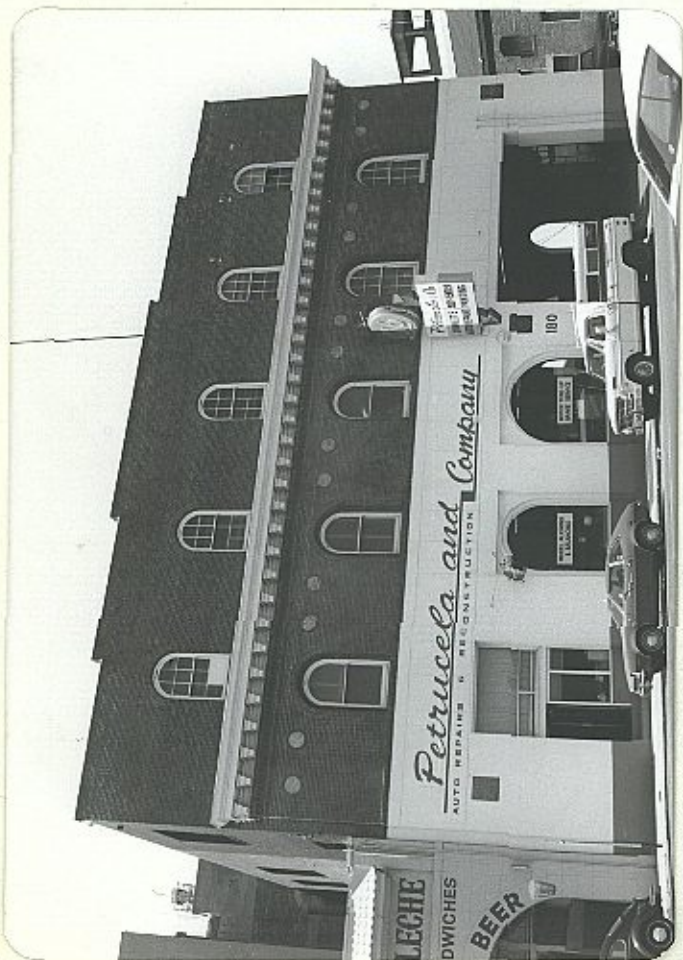


photo 292, 9

D6

Column

180 Townsend 3788  
Address Block Lot

REVIEW PANEL NOTES

SETTING

-2 -1 0 1 2 3 4 5

CLUSTER/STREETSCAPE

-2 -1 0 1 2 3 4 5

FACADE PROPORTIONS

-2 -1 0 1 2 3 4 5

DETAILING/DECORATION

-2 -1 0 1 2 3 4 5

UNIQUE FEATURES

0 1 2 3 4 5

RARE STYLE/DESIGN

0 1 2 3 4 5

OVERALL ARCHITECTURAL QUALITY

-2 -1 0 1 2 3 4 5

SUMMARY 2

STYLE

ARCHITECT  
DESIGNER  
BUILDER

APPROXIMATE DATE



SEE BACK FOR COMMENTS

