

2700 19TH. ST. (RAY GUARDIAN) 4023 4 2
 street address block number lot number summary

OF-com/2
 building type/use/number of floors landmark number

RELATIONSHIP WITH SURROUNDING BUILDINGS

Relationship of setting to building -2 -1 0 1 2 3 4 5
 Importance as contribution to a cluster/streetscape -2 -1 0 1 2 3 4 5

ARCHITECTURAL DESIGN VALUATION

Facade proportions -2 -1 0 1 2 3 4 5
 Richness/Excellence of detailing/decoration -2 -1 0 1 2 3 4 5
 Unique visual feature of interest 0 1 2 3 4 5
 Example of a rare or unusual style or design 0 1 2 3 4 5
 Overall architectural quality -2 -1 0 1 2 3 4 5

PROPOSED FOR FURTHER INVESTIGATION

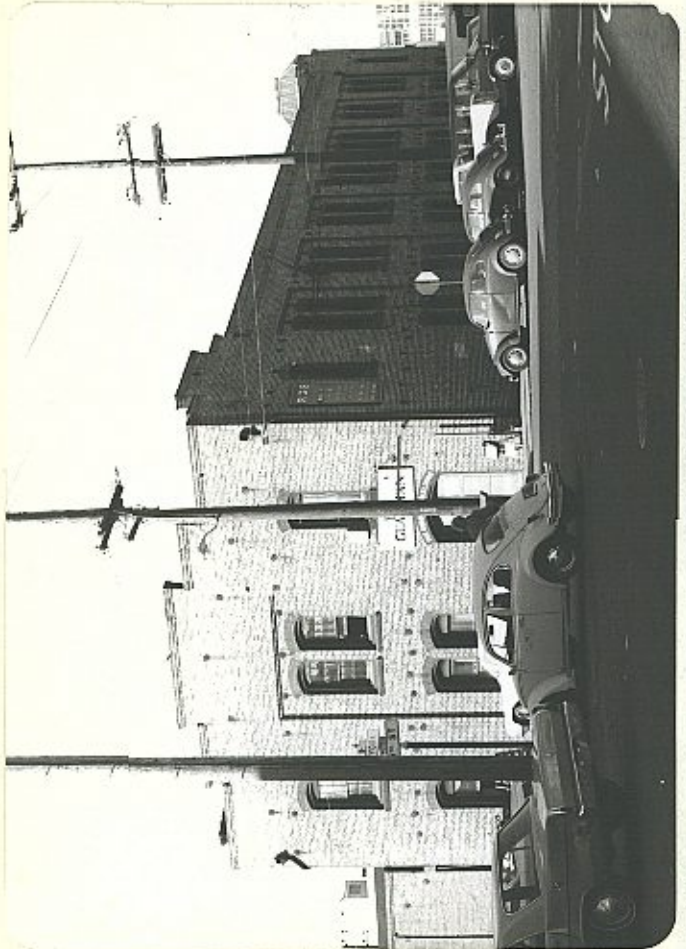
CORNICE, PARAPET, APPENDAGE
 Importance of cornice to building design -2 -1 0 1 2 3 4 5
 Cornice contribution to streetscape -2 -1 0 1 2 3 4 5

FACADE CONDITION
 Physical condition -2 -1 0 1 2 3 4 5
 Paint/Material color -2 -1 0 1 2 3 4 5

REMODELING
 Appropriateness of improvements -2 -1 0 1 2 3 4 5

1/21/76 ARNOLD
 date

Field Notes



Review Notes

Junior League Listing
 text index file
 Northern California Guide
 Other Listing _____

photo 158/3

51

Comm

2700 19th

4022

Address

Block

Lot

REVIEW PANEL NOTES

SETTING

-2 -1 0 1 2 3 4 5

CLUSTER/STREETScape

-2 -1 0 1 2 3 4 5

FACADE PROPORTIONS

-2 -1 0 1 2 3 4 5

DETAILING/DECORATION

-2 -1 0 1 2 3 4 5

UNIQUE FEATURES

0 1 2 3 4 5

RARE STYLE/DESIGN

0 1 2 3 4 5

OVERALL ARCHITECTURAL QUALITY

-2 -1 0 1 2 3 4 5

SUMMARY

STYLE

ARCHITECT
DESIGNER
BUILDER

APPROXIMATE DATE

SEE BACK FOR COMMENTS

an exceptionally well proportioned
and simply ~~fr~~ detailed
warehouse type bldg.