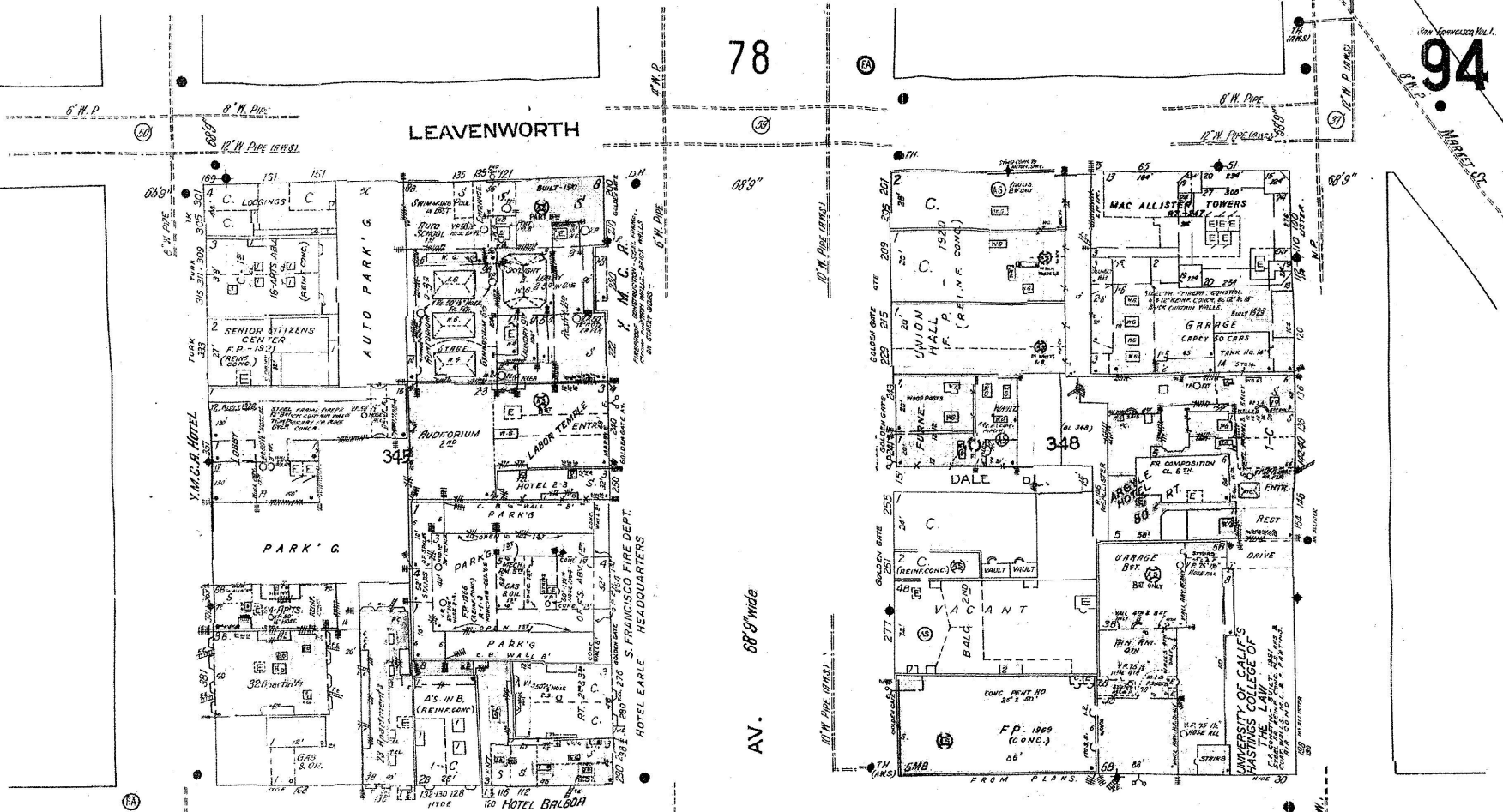


78

94

LEAVENWORTH



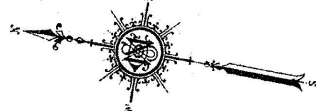
AV. 68'9" wide

68'9" wide

93

HYDE

95

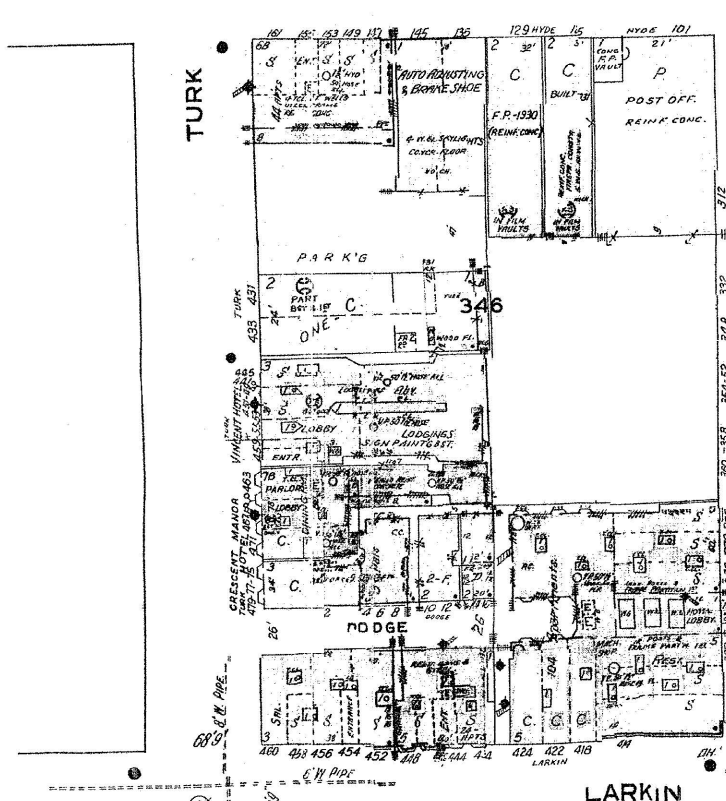


GOLDEN GATE

68'9"

109

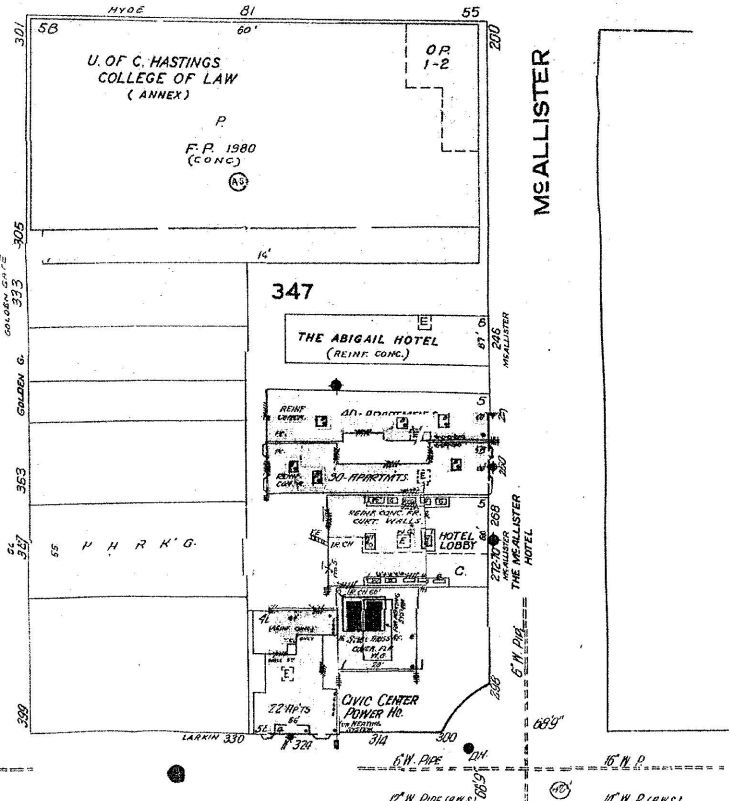
TURK



LARKIN

Scale of feet. 0 50 100 150

Copyright 1949 by the Sanborn Map Co.



MEALLISTER

347

THE ABIGAIL HOTEL (REINF. CONC.)

CIVIC CENTER POWER HO.